



SZABO SCANDIC

Part of Europa Biosite

Produktinformation



Forschungsprodukte & Biochemikalien



Zellkultur & Verbrauchsmaterial



Diagnostik & molekulare Diagnostik



Laborgeräte & Service

Weitere Information auf den folgenden Seiten!
See the following pages for more information!



Lieferung & Zahlungsart

siehe unsere [Liefer- und Versandbedingungen](#)

Zuschläge

- Mindermengenzuschlag
- Trockeneiszuschlag
- Gefahrgutzuschlag
- Expressversand

SZABO-SCANDIC HandelsgmbH

Quellenstraße 110, A-1100 Wien

T. +43(0)1 489 3961-0

F. +43(0)1 489 3961-7

mail@szabo-scandic.com

www.szabo-scandic.com

[linkedin.com/company/szaboscandic](https://www.linkedin.com/company/szaboscandic)

REG1A monoclonal antibody (M17), clone 5F8

Catalog # : H00005967-M17

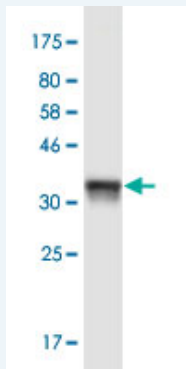
規格 : [100 ug]

[List All](#)

Specification

Product Description:	Mouse monoclonal antibody raised against a partial recombinant REG1A.
Immunogen:	REG1A (AAH05350.1, 23 a.a. ~ 122 a.a) partial recombinant protein with GST tag. MW of the GST tag alone is 26 KDa.
Sequence:	QEAQTQLPQARISCPEGTNAYRSYCYFNEDRETWVDADLYCQNMMSG NLVSVLTQAEGAFVASLIKESGTDDFNWIGLHDPKKNRRWHWSSGSLV SYK
Host:	Mouse
Reactivity:	Human
Isotype:	IgG2a Kappa

Quality Control Testing: Antibody Reactive Against Recombinant Protein.



Western Blot detection against Immunogen (36.63 KDa) .


Storage Buffer: In 1x PBS, pH 7.4

Storage Instruction: Store at -20°C or lower. Aliquot to avoid repeated freezing and thawing.

Datasheet:  [Download](#)

Applications

Western Blot (Recombinant protein)

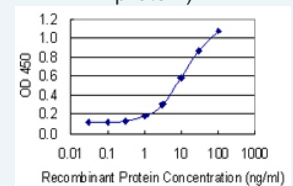
 [Protocol Download](#)

Sandwich ELISA (Recombinant protein)

Application Image

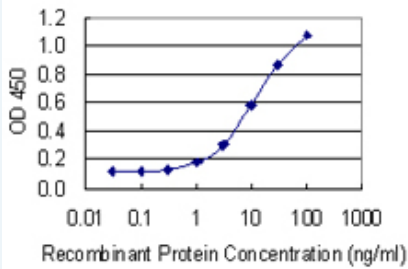
Western Blot (Recombinant protein)

Sandwich ELISA (Recombinant protein)




 [enlarge](#)

ELISA



Detection limit for recombinant GST tagged REG1A is 0.3 ng/ml as a capture antibody.

 [Protocol Download](#)

ELISA

Gene Information

Entrez GeneID: [5967](#)

GeneBank [BC005350.2](#)

Accession#:

Protein [AAH05350.1](#)

Accession#:

Gene Name: REG1A

Gene Alias: ICRF,MGC12447,P19,PSP,PSPS,PSPS1,PTP,REG

Gene Description: regenerating islet-derived 1 alpha

Omim ID: [167770](#)

Gene Ontology: [Hyperlink](#)

Gene Summary: This gene is a type I subclass member of the Reg gene family. The Reg gene family is a multigene family grouped into four subclasses, types I, II, III and IV, based on the primary structures of the encoded proteins. This gene encodes a protein that is secreted by the exocrine pancreas. It is associated with islet cell regeneration and diabetogenesis and may be involved in pancreatic lithogenesis. Reg family members REG1B, REGL, PAP and this gene are tandemly clustered on chromosome 2p12 and may have arisen from the same ancestral gene by gene duplication. [provided by RefSeq]

Other Designations: OTTHUMP00000160485,islet cells regeneration factor,islet of langerhans regenerating protein,lithostathine 1 alpha,pancreatic stone protein, secretory,pancreatic thread protein,protein-X,regenerating islet-derived 1 alpha (pancreatic stone protein, pancrea

Related Disease

[Calcinosis](#) [Diabetes Mellitus, Type 1](#) [Diabetes Mellitus, Type 2](#) [Pancreatitis](#) [Tobacco Use Disorder](#)