



SZABO SCANDIC

Part of Europa Biosite

Produktinformation



Forschungsprodukte & Biochemikalien



Zellkultur & Verbrauchsmaterial



Diagnostik & molekulare Diagnostik



Laborgeräte & Service

Weitere Information auf den folgenden Seiten!
See the following pages for more information!



Lieferung & Zahlungsart

siehe unsere [Liefer- und Versandbedingungen](#)

Zuschläge

- Mindermengenzuschlag
- Trockeneiszuschlag
- Gefahrgutzuschlag
- Expressversand

SZABO-SCANDIC HandelsgmbH

Quellenstraße 110, A-1100 Wien

T. +43(0)1 489 3961-0

F. +43(0)1 489 3961-7

mail@szabo-scandic.com

www.szabo-scandic.com

[linkedin.com/company/szaboscandic](https://www.linkedin.com/company/szaboscandic) 

RELA monoclonal antibody (M01), clone 8G3

Catalog # : H00005970-M01

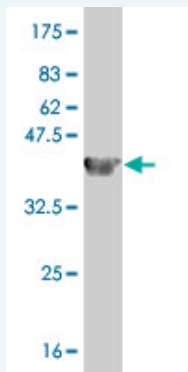
規格 : [100 ug]

[List All](#)

Specification

Product Description:	Mouse monoclonal antibody raised against a partial recombinant RELA.
Immunogen:	RELA (NP_068810, 432 a.a. ~ 505 a.a) partial recombinant protein with GST tag. MW of the GST tag alone is 26 KDa.
Sequence:	GEGTLSEALLQLQFDDLEDL GALLGNSTDPVFTDLASVDNSEFQQLLN QGIPVAPHTTEPMLMEYPEAIRLVT
Host:	Mouse
Reactivity:	Human
Isotype:	IgG1 Lambda

Quality Control Testing: Antibody Reactive Against Recombinant Protein.



Western Blot detection against Immunogen (33.88 KDa) .

Storage Buffer: In 1x PBS, pH 7.4

Storage Instruction: Store at -20°C or lower. Aliquot to avoid repeated freezing and thawing.

MSDS: [Download](#)

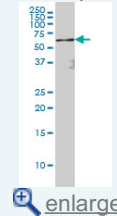
Datasheet: [Download](#)

Applications

Western Blot (Cell lysate)

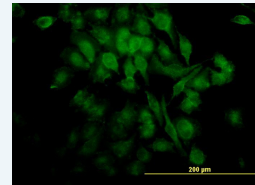
Application Image

Western Blot (Cell lysate)

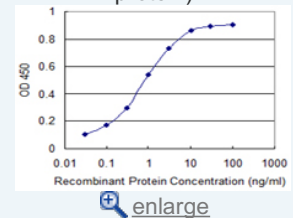


Western Blot (Recombinant protein)

Immunofluorescence

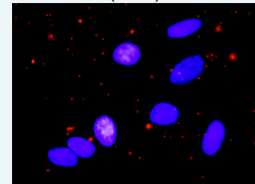


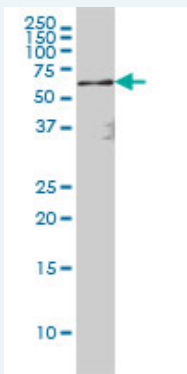
Sandwich ELISA (Recombinant protein)



ELISA

In situ Proximity Ligation Assay (Cell)





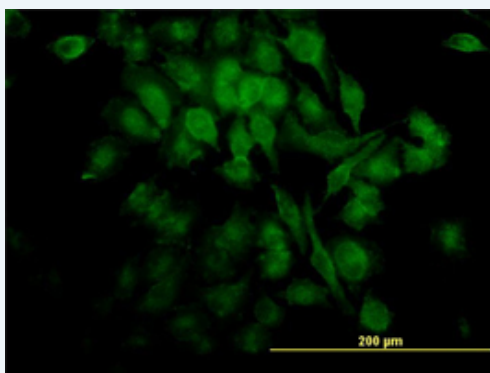
RELA monoclonal antibody (M01), clone 8G3 Western Blot analysis of RELA expression in HeLa S3 NE (Cat # L013V3).

[Protocol Download](#)

Western Blot (Recombinant protein)

[Protocol Download](#)

Immunofluorescence

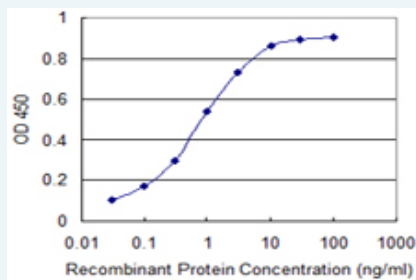


[enlarge this image](#)

Immunofluorescence of monoclonal antibody to RELA on HeLa cell. [antibody concentration 35 ug/ml]

[Protocol Download](#)

Sandwich ELISA (Recombinant protein)

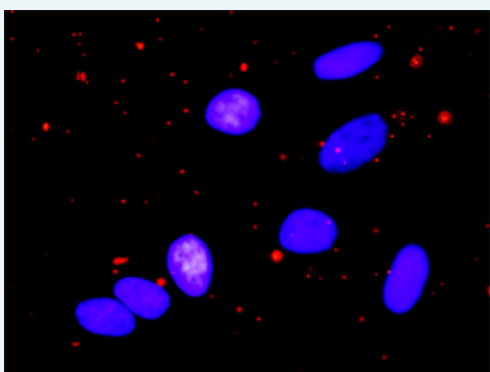


Detection limit for recombinant GST tagged RELA is 0.03 ng/ml as a capture antibody.

[Protocol Download](#)

ELISA

In situ Proximity Ligation Assay (Cell)



Proximity Ligation Analysis of protein-protein interactions between IKKB and RELA. HeLa

cells were stained with anti-IKBKB rabbit purified polyclonal 1:1200 and anti-RELA mouse monoclonal antibody 1:50. Each red dot represents the detection of protein-protein interaction complex, and nuclei were counterstained with DAPI (blue).

Gene Information

Entrez GeneID: [5970](#)

GeneBank Accession#: [NM_021975](#)

Protein Accession#: [NP_068810](#)

Gene Name: RELA

Gene Alias: MGC131774,NFKB3,p65

Gene Description: v-rel reticuloendotheliosis viral oncogene homolog A (avian)

Omim ID: [164014](#)

Gene Ontology: [Hyperlink](#)

Gene Summary: NFKB1 (MIM 164011) or NFKB2 (MIM 164012) is bound to REL (MIM 164910), RELA, or RELB (MIM 604758) to form the NFKB complex. The p50 (NFKB1)/p65 (RELA) heterodimer is the most abundant form of NFKB. The NFKB complex is inhibited by I-kappa-B proteins (NFKBIA, MIM 164008 or NFKBIB, MIM 604495), which inactivate NFKB by trapping it in the cytoplasm. Phosphorylation of serine residues on the I-kappa-B proteins by kinases (IKBKA, MIM 600664, or IKBKB, MIM 603258) marks them for destruction via the ubiquitination pathway, thereby allowing activation of the NFKB complex. Activated NFKB complex translocates into the nucleus and binds DNA at kappa-B-binding motifs such as 5-prime GGGRNNYYCC 3-prime or 5-prime HGGARNYYCC 3-prime (where H is A, C, or T; R is an A or G purine; and Y is a C or T pyrimidine).[supplied by OMIM]

Other Designations: nuclear factor of kappa light polypeptide gene enhancer in B-cells 3,v-rel avian reticuloendotheliosis viral oncogene homolog A (nuclear factor of kappa light polypeptide gene enhancer in B-cells 3 (p65)),v-rel reticuloendotheliosis viral oncogene homolog

Gene Pathway

[Acute myeloid leukemia](#) [Adipocytokine signaling pathway](#) [Apoptosis](#)
[B cell receptor signaling pathway](#) [Chemokine signaling pathway](#) [Chronic myeloid leukemia](#)
[Epithelial cell signaling in Helicobacter pylori infection](#) [MAPK signaling pathway](#)
[Neurotrophin signaling pathway](#) [Pancreatic cancer](#) [Pathways in cancer](#) [Prostate cancer](#)
[Small cell lung cancer](#) [T cell receptor signaling pathway](#)
[Toll-like receptor signaling pathway](#)

Related Disease

[Arthritis](#) [Rheumatoid](#) [Breast cancer](#) [Breast Neoplasms](#) [Cardiovascular Diseases](#)
[Diabetes Mellitus](#) [Type 2 Disease Progression](#) [Disease Susceptibility](#) [Edema](#)
[Genetic Predisposition to Disease](#) [Hematologic Diseases](#) [HIV Infections](#) [Hodgkin Disease](#)
[Liver Cirrhosis](#) [Lymphoproliferative Disorders](#) [Multiple Myeloma](#) [Occupational Diseases](#)
[Testicular Neoplasms](#) [Waldenstrom Macroglobulinemia](#) [Werner syndrome](#)