



SZABO SCANDIC

Part of Europa Biosite

Produktinformation



Forschungsprodukte & Biochemikalien



Zellkultur & Verbrauchsmaterial



Diagnostik & molekulare Diagnostik



Laborgeräte & Service

Weitere Information auf den folgenden Seiten!
See the following pages for more information!



Lieferung & Zahlungsart

siehe unsere [Liefer- und Versandbedingungen](#)

Zuschläge

- Mindermengenzuschlag
- Trockeneiszuschlag
- Gefahrgutzuschlag
- Expressversand

SZABO-SCANDIC HandelsgmbH

Quellenstraße 110, A-1100 Wien

T. +43(0)1 489 3961-0

F. +43(0)1 489 3961-7

mail@szabo-scandic.com

www.szabo-scandic.com

[linkedin.com/company/szaboscandic](https://www.linkedin.com/company/szaboscandic) 

RELB purified MaxPab rabbit polyclonal antibody (D01P) MaxPab®

Catalog # : H00005971-D01P

規格 : [100 ug]

[List All](#)

Specification

Product Description: Rabbit polyclonal antibody raised against a full-length human RELB protein.

Immunogen: RELB (NP_006500.2, 1 a.a. ~ 579 a.a) full-length human protein.

Sequence:
 MLRSGPASGPSVPTGRAMPSRRVARPPAAPELGALGSPDLSSLSLAVS
 RSTDELEIIDEYIKENGFGLDGGQPGPGEGLPRLVSRGAASLSTVTLGPV
 APPATPPPWGCPLGRLVSPAPGPGQPPLVITEQPKQRMRFRYECEG
 RSAGSILGESSTEASKTLPAIELRDCGGLREVEVTAQLVWKDWPHRVHP
 HSLVGKDCTDGICRVRLRPHVSPRHSFNNLGIQCVRKKEIEAAIERKIQLGI
 DPYNAGSLKNHQEVDMMVVRICFQASYRDQQGQMRRMDPVLSEPVYDK
 KSTNTSELRICRINKESGPCTGGEELYLLCDKVQKEDISVVSASWEGR
 ADFSQADVHRQIAIVFKTPPYEDLEIVEPVTVMVFLQRLTDGVCSEPLPFT
 YLPRDHDSYGVDKKRKRGMVDLGEINSSDPHGIESKRRKKKPAILDHFL
 PNHGSGPFLPPSALLPDPDFSGTVSLPGLEPPGGPDLLDDGFAYDPTA
 PTLFTMLDLLPPAPPASAVVCSGGAGAVVGETPGPEPLTLDYQAPGP
 GDGGTASLVGSNMFPNHYREAAFGGLLSPGPEAT

Host: Rabbit

Reactivity: Human

Quality Control Testing: Antibody reactive against mammalian transfected lysate.

Storage Buffer: In 1x PBS, pH 7.4

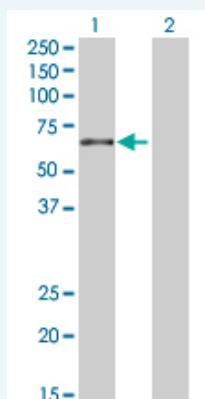
Storage Instruction: Store at -20°C or lower. Aliquot to avoid repeated freezing and thawing.

MSDS:  [Download](#)

Datasheet:  [Download](#)

Applications

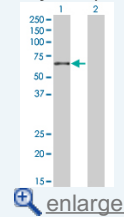
Western Blot (Transfected lysate)



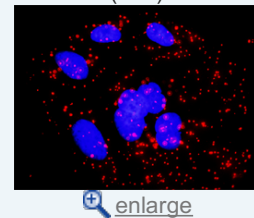
Western Blot analysis of RELB expression in transfected 293T cell line ([H00005971-T02](#)) by RELB MaxPab polyclonal antibody.

Application Image

Western Blot (Transfected lysate)



In situ Proximity Ligation Assay (Cell)

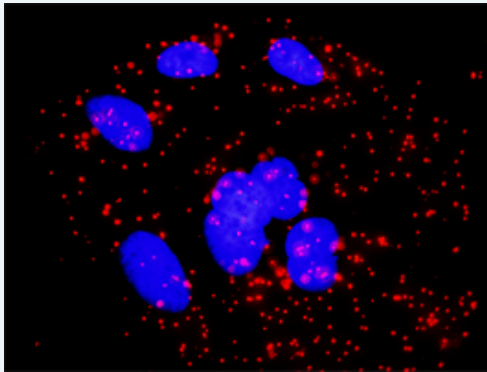


 enlarge

Lane 1: RELB transfected lysate(62.10 kDa).
Lane 2: Non-transfected lysate.

 [Protocol Download](#)

***In situ* Proximity Ligation Assay (Cell)**



Proximity Ligation Analysis of protein-protein interactions between RELB and RELA. HeLa cells were stained with anti-RELB rabbit purified polyclonal 1:1200 and anti-RELA mouse monoclonal antibody 1:50. Each red dot represents the detection of protein-protein interaction complex, and nuclei were counterstained with DAPI (blue).

Gene Information

Entrez GeneID: [5971](#)

GeneBank Accession#: [NM_006509.2](#)

Protein Accession#: [NP_006500.2](#)

Gene Name: RELB

Gene Alias: I-REL, IREL

Gene Description: v-rel reticuloendotheliosis viral oncogene homolog B

Omim ID: [604758](#)

Gene Ontology: [Hyperlink](#)

Other Designations: reticuloendotheliosis viral oncogene homolog B, v-rel avian reticuloendotheliosis viral oncogene homolog B (nuclear factor of kappa light polypeptide gene enhancer in B-cells 3), v-rel reticuloendotheliosis viral oncogene homolog B, nuclear factor of kappa

Gene Pathway

[MAPK signaling pathway](#)

Related Disease

[Arthritis, Rheumatoid](#) [Cardiovascular Diseases](#) [Diabetes Mellitus, Type 2](#) [Disease Susceptibility](#) [Edema](#) [Genetic Predisposition to Disease](#) [Hematologic Diseases](#) [Hodgkin Disease](#) [Lymphoproliferative Disorders](#) [Multiple Myeloma](#) [Occupational Diseases](#) [Waldenstrom Macroglobulinemia](#) [Werner syndrome](#)