



SZABO SCANDIC

Part of Europa Biosite

Produktinformation



Forschungsprodukte & Biochemikalien



Zellkultur & Verbrauchsmaterial



Diagnostik & molekulare Diagnostik



Laborgeräte & Service

Weitere Information auf den folgenden Seiten!
See the following pages for more information!



Lieferung & Zahlungsart

siehe unsere [Liefer- und Versandbedingungen](#)

Zuschläge

- Mindermengenzuschlag
- Trockeneiszuschlag
- Gefahrgutzuschlag
- Expressversand

SZABO-SCANDIC HandelsgmbH

Quellenstraße 110, A-1100 Wien

T. +43(0)1 489 3961-0

F. +43(0)1 489 3961-7

mail@szabo-scandic.com

www.szabo-scandic.com

[linkedin.com/company/szaboscandic](https://www.linkedin.com/company/szaboscandic)

REN monoclonal antibody (M01), clone 2H2

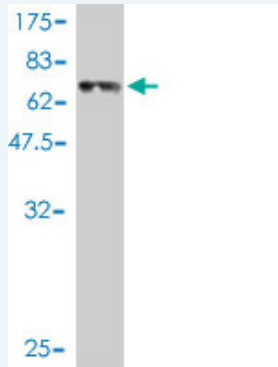
Catalog # : H00005972-M01

規格 : [100 ug]

[List All](#)

Specification

Product Description:	Mouse monoclonal antibody raised against a full length recombinant REN.
Immunogen:	REN (AAH47752, 24 a.a. ~ 406 a.a) full-length recombinant protein with GST tag. MW of the GST tag alone is 26 KDa.
Sequence:	LPTDTTTFKRIFLKRMPISRESLKERGVDMARLGPEWSQPMKRLTLGNT TSSVILTNYMDTQYYGEIGTTPPQTFKVVFDGSSMWWPSSKCSRLYT ACVYHKLFDASDSSSYKHNGTELTRYSTGTVSGFLSQDIITVGGITVTQ MFGVTEMPALPFMLAEFDGVMGMGFIQAIGRVTPIFDNISQGVLKEDV FSFYNRDSENSQSLGGQMLGGSDPQHYEGNFHYINLIKTGVWQIQMK GVSVGSSTLLCEDGCLALVDTGASYISGSTSSIEKLMEALGAKKRLFDYV VKNEGPTLPDISFHLGGKEYTLTADYVVFQESYSSKKLCTLAIHAMDIPP PTGPTWALGATFIRKFYTEFDRRNNRIGFALAR
Host:	Mouse
Reactivity:	Human
Isotype:	IgG1 kappa
Quality Control Testing:	Antibody Reactive Against Recombinant Protein.



Western Blot detection against Immunogen (67.87 KDa) .

Storage Buffer: In 1x PBS, pH 7.4

Storage Instruction: Store at -20°C or lower. Aliquot to avoid repeated freezing and thawing.

MSDS: [Download](#)

Datasheet: [Download](#)

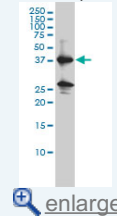
Publication Reference

1. HIV-induced kidney cell injury: role of ROS-induced downregulated vitamin D receptor. Salhan D, Husain M, Subrati A, Goyal R, Singh T, Rai P, Malhotra A, Singhal PC. Am J Physiol Renal Physiol. 2012 Aug;303(4):F503-14. Epub 2012 May 30.

Applications

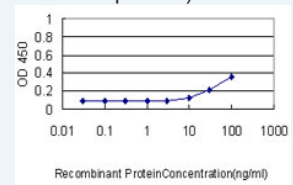
Application Image

Western Blot (Cell lysate)



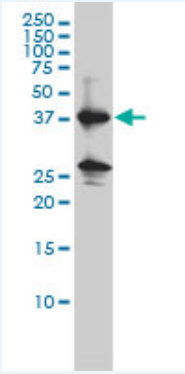
Western Blot (Recombinant protein)

Sandwich ELISA (Recombinant protein)



ELISA

Western Blot (Cell lysate)



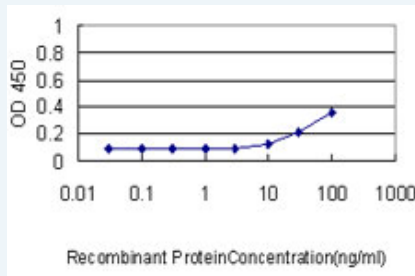
REN monoclonal antibody (M01), clone 2H2 Western Blot analysis of REN expression in K-562 (Cat # L009V1).

 [Protocol Download](#)

Western Blot (Recombinant protein)

 [Protocol Download](#)

Sandwich ELISA (Recombinant protein)



Detection limit for recombinant GST tagged REN is approximately 1ng/ml as a capture antibody.

 [Protocol Download](#)

ELISA

Gene Information

Entrez GeneID: [5972](#)

GeneBank [BC047752](#)

Accession#:

Protein [AAH47752](#)

Accession#:

Gene Name: REN

Gene Alias: FLJ10761

Gene renin

Description:

Omim ID: [179820](#), [267430](#)

Gene Ontology: [Hyperlink](#)

Gene Summary: Renin catalyzes the first step in the activation pathway of angiotensinogen--a cascade that can result in aldosterone release, vasoconstriction, and increase in blood pressure. Renin, an aspartyl protease, cleaves angiotensinogen to form angiotensin I, which is converted to angiotensin II by angiotensin I converting enzyme, an important regulator of blood pressure and electrolyte balance. Transcript variants that encode different protein isoforms and that arise from alternative splicing and the use of alternative promoters have been

described, but their full-length nature has not been determined.
Mutations in this gene have been shown to cause familial
hyperproreninemia. [provided by RefSeq

Other OTTHUMP00000034311,angiotensin-forming
Designations: enzyme,angiotensinogenase,renin precursor, renal

Gene Pathway

[Renin-angiotensin system](#)

Related Disease

[Alzheimer Disease](#) [Alzheimer disease](#) [Arrhythmias](#), [Cardiac](#) [Brain Ischemia](#)
[Cardiovascular Diseases](#) [Carotid Stenosis](#) [Cerebrovascular Accident](#) [Chorioamnionitis](#)
[Coronary Artery Disease](#) [Death, Sudden, Cardiac](#) [Diabetes Complications](#)
[Diabetes Mellitus](#) [Diabetes Mellitus, Type 2](#) [Diabetic Angiopathies](#) [Diabetic Nephropathies](#)
[Edema](#) [Emergencies](#) [Fetal Membranes, Premature Rupture](#)
[Genetic Predisposition to Disease](#)

... see more

[服務條款](#) | [隱私權政策](#) | [著作及商標](#) | [網站地圖](#)

©2016 亞諾法生技股份有限公司 Abnova Corporation. 版權所有.