



SZABO SCANDIC

Part of Europa Biosite

Produktinformation



Forschungsprodukte & Biochemikalien



Zellkultur & Verbrauchsmaterial



Diagnostik & molekulare Diagnostik



Laborgeräte & Service

Weitere Information auf den folgenden Seiten!
See the following pages for more information!



Lieferung & Zahlungsart

siehe unsere [Liefer- und Versandbedingungen](#)

Zuschläge

- Mindermengenzuschlag
- Trockeneiszuschlag
- Gefahrgutzuschlag
- Expressversand

SZABO-SCANDIC HandelsgmbH

Quellenstraße 110, A-1100 Wien

T. +43(0)1 489 3961-0

F. +43(0)1 489 3961-7

mail@szabo-scandic.com

www.szabo-scandic.com

[linkedin.com/company/szaboscandic](https://www.linkedin.com/company/szaboscandic) 

REN monoclonal antibody (M02), clone 3B5

Catalog # : H00005972-M02

規格 : [100 ug]

[List All](#)

Specification

Product Description: Mouse monoclonal antibody raised against a full-length recombinant REN.

Immunogen: REN (AAH47752, 24 a.a. ~ 406 a.a) full-length recombinant protein with GST tag. MW of the GST tag alone is 26 KDa.

Sequence:
 LPTDTTTFKRIFLKRMPISRESLKERGVDMARLGPEWSQPMKRLTLGNT
 TSSVILTNYMDTQYYGEIGTTPPQTFKVVFDGSSMWWPSSKCSRLYT
 ACVYHKLFDASDSSSYKHNGTELTRYSTGTVSGFLSQDIITVGGITVTQ
 MFGVTEMPALPFMLAEFDGVVGMGFIQAIGRVTPIFDNIISQGVLKEDV
 FSYFYNRDSSENSQSLGGQMLGGSDPQHYEGNFHYINLIKTGVWQIQMK
 GVSVGSSTLLCEDGCLALVDTGASYISGSTSSIEKLMEALGAKKRLFDYV
 VKCNEGPTLPDISFHLGGKEYTLTSADYVFQESYSSKKLCTLAIHAMDIPP
 PTGPTWALGATFIRKFYTEFDRRNNRIGFALAR

Host: Mouse

Reactivity: Human

Isotype: IgG1 Kappa

Quality Control Testing: Antibody Reactive Against Recombinant Protein.



Western Blot detection against Immunogen (67.87 KDa) .

Storage Buffer: In 1x PBS, pH 7.4

Storage Instruction: Store at -20°C or lower. Aliquot to avoid repeated freezing and thawing.

MSDS: [Download](#)

Datasheet: [Download](#)

Applications

Western Blot (Recombinant protein)

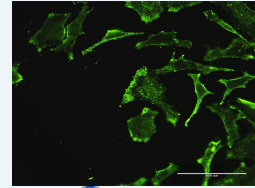
[Protocol Download](#)

Immunofluorescence

Application Image

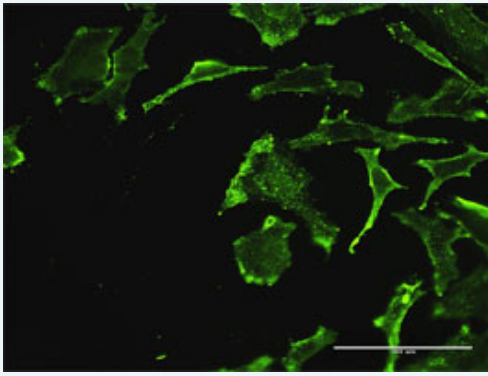
Western Blot (Recombinant protein)

Immunofluorescence



[enlarge](#)

ELISA



[enlarge this image](#)

Immunofluorescence of monoclonal antibody to REN on HeLa cell . [antibody concentration 15 ug/ml]

[Protocol Download](#)

ELISA

Gene Information

Entrez GeneID: [5972](#)

GeneBank Accession#: [BC047752](#)

Protein Accession#: [AAH47752](#)

Gene Name: REN

Gene Alias: FLJ10761

Gene Description: renin

Omim ID: [179820](#), [267430](#)

Gene Ontology: [Hyperlink](#)

Gene Summary: Renin catalyzes the first step in the activation pathway of angiotensinogen--a cascade that can result in aldosterone release, vasoconstriction, and increase in blood pressure. Renin, an aspartyl protease, cleaves angiotensinogen to form angiotensin I, which is converted to angiotensin II by angiotensin I converting enzyme, an important regulator of blood pressure and electrolyte balance. Transcript variants that encode different protein isoforms and that arise from alternative splicing and the use of alternative promoters have been described, but their full-length nature has not been determined. Mutations in this gene have been shown to cause familial hyperproreninemia. [provided by RefSeq]

Other Designations: OTTHUMP00000034311, angiotensin-forming enzyme, angiotensinogenase, renin precursor, renal

Gene Pathway

[Renin-angiotensin system](#)

Related Disease

[Alzheimer Disease](#) [Alzheimer disease](#) [Arrhythmias](#) [Cardiac Brain Ischemia](#) [Cardiovascular Diseases](#) [Carotid Stenosis](#) [Cerebrovascular Accident](#) [Chorioamnionitis](#) [Coronary Artery Disease](#) [Death, Sudden, Cardiac](#) [Diabetes Complications](#) [Diabetes Mellitus](#) [Diabetes Mellitus, Type 2](#) [Diabetic Angiopathies](#) [Diabetic Nephropathies](#) [Edema](#) [Emergencies](#) [Fetal Membranes, Premature Rupture](#) [Genetic Predisposition to Disease](#)

[... see more](#)

[服務條款](#) | [隱私權政策](#) | [著作及商標](#) | [網站地圖](#)

©2016 亞諾法生技股份有限公司 Abnova Corporation. 版權所有.