



SZABO SCANDIC

Part of Europa Biosite

Produktinformation



Forschungsprodukte & Biochemikalien



Zellkultur & Verbrauchsmaterial



Diagnostik & molekulare Diagnostik



Laborgeräte & Service

Weitere Information auf den folgenden Seiten!
See the following pages for more information!



Lieferung & Zahlungsart

siehe unsere [Liefer- und Versandbedingungen](#)

Zuschläge

- Mindermengenzuschlag
- Trockeneiszuschlag
- Gefahrgutzuschlag
- Expressversand

SZABO-SCANDIC HandelsgmbH

Quellenstraße 110, A-1100 Wien

T. +43(0)1 489 3961-0

F. +43(0)1 489 3961-7

mail@szabo-scandic.com

www.szabo-scandic.com

[linkedin.com/company/szaboscandic](https://www.linkedin.com/company/szaboscandic) 

RET purified MaxPab rabbit polyclonal antibody (D01P) MaxPab®

Catalog # : H00005979-D01P

規格 : [100 ug]

[List All](#)

Specification

Product Description: Rabbit polyclonal antibody raised against a full-length human RET protein.

Immunogen: RET (AAH04257.1, 1 a.a. ~ 1072 a.a) full-length human protein.

Sequence:
 MAKATSGAAGLRLLLLLLLLLLGKVALGLYFSRDAYWEKLYVDQAAGTP
 LLYVHALRDAPEEVPSFRLGQHLYGTYRTRLHENNWICIQEDTGLLYLNR
 SLDHSSWEKLSVRNRGFPLLTVYLKVFLSPTSLREGECQWPGCARVYF
 SFFNTSFPACSSLKPRELCFPETRPSFRIRENRPPGTFHQFRLLPVQFLC
 PNISVAYRLLLEGGLPFRCAPDSLEVSTRWALDREQREKYLAVAVCTVH
 AGAREEVMVPPVTVYDEDDSAPTFPAGVDTASAVVEFKRKEDTVVAT
 LRVFDADVVPASGELVRRYTSTLLPGDTWAQQTFRVEHWPNETSVQAN
 GSFVRATVHDYRLVLRNLSISENRTMQLAVLVNDSDFQGGPGAGVLLLH
 FNVSVLPVSLHLPSTYSLSVRRARRFAQIGKVCVENCQAFSGINVQYKL
 HSSGANCSLTVVTSVSAEDTSGILFVNDTKALRRPKCAELHYMVVATDQQ
 TSRQAQAQLLVTEGYSVAEEAGCPLSCAVSKRRLECEECGGLGSPTG
 RCEWRQGDGKGITRNFSTCSPSTKTCPDGHCDVWETQDINICPQDCLR
 GSVGGHEPGEPRGIKAGYGTNCNCFPEEEKCFCEPEDIQDPLCDEL CRT
 VIAAALVLSFIVSVLLSAFCIHCYHKFAHKPPISSAEMTFRRPAQAFVVSYS
 SSSARRPSLDSMENQVSVDAFKILEDPKWEFPRKNLVLGKTLGEGEFGK
 VVKATAFHLKGRAGYTTVAVKMLKENASPELRDLLSEFNMLKQVNHPH
 VIKLYGACSQDGPLLLIVEYAKYGSRLRGLRESRKVGPYLGSGGSRNS
 SSLDHPDERALTMGDLISFAWQISQGMQYLAEMKLVHRDLAARNILVAEG
 RKMKISDFGLSRDVEEDSYVKRSQGRIPVKWMAIESLFDHIYTTQSDVW
 SFGVLLWEIVTLGGNPYPGIPPERLFNLLKTGHRMERPDNCSEEMYCLM
 LQCWKQEPDKRPVFAISKDLEKMMVKRRDYDLAASTPSDSLIDDGL
 SEEETPLVDCNNAPLPRALPSTWIENKLYGRISHAFTRF

Host: Rabbit

Reactivity: Human, Mouse

Quality Control Testing: Antibody reactive against mammalian transfected lysate.

Storage Buffer: In 1x PBS, pH 7.4

Storage Instruction: Store at -20°C or lower. Aliquot to avoid repeated freezing and thawing.

MSDS: [Download](#)

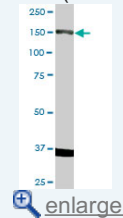
Datasheet: [Download](#)

Applications

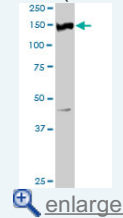
Western Blot (Tissue lysate)

Application Image

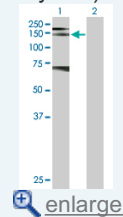
Western Blot (Tissue lysate)



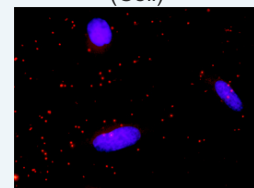
Western Blot (Tissue lysate)

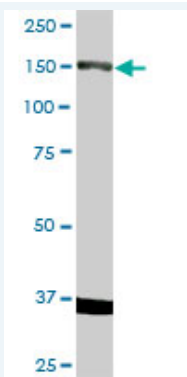


Western Blot (Transfected lysate)



In situ Proximity Ligation Assay (Cell)

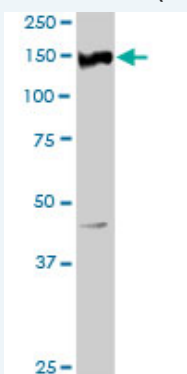





RET MaxPab rabbit polyclonal antibody. Western Blot analysis of RET expression in human liver.

 [Protocol Download](#)

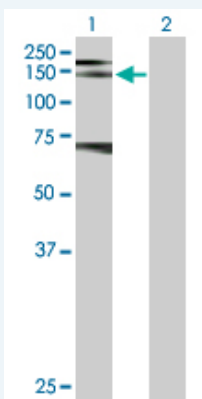
Western Blot (Tissue lysate)



RET MaxPab rabbit polyclonal antibody. Western Blot analysis of RET expression in mouse liver.

 [Protocol Download](#)


Western Blot (Transfected lysate)



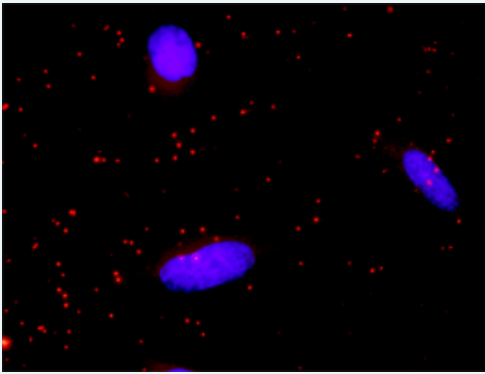
Western Blot analysis of RET expression in transfected 293T cell line ([H00005979-T02](#)) by RET MaxPab polyclonal antibody.

Lane 1: RET transfected lysate(119.80 KDa).

Lane 2: Non-transfected lysate.

 [Protocol Download](#)

In situ Proximity Ligation Assay (Cell)



Proximity Ligation Analysis of protein-protein interactions between RET and MAPK1. HeLa cells were stained with anti-RET rabbit purified polyclonal 1:1200 and anti-MAPK1 mouse monoclonal antibody 1:50. Each red dot represents the detection of protein-protein interaction complex, and nuclei were counterstained with DAPI (blue).

Gene Information

Entrez GeneID: [5979](#)

GeneBank [BC004257.1](#)
Accession#:

Protein [AAH04257.1](#)
Accession#:

Gene Name: RET

Gene Alias: CDHF12,HSCR1,MEN2A,MEN2B,MTC1,PTC,RET-ELE1,RET51

Gene Description: ret proto-oncogene

Omim ID: [142623](#), [155240](#), [162300](#), [164761](#), [171300](#), [171400](#), [209880](#)

Gene Ontology: [Hyperlink](#)

Gene Summary: This gene, a member of the cadherin superfamily, encodes one of the receptor tyrosine kinases, which are cell-surface molecules that transduce signals for cell growth and differentiation. This gene plays a crucial role in neural crest development, and it can undergo oncogenic activation in vivo and in vitro by cytogenetic rearrangement. Mutations in this gene are associated with the disorders multiple endocrine neoplasia, type IIA, multiple endocrine neoplasia, type IIB, Hirschsprung disease, and medullary thyroid carcinoma. Two transcript variants encoding different isoforms have been found for this gene. Additional transcript variants have been described but their biological validity has not been confirmed. [provided by RefSeq]

Other Designations: RET transforming sequence,cadherin family member 12,hydroxyaryl-protein kinase,oncogene RET,receptor tyrosine kinase,ret proto-oncogene (multiple endocrine neoplasia and medullary thyroid carcinoma 1, Hirschsprung disease)

Gene Pathway

[Endocytosis Pathways in cancer](#) [Thyroid cancer](#)

Related Disease

[Adenocarcinoma](#) [Adenocarcinoma, Follicular](#) [Adenocarcinoma, Papillary](#) [Adenoma](#) [Adrenal Gland Neoplasms](#) [Alzheimer Disease](#) [Atherosclerosis](#) [Atherosclerosis Carcinoma](#) [Carcinoma](#) [Medullary Carcinoma](#) [Papillary Carcinoma](#) [Papillary, Follicular](#) [Cleft Lip](#) [Cleft Palate](#) [Digestive System Abnormalities](#) [Disease Progression](#) [Down Syndrome](#) [Endocrine Gland Neoplasms](#) [Esophageal Neoplasms](#)

[... see more](#)

[服務條款](#) | [隱私權政策](#) | [著作及商標](#) | [網站地圖](#)

©2016 亞諾法生技股份有限公司 Abnova Corporation. 版權所有.