



SZABO SCANDIC

Part of Europa Biosite

Produktinformation



Forschungsprodukte & Biochemikalien



Zellkultur & Verbrauchsmaterial



Diagnostik & molekulare Diagnostik



Laborgeräte & Service

Weitere Information auf den folgenden Seiten!
See the following pages for more information!



Lieferung & Zahlungsart

siehe unsere [Liefer- und Versandbedingungen](#)

Zuschläge

- Mindermengenzuschlag
- Trockeneiszuschlag
- Gefahrgutzuschlag
- Expressversand

SZABO-SCANDIC HandelsgmbH

Quellenstraße 110, A-1100 Wien

T. +43(0)1 489 3961-0

F. +43(0)1 489 3961-7

mail@szabo-scandic.com

www.szabo-scandic.com

[linkedin.com/company/szaboscandic](https://www.linkedin.com/company/szaboscandic) 

REV3L polyclonal antibody (A01)

Catalog # : H00005980-A01

規格 : [50 uL]

List All

Specification

Product Description: Mouse polyclonal antibody raised against a partial recombinant REV3L.

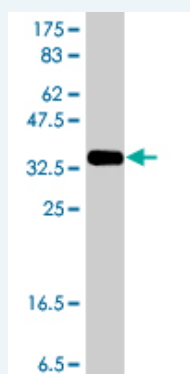
Immunogen: REV3L (NP_002903, 2953 a.a. ~ 3052 a.a) partial recombinant protein with GST tag.

Sequence: GTISQYFTTLHCPVCDLTLQHGICSKCRSQPHVAVILNQEIRELERQQEQLVKICKNCTGCFDRHIPCVS LNCPVLFKLSRVNRELSKAPYLRQLLDQF

Host: Mouse

Reactivity: Human

Quality Control Testing: Antibody Reactive Against Recombinant Protein.



Western Blot detection against Immunogen (37.11 kDa) .

Storage Buffer: 50 % glycerol

Storage Instruction: Store at -20°C or lower. Aliquot to avoid repeated freezing and thawing.

MSDS:  [Download](#)

Datasheet:  [Download](#)

Publication Reference

1. [REV3L, the catalytic subunit of DNA polymerase \$\zeta\$, is involved in the progression and chemoresistance of esophageal squamous cell carcinoma.](#)
Zhu X, Zou S, Zhou J, Zhu H, Zhang S, Shang Z, Ding WQ, Wu J, Chen Y. *Oncol Rep.* 2016 Jan 5. [Epub ahead of print]
2. [REV3L modulates cisplatin sensitivity of non-small cell lung cancer H1299 cells.](#)
Wang W, Sheng W, Yu C, Cao J, Zhou J, Wu J, Zhang H, Zhang S. *Oncology Reports.* 2015 Jul.
3. [REV3L 3'UTR 460 T>C polymorphism in microRNA target sites contributes to lung cancer susceptibility.](#)
Zhang S, Chen H, Zhao X, Cao J, Tong J, Lu J, Wu W, Shen H, Wei Q, Lu D. *Oncogene.* 2012 Feb 20. doi: 10.1038/onc.2012.32. [Epub ahead of print]

Application Image

Western Blot (Recombinant protein)

ELISA

Applications

Western Blot (Recombinant protein)

 [Protocol Download](#)

ELISA

Gene Information

Entrez GeneID: [5980](#)

GeneBank Accession#: [NM_002912](#)

Protein Accession#: [NP_002903](#)

Gene Name: REV3L

Gene Alias: POLZ,REV3

Gene Description: REV3-like, catalytic subunit of DNA polymerase zeta (yeast)

Omim ID: [602776](#)

Gene Ontology: [Hyperlink](#)

Other Designations: OTTHUMP00000017933,OTTHUMP00000017934,OTTHUMP00000040457,Polymerase, DNA, zeta (Rev-3, yeast, homolog of),REV3-like, catalytic subunit of DNA polymerase zeta,Rev-3, yeast, homolog-like (polymerase, DNA, zeta)

Gene Pathway

[Metabolic pathways](#)

Related Disease

[Adenocarcinoma](#) [Esophageal Neoplasms](#) [Genetic Predisposition to Disease](#)
[Kidney Failure, Chronic](#) [Stomach Neoplasms](#) [Urinary Bladder Neoplasms](#)

[服務條款](#) | [隱私權政策](#) | [著作及商標](#) | [網站地圖](#)

©2016 亞諾法生技股份有限公司 Abnova Corporation. 版權所有.