



# SZABO SCANDIC

Part of Europa Biosite

## Produktinformation



Forschungsprodukte & Biochemikalien



Zellkultur & Verbrauchsmaterial



Diagnostik & molekulare Diagnostik



Laborgeräte & Service

Weitere Information auf den folgenden Seiten!  
See the following pages for more information!



### Lieferung & Zahlungsart

siehe unsere [Liefer- und Versandbedingungen](#)

### Zuschläge

- Mindermengenzuschlag
- Trockeneiszuschlag
- Gefahrgutzuschlag
- Expressversand

### SZABO-SCANDIC HandelsgmbH

Quellenstraße 110, A-1100 Wien

T. +43(0)1 489 3961-0

F. +43(0)1 489 3961-7

[mail@szabo-scandic.com](mailto:mail@szabo-scandic.com)

[www.szabo-scandic.com](http://www.szabo-scandic.com)

[linkedin.com/company/szaboscandic](https://www.linkedin.com/company/szaboscandic) 

## RFC1 polyclonal antibody (A01)

Catalog # : H00005981-A01

規格 : [ 50 uL ]

List All

### Specification

**Product Description:** Mouse polyclonal antibody raised against a partial recombinant RFC1.

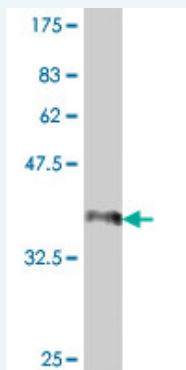
**Immunogen:** RFC1 (AAH51786, 1 a.a. ~ 110 a.a) partial recombinant protein with GST tag.

**Sequence:** MDIRKFFGVIPSGKLVSETVKKNEKTKSDEETLKAKKGIKEIKVNSSRKE  
DDFKQKQPSKKRIYDSDSESEETLQVKNAKKPPEKLPVSSKPGKISRQ  
DPVTYISET

**Host:** Mouse

**Reactivity:** Human

**Quality Control Testing:** Antibody Reactive Against Recombinant Protein.



Western Blot detection against Immunogen (38.1 KDa) .

**Storage Buffer:** 50 % glycerol

**Storage Instruction:** Store at -20°C or lower. Aliquot to avoid repeated freezing and thawing.

**MSDS:** [Download](#)

**Datasheet:** [Download](#)

### Applications

Western Blot (Recombinant protein)

[Protocol Download](#)

ELISA

### Gene Information

**Entrez GeneID:** [5981](#)

**GeneBank Accession#:** [BC051786](#)

### Application Image

Western Blot (Recombinant protein)

ELISA

**Protein**      [AAH51786](#)  
**Accession#:**

**Gene Name:**    RFC1

**Gene Alias:**    A1,MGC51786,MHCBFB,PO-GA,RECC1,RFC,RFC140

**Gene**            replication factor C (activator 1) 1, 145kDa  
**Description:**

**Omim ID:**        [102579](#)

**Gene Ontology:** [Hyperlink](#)

**Gene Summary:** The protein encoded by this gene is the large subunit of replication factor C, which is a five subunit DNA polymerase accessory protein. Replication factor C is a DNA-dependent ATPase that is required for eukaryotic DNA replication and repair. The protein acts as an activator of DNA polymerases, binds to the 3' end of primers, and promotes coordinated synthesis of both strands. It also may have a role in telomere stability. [provided by RefSeq]

**Other**            MHC binding factor, beta,replication factor C (activator 1) 1  
**Designations:** (145kD),replication factor C large subunit,replication factor C1

#### **Gene Pathway**

[DNA replication](#) [Mismatch repair](#) [Nucleotide excision repair](#)

#### **Related Disease**

[Abnormalities, Multiple Abruption Placentae](#) [Adenocarcinoma](#) [Adenoma](#) [Alcoholism](#)  
[Alzheimer Disease](#) [Alzheimer disease](#) [Anemia, Iron-Deficiency](#) [Aneuploidy](#)  
[Arthritis, Psoriatic Arthritis, Rheumatoid](#) [Autistic Disorder](#) [Avitaminosis](#) [Bone Neoplasms](#)  
[Brain Neoplasms](#) [Breast cancer](#) [Breast Neoplasms](#) [Carcinoma, Large Cell](#)  
[Carcinoma, Non-Small-Cell Lung](#)

... see more