



# SZABO SCANDIC

Part of Europa Biosite

## Produktinformation



Forschungsprodukte & Biochemikalien



Zellkultur & Verbrauchsmaterial



Diagnostik & molekulare Diagnostik



Laborgeräte & Service

Weitere Information auf den folgenden Seiten!  
See the following pages for more information!



### Lieferung & Zahlungsart

siehe unsere [Liefer- und Versandbedingungen](#)

### Zuschläge

- Mindermengenzuschlag
- Trockeneiszuschlag
- Gefahrgutzuschlag
- Expressversand

### SZABO-SCANDIC HandelsgmbH

Quellenstraße 110, A-1100 Wien

T. +43(0)1 489 3961-0

F. +43(0)1 489 3961-7

[mail@szabo-scandic.com](mailto:mail@szabo-scandic.com)

[www.szabo-scandic.com](http://www.szabo-scandic.com)

[linkedin.com/company/szaboscandic](https://www.linkedin.com/company/szaboscandic) 

## RFC2 purified MaxPab mouse polyclonal antibody (B01P) MaxPab®

Catalog # : H00005982-B01P

規格 : [ 50 ug ]

[List All](#)

### Specification

**Product Description:** Mouse polyclonal antibody raised against a full-length human RFC2 protein.

**Immunogen:** RFC2 (AAH02813, 1 a.a. ~ 320 a.a) full-length human protein.

**Sequence:**  
 MEVEAVCGGAGEVEAQSDPAPAFSKAPGSAGHYELPWVEKYRPVKLN  
 EIVGNEDTVSRLEVFAREGNVFNIIAGPPGTGKTTILCLARALLGPALKD  
 AMLELNASNDSMTDGAQQALRRRTMEIYSKTRFALACNASDKIIEPIQSRC  
 AVLRYTKLTDAILTRLMNVIEKERVPTDDGLEAIFTAQQDMRQALNLL  
 QSTFSGFGFINSENVFKVCDEPHLLVKEMIQHCYNANIDEAYKILAHLWH  
 LGYSPEDIIGNIFRVCKTFQMAEYLKLEFIKEIGYTHMKIAEGVNSLLQMAG  
 LLARLCQKTMAPVAS

**Host:** Mouse

**Reactivity:** Human

**Quality Control Testing:** Antibody reactive against mammalian transfected lysate.

**Storage Buffer:** In 1x PBS, pH 7.4

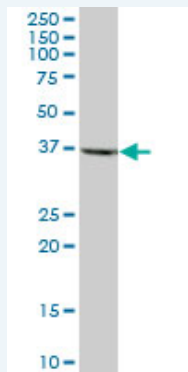
**Storage Instruction:** Store at -20°C or lower. Aliquot to avoid repeated freezing and thawing.

**MSDS:**  [Download](#)

**Datasheet:**  [Download](#)

### Applications

#### Western Blot (Tissue lysate)



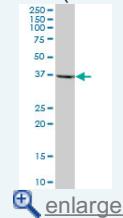
RFC2 MaxPab polyclonal antibody. Western Blot analysis of RFC2 expression in human pancreas.

 [Protocol Download](#)

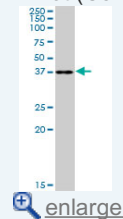
#### Western Blot (Cell lysate)

### Application Image

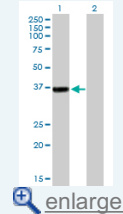
#### Western Blot (Tissue lysate)



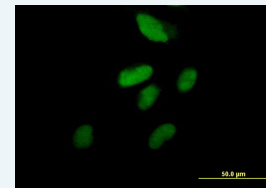
#### Western Blot (Cell lysate)




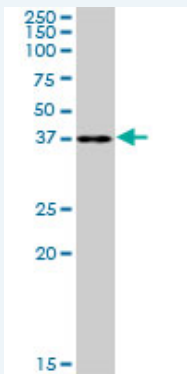
#### Western Blot (Transfected lysate)



#### Immunofluorescence



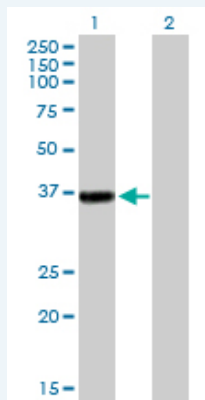
 [enlarge](#)



RFC2 MaxPab polyclonal antibody. Western Blot analysis of RFC2 expression in HeLa S3 NE.

 [Protocol Download](#)

#### Western Blot (Transfected lysate)



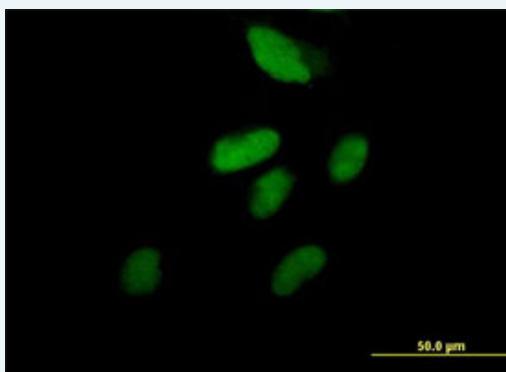
Western Blot analysis of RFC2 expression in transfected 293T cell line ([H00005982-T01](#)) by RFC2 MaxPab polyclonal antibody.


Lane 1: RFC2 transfected lysate(35.2 KDa).

Lane 2: Non-transfected lysate.

 [Protocol Download](#)

#### Immunofluorescence



 enlarge this image

Immunofluorescence of purified MaxPab antibody to RFC2 on HeLa cell. [antibody concentration 10 ug/ml]

 [Protocol Download](#)

#### Gene Information

Entrez GeneID: [5982](#)

GeneBank [BC002813.1](#)  
Accession#:

Protein [AAH02813](#)  
Accession#:

Gene Name: RFC2

**Gene Alias:** A1,MGC3665,RFC40

**Gene Description:** replication factor C (activator 1) 2, 40kDa

**Omim ID:** [600404](#)

**Gene Ontology:** [Hyperlink](#)

**Gene Summary:** The elongation of primed DNA templates by DNA polymerase delta and epsilon requires the action of the accessory proteins, proliferating cell nuclear antigen (PCNA) and replication factor C (RFC). RFC, also called activator 1, is a protein complex consisting of five distinct subunits of 145, 40, 38, 37, and 36.5 kD. This gene encodes the 40 kD subunit, which has been shown to be responsible for binding ATP. Deletion of this gene has been associated with Williams syndrome. Alternatively spliced transcript variants encoding distinct isoforms have been described. [provided by RefSeq]

**Other Designations:** activator 1,replication factor C 2

### Gene Pathway

[DNA replication](#) [Mismatch repair](#) [Nucleotide excision repair](#)

### Related Disease

[Genetic Predisposition to Disease](#) [Graft vs Host Disease](#) [Multiple Sclerosis](#)  
[Urinary Bladder Neoplasms](#)