



SZABO SCANDIC

Part of Europa Biosite

Produktinformation



Forschungsprodukte & Biochemikalien



Zellkultur & Verbrauchsmaterial



Diagnostik & molekulare Diagnostik



Laborgeräte & Service

Weitere Information auf den folgenden Seiten!
See the following pages for more information!



Lieferung & Zahlungsart

siehe unsere [Liefer- und Versandbedingungen](#)

Zuschläge

- Mindermengenzuschlag
- Trockeneiszuschlag
- Gefahrgutzuschlag
- Expressversand

SZABO-SCANDIC HandelsgmbH

Quellenstraße 110, A-1100 Wien

T. +43(0)1 489 3961-0

F. +43(0)1 489 3961-7

mail@szabo-scandic.com

www.szabo-scandic.com

[linkedin.com/company/szaboscandic](https://www.linkedin.com/company/szaboscandic) 

RFC3 purified MaxPab mouse polyclonal antibody (B02P) MaxPab®

Catalog # : H00005983-B02P

規格 : [50 ug]

[List All](#)

Specification

Product Description: Mouse polyclonal antibody raised against a full-length human RFC3 protein.

Immunogen: RFC3 (NP_002906.1, 1 a.a. ~ 356 a.a) full-length human protein.

Sequence:
 MSLWVDKYRPCSLGRLDYHKEQAAQLRNLVQCGDFPHLLVYGPSPGAG
 KKTRIMCILRELYGVGVEKLRIEHQITITPSKKKIEISTIASNYHLEVNPSDA
 GNSDRVVIQEMLKTVAQSQQLLETNSQRDFKVVLLTEVDKLTKDAQHALR
 RTMEKYMSTCRLILCCNSTSKVIPPISRCLAVRVPAPSIEDICHVLSTVCK
 KEGLNLPSQLAHLAEKSCRNLKALLMCEACRVQYQYPFTADQEIPETD
 WEVYLRETANAIVSQQTPQRLLLEVRGRLYELLTHCIPPEIIMKGLLSELLH
 NCDGQLKGEVAQMAAYYEHRLQLGSKAIYHLEAFVAKFMALYKKFMEDG
 LEGMMF

Host: Mouse

Reactivity: Human

Quality Control Testing: Antibody reactive against mammalian transfected lysate.

Storage Buffer: In 1x PBS, pH 7.4

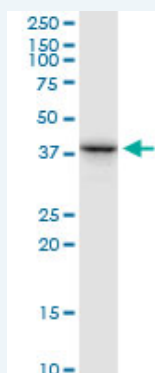
Storage Instruction: Store at -20°C or lower. Aliquot to avoid repeated freezing and thawing.

MSDS: [Download](#)

Datasheet: [Download](#)

Applications

Western Blot (Cell lysate)



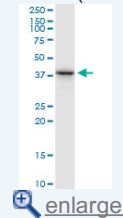
RFC3 MaxPab polyclonal antibody. Western Blot analysis of RFC3 expression in Jurkat.

[Protocol Download](#)

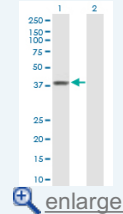
Western Blot (Transfected lysate)

Application Image

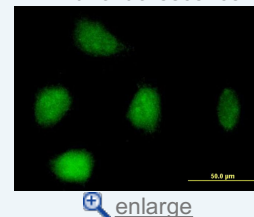
Western Blot (Cell lysate)

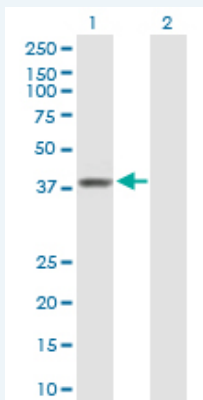


Western Blot (Transfected lysate)



Immunofluorescence



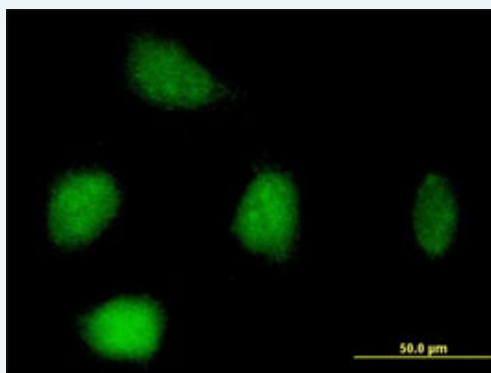


Western Blot analysis of RFC3 expression in transfected 293T cell line ([H00005983-T02](#)) by RFC3 MaxPab polyclonal antibody.

Lane 1: RFC3 transfected lysate(40.60 kDa).
Lane 2: Non-transfected lysate.

[Protocol Download](#)

Immunofluorescence



enlarge this image

Immunofluorescence of purified MaxPab antibody to RFC3 on HeLa cell. [antibody concentration 10 ug/ml]

[Protocol Download](#)

Gene Information

Entrez GeneID: [5983](#)

GeneBank [NM_002915](#)
Accession#:

Protein [NP_002906.1](#)
Accession#:

Gene Name: RFC3

Gene Alias: MGC5276,RFC38

Gene Description: replication factor C (activator 1) 3, 38kDa

Omim ID: [600405](#)

Gene Ontology: [Hyperlink](#)

Gene Summary: The elongation of primed DNA templates by DNA polymerase delta and DNA polymerase epsilon requires the accessory proteins proliferating cell nuclear antigen (PCNA) and replication factor C (RFC). RFC, also named activator 1, is a protein complex consisting of five distinct subunits of 140, 40, 38, 37, and 36 kDa. This gene encodes the 38 kDa subunit. This subunit is essential for the interaction between the 140 kDa subunit and the core complex that consists of the 36, 37, and 40 kDa subunits. Alternatively spliced transcript variants encoding distinct

isoforms have been described. [provided by RefSeq

Other A1 38 kDa subunit,OTTHUMP00000018237,RFC, 38 kD

Designations: subunit,replication factor C (activator 1) 3 (38kD),replication factor C 3

Gene Pathway

[DNA replication](#) [Mismatch repair](#) [Nucleotide excision repair](#)

Related Disease

[Cardiovascular Diseases](#) [Diabetes Mellitus, Type 2](#) [Edema](#) [Graft vs Host Disease](#)
[Kidney Failure, Chronic](#) [Tobacco Use Disorder](#) [Urinary Bladder Neoplasms](#)

[服務條款](#) | [隱私權政策](#) | [著作及商標](#) | [網站地圖](#)

©2016 亞諾法生技股份有限公司 Abnova Corporation. 版權所有.