



# SZABO SCANDIC

Part of Europa Biosite

## Produktinformation



Forschungsprodukte & Biochemikalien



Zellkultur & Verbrauchsmaterial



Diagnostik & molekulare Diagnostik



Laborgeräte & Service

Weitere Information auf den folgenden Seiten!  
See the following pages for more information!



### Lieferung & Zahlungsart

siehe unsere [Liefer- und Versandbedingungen](#)

### Zuschläge

- Mindermengenzuschlag
- Trockeneiszuschlag
- Gefahrgutzuschlag
- Expressversand

### SZABO-SCANDIC HandelsgmbH

Quellenstraße 110, A-1100 Wien

T. +43(0)1 489 3961-0

F. +43(0)1 489 3961-7

[mail@szabo-scandic.com](mailto:mail@szabo-scandic.com)

[www.szabo-scandic.com](http://www.szabo-scandic.com)

[linkedin.com/company/szaboscandic](https://www.linkedin.com/company/szaboscandic) 

## RFC5 purified MaxPab mouse polyclonal antibody (B02P) MaxPab®

Catalog # : H00005985-B02P

規格 : [ 50 ug ]

[List All](#)

### Specification

**Product Description:** Mouse polyclonal antibody raised against a full-length human RFC5 protein.

**Immunogen:** RFC5 (NP\_031396, 1 a.a. ~ 340 a.a) full-length human protein.

**Sequence:** METSALKQQEQPAATKIRNLPWVEKYRPQTLNDLISHQDILSTIQKFINED  
 RLPHELLLYGPPGTGKTSTILACAKQLYKDFEFGSMVLELNASDDRGIDIIR  
 GPILSFASTRTRIFKKGFKLVILDEADAMTQDAQNALRRVIEKFTENTRFCLI  
 CNYLSKIIPALQSRCTFRFRGPLTPELMVPRLEHVVEEKVDISEGDMKAL  
 VTLSSGDMRRALNILQSTNMAFGKVTEETVYTCTGHPLKSDIANILDWML  
 NQDFTTAYRNITELKTLKGLALHDILTEIHLFVHRVDFPSSVRIHLLTKMADI  
 EYRLSVGTNEKIQLSSLIAAFQVTRDLIVAEA

**Host:** Mouse

**Reactivity:** Human

**Quality Control Testing:** Antibody reactive against mammalian transfected lysate.

**Storage Buffer:** In 1x PBS, pH 7.4

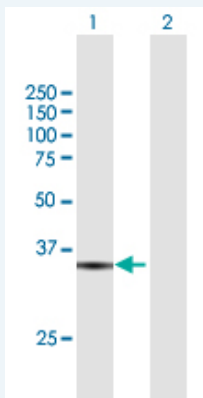
**Storage Instruction:** Store at -20°C or lower. Aliquot to avoid repeated freezing and thawing.

**MSDS:** [Download](#)

**Datasheet:** [Download](#)

### Applications

#### Western Blot (Transfected lysate)



Western Blot analysis of RFC5 expression in transfected 293T cell line (H00005985-T01) by RFC5 MaxPab polyclonal antibody.

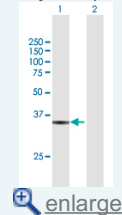
Lane 1: RFC5 transfected lysate(37.4 KDa).

Lane 2: Non-transfected lysate.

[Protocol Download](#)

### Application Image

Western Blot (Transfected lysate)



## Gene Information

---

**Entrez GeneID:** [5985](#)

---

**GeneBank  
Accession#:** [NM\\_007370](#)

---

**Protein  
Accession#:** [NP\\_031396](#)

---

**Gene Name:** RFC5

---

**Gene Alias:** MGC1155,RFC36

---

**Gene  
Description:** replication factor C (activator 1) 5, 36.5kDa

---

**Omim ID:** [600407](#)

---

**Gene Ontology:** [Hyperlink](#)

---

**Gene Summary:** The elongation of primed DNA templates by DNA polymerase delta and DNA polymerase epsilon requires the accessory proteins proliferating cell nuclear antigen (PCNA) and replication factor C (RFC). RFC, also named activator 1, is a protein complex consisting of five distinct subunits of 140, 40, 38, 37, and 36 kD. This gene encodes the 36 kD subunit. This subunit can interact with the C-terminal region of PCNA. It forms a core complex with the 38 and 40 kDa subunits. The core complex possesses DNA-dependent ATPase activity, which was found to be stimulated by PCNA in an in vitro system. Alternatively spliced transcript variants encoding distinct isoforms have been reported. [provided by RefSeq]

---

**Other  
Designations:** A1 36 kDa subunit,RFC, 36.5 kD subunit,activator 1 36 kDa subunit,replication factor C (activator 1) 5 (36.5kD),replication factor C 5

---

## Gene Pathway

---

[DNA replication](#) [Mismatch repair](#) [Nucleotide excision repair](#)

## Related Disease

---

[Genetic Predisposition to Disease](#) [Graft vs Host Disease](#) [Multiple Sclerosis](#)  
[Urinary Bladder Neoplasms](#)