



SZABO SCANDIC

Part of Europa Biosite

Produktinformation



Forschungsprodukte & Biochemikalien



Zellkultur & Verbrauchsmaterial



Diagnostik & molekulare Diagnostik



Laborgeräte & Service

Weitere Information auf den folgenden Seiten!
See the following pages for more information!



Lieferung & Zahlungsart

siehe unsere [Liefer- und Versandbedingungen](#)

Zuschläge

- Mindermengenzuschlag
- Trockeneiszuschlag
- Gefahrgutzuschlag
- Expressversand

SZABO-SCANDIC HandelsgmbH

Quellenstraße 110, A-1100 Wien

T. +43(0)1 489 3961-0

F. +43(0)1 489 3961-7

mail@szabo-scandic.com

www.szabo-scandic.com

[linkedin.com/company/szaboscandic](https://www.linkedin.com/company/szaboscandic) 



RFX2 MaxPab mouse polyclonal antibody (B01) MaxPab®

Catalog # : H00005990-B01

規格 : [50 uL]

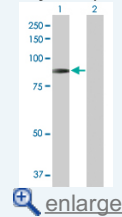
[List All](#)

Specification

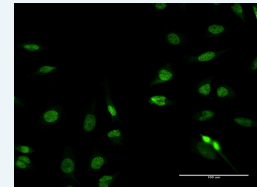
Product Description:	Mouse polyclonal antibody raised against a full-length human RFX2 protein.
Immunogen:	RFX2 (AAH28579.1, 1 a.a. ~ 723 a.a) full-length human protein.
Sequence:	<p>MQNSEGGADSPASVALRPSAAAPPVPASPQRVLVQAASSNPKGAQMQP ISLPRVQQVPQQVQPVQHVYPAQVQYVEGGDAVYTNNGAIRTAYTYNPEP QMYAPSSSTASYFEAPGGAQVTVASSPPAVPSHSMVGITMDVGGSPIVS SAGAYLIHGGMDSTRHSLAHTSRSSPATLEMAIENLQKSEGITSHKSGLLN SHLQWLLDNYETAEGVSLPRSSLYNHYL RHCQEHLDPVNAASF GKLIRS VFMGLRTRRLGTRGNSKYHYGIRLKPDSPLNRLQEDTQYMAMRQQPM HQKPRYRPAQKTDSLGDGSHSGLHSTPEQTMVQSQHHQQYIDVSHV FPEFPAPDLGSFLLQDGVTLHDVKALQLVYRRHCEATVDVVMNLQFHYI EKLWLSFWNSKASSSDGPTSLPASDEDPEGAVLPKDKLISLQCQCDPILR WMRSCDHILYQALVEILIPDVLRPVPSTLTQAIRNFAKSLEGWLTNAMSDF PQQVIQTKVGVVSAFAQTLRRYTSLNHLAQAARAVLQNTSQINQMLSDL NRVDVANVQEQASWVCQCEESVQRLEQDFKLTQQQSSLDQWASW LDSVVTQVLKQHAGSPSPFKAAQQFLLKWSFYSSMVRDLTLRSAASFG SFHLIRLLYDEYMFYLVHRVAEATGETPIAVMGEFNDLASLSLTLDDKDD MGDEQRGSEAGPDARSLGEPLVKRERSDPNHSLQGI</p>
Host:	Mouse
Reactivity:	Human
Quality Control Testing:	Antibody reactive against mammalian transfected lysate.
Storage Buffer:	No additive
Storage Instruction:	Store at -20°C or lower. Aliquot to avoid repeated freezing and thawing.
Note:	For IHC and IF applications, antibody purification with Protein A will be needed prior to use.
MSDS:	 Download
Datasheet:	 Download

Application Image

Western Blot (Transfected lysate)

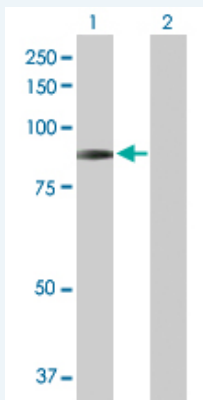


Immunofluorescence



Applications

Western Blot (Transfected lysate)

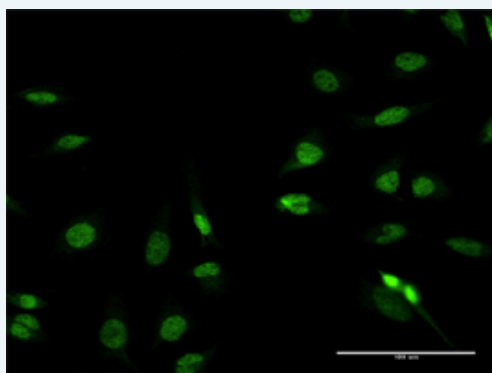


Western Blot analysis of RFX2 expression in transfected 293T cell line ([H00005990-T02](#)) by RFX2 MaxPab polyclonal antibody.

Lane 1: RFX2 transfected lysate(80.00 KDa).
Lane 2: Non-transfected lysate.

[Protocol Download](#)

Immunofluorescence



[enlarge this image](#)

Immunofluorescence of [purified](#) MaxPab antibody to RFX2 on HeLa cell. [antibody concentration 10 ug/ml]

[Protocol Download](#)

Gene Information

Entrez GeneID: [5990](#)

GeneBank [BC028579.1](#)
Accession#:

Protein [AAH28579.1](#)
Accession#:

Gene Name: RFX2

Gene Alias: FLJ14226

Gene regulatory factor X, 2 (influences HLA class II expression)
Description:

Omim ID: [142765](#)

Gene Ontology: [Hyperlink](#)

Gene Summary: This gene is a member of the regulatory factor X gene family, which encodes transcription factors that contain a highly-conserved winged helix DNA binding domain. The protein encoded by this gene is structurally related to regulatory factors X1, X3, X4, and X5. It is a transcriptional activator that can bind DNA as a monomer or as a heterodimer with other RFX family members. This protein can bind to cis elements in the promoter of the IL-5 receptor alpha gene. Two transcript variants encoding different isoforms have been described for this gene,

and both variants utilize alternative polyadenylation sites. [provided by RefSeq]

Other DNA binding protein RFX2,HLA class II regulatory factor
Designations: RFX2,regulatory factor X2,trans-acting regulatory factor 2

Related Disease

[Cardiovascular Diseases](#) [Diabetes Mellitus, Type 2](#) [Edema](#)

[服務條款](#) | [隱私權政策](#) | [著作及商標](#) | [網站地圖](#)

©2016 亞諾法生技股份有限公司 Abnova Corporation. 版權所有.