



# SZABO SCANDIC

Part of Europa Biosite

## Produktinformation



Forschungsprodukte & Biochemikalien



Zellkultur & Verbrauchsmaterial



Diagnostik & molekulare Diagnostik



Laborgeräte & Service

Weitere Information auf den folgenden Seiten!  
See the following pages for more information!



### Lieferung & Zahlungsart

siehe unsere [Liefer- und Versandbedingungen](#)

### Zuschläge

- Mindermengenzuschlag
- Trockeneiszuschlag
- Gefahrgutzuschlag
- Expressversand

### SZABO-SCANDIC HandelsgmbH

Quellenstraße 110, A-1100 Wien

T. +43(0)1 489 3961-0

F. +43(0)1 489 3961-7

[mail@szabo-scandic.com](mailto:mail@szabo-scandic.com)

[www.szabo-scandic.com](http://www.szabo-scandic.com)

[linkedin.com/company/szaboscandic](https://www.linkedin.com/company/szaboscandic) 

**RFX2 purified MaxPab mouse polyclonal antibody (B01P)** MaxPab®

Catalog # : H00005990-B01P

規格 : [ 50 ug ]

[List All](#)

**Specification**

**Product Description:** Mouse polyclonal antibody raised against a full-length human RFX2 protein.

**Immunogen:** RFX2 (AAH28579.1, 1 a.a. ~ 723 a.a) full-length human protein.

**Sequence:**  
 MQNSEGGADSPASVALRPSAAAPPVPASPQRVLVQAASSNPKGAQMQP  
 ISLPRVQQVPPQQVQVQHVYPAQVQYVEGGDAVYTNNGAIRTAYTYNPEP  
 QMYAPSSTASYFEAPGGAQVTVASSPPAVPSHSMVGITMDVGGSPIVS  
 SAGAYLIHGGMDSTRHSLAHTSRSSPATLEMAIENLQKSEGITSHKSGLLN  
 SHLQWLLDNYETAEGVSLPRSSLYNHYL RHCQEHLDPVNAASF GKLIRS  
 VFMGLRTRRLGTRGNSKYHYGIRLKPDSPLNRLQEDTQYMAMRQQPM  
 HQKPRYRPAQKTDSLGDGSGSHGLHSTPEQTMVQSQHHQQYIDVSHV  
 FPEFPAPDLGSFLLQDGVTLHDVKALQLVYRRHCEATVDVVMNLQFHYI  
 EKLWLSFWNSKASSSDGPTSLPASDEDPEGAVLPKDKLISLCQCDPILR  
 WMRSCDHILYQALVEILIPDVL RVPSTLTQAIRNFAKSLEGWLTNAMSDF  
 PQQVIQTKVGVVSAFAQTLRRYTSLNHLAQAARAVLQNTSQINQMLSDL  
 NRVDVANVQEQASWVCQCEESVQRLEQDFKLTQQQSSLDQWASW  
 LDSVVTQVLKQHAGSPSPFKAAQQFLLKWSFYSSMVIDLTLRSAASFG  
 SFHLIRLLYDEYMFYLVHRVAEATGETPIAVMGEFNDLASLSLTLKDD  
 MGDEQRGSEAGPDARSLGEPLVKRERSDPNHSLQGI

**Host:** Mouse

**Reactivity:** Human

**Quality Control Testing:** Antibody reactive against mammalian transfected lysate.

**Storage Buffer:** In 1x PBS, pH 7.4

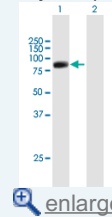
**Storage Instruction:** Store at -20°C or lower. Aliquot to avoid repeated freezing and thawing.


**MSDS:**  [Download](#)

**Datasheet:**  [Download](#)

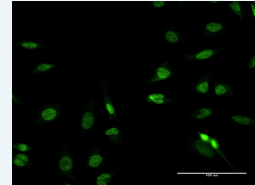
**Application Image**


Western Blot (Transfected lysate)



 [enlarge](#)

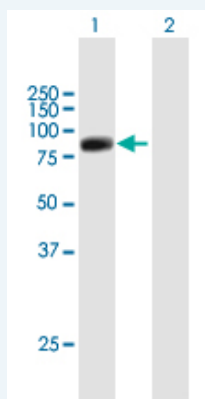
Immunofluorescence



 [enlarge](#)

**Applications**

Western Blot (Transfected lysate)

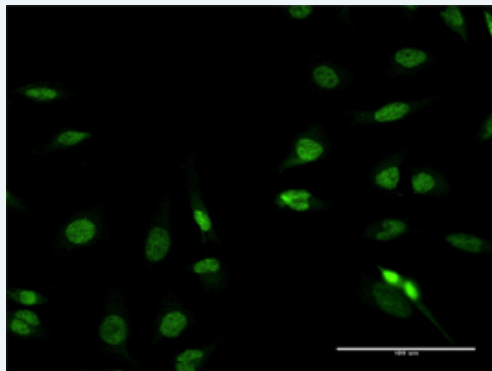



Western Blot analysis of RFX2 expression in transfected 293T cell line ([H00005990-T02](#)) by RFX2 MaxPab polyclonal antibody.

Lane 1: RFX2 transfected lysate(80.00 KDa).  
Lane 2: Non-transfected lysate.

 [Protocol Download](#)

### Immunofluorescence



 [enlarge this image](#)

Immunofluorescence of [purified](#) MaxPab antibody to RFX2 on HeLa cell. [antibody concentration 10 ug/ml]

 [Protocol Download](#)

### Gene Information

**Entrez GeneID:** [5990](#)

**GeneBank Accession#:** [BC028579.1](#)

**Protein Accession#:** [AAH28579.1](#)

**Gene Name:** RFX2

**Gene Alias:** FLJ14226

**Gene Description:** regulatory factor X, 2 (influences HLA class II expression)

**Omim ID:** [142765](#)

**Gene Ontology:** [Hyperlink](#)

**Gene Summary:** This gene is a member of the regulatory factor X gene family, which encodes transcription factors that contain a highly-conserved winged helix DNA binding domain. The protein encoded by this gene is structurally related to regulatory factors X1, X3, X4, and X5. It is a transcriptional activator that can bind DNA as a monomer or as a heterodimer with other RFX family members. This protein can bind to cis elements in the promoter of the IL-5 receptor alpha gene. Two transcript variants encoding different isoforms have been described for this gene, and both variants utilize alternative polyadenylation sites. [provided by RefSeq]

**Other Designations:** DNA binding protein RFX2,HLA class II regulatory factor RFX2,regulatory factor X2,trans-acting regulatory factor 2

### Related Disease

[Cardiovascular Diseases](#) [Diabetes Mellitus, Type 2](#) [Edema](#)

