



SZABO SCANDIC

Part of Europa Biosite

Produktinformation



Forschungsprodukte & Biochemikalien



Zellkultur & Verbrauchsmaterial



Diagnostik & molekulare Diagnostik



Laborgeräte & Service

Weitere Information auf den folgenden Seiten!
See the following pages for more information!



Lieferung & Zahlungsart

siehe unsere [Liefer- und Versandbedingungen](#)

Zuschläge

- Mindermengenzuschlag
- Trockeneiszuschlag
- Gefahrgutzuschlag
- Expressversand

SZABO-SCANDIC HandelsgmbH

Quellenstraße 110, A-1100 Wien

T. +43(0)1 489 3961-0

F. +43(0)1 489 3961-7

mail@szabo-scandic.com

www.szabo-scandic.com

[linkedin.com/company/szaboscandic](https://www.linkedin.com/company/szaboscandic) 

RGR polyclonal antibody (A01)

Catalog # : H00005995-A01

規格 : [50 uL]

List All

Specification

Product Description: Mouse polyclonal antibody raised against a full-length recombinant RGR.

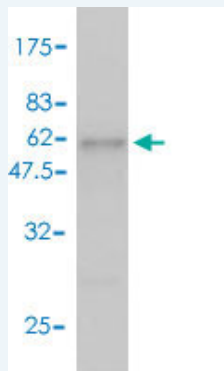
Immunogen: RGR (AAH11349, 1 a.a. ~ 295 a.a) full-length recombinant protein with GST tag.

Sequence: MAETSALPTGFGELEVLAVGMVLLVEALSGLSLNLTIFSFCKTPELRTP
CHLLVLSLALADSGISLNALVAATSSLLRVSHRRWPYGS DGCQAHGFQG
FVTALASICSSAAIAWGRYHHYCTRSQLAWNSAVSLVLFVWLSSAFWAA
LPLLGWGHYDYEPLGTCCTLDYSGDRNFTSFLFTMSFFNFAMPLFITIT
SYSLMEQKLGKSGHLQVNTTLPARTLLL GWGPYAILYLYAVIADVTSISPK
LQMVPALIAKMVPTINAINYALGNEMVCRGIWQCLSPQKREKDRTK

Host: Mouse

Reactivity: Human

Quality Control Testing: Antibody Reactive Against Recombinant Protein.



Western Blot detection against Immunogen (58.56 KDa) .

Storage Buffer: 50 % glycerol

Storage Instruction: Store at -20°C or lower. Aliquot to avoid repeated freezing and thawing.

MSDS: [Download](#)

Datasheet: [Download](#)

Applications

Western Blot (Recombinant protein)

[Protocol Download](#)

ELISA

Gene Information

Entrez GeneID: [5995](#)

Application Image

Western Blot (Recombinant protein)

ELISA

**GeneBank
Accession#:** [BC011349](#)

**Protein
Accession#:** [AAH11349](#)

Gene Name: RGR

Gene Alias: -

**Gene
Description:** retinal G protein coupled receptor

Omim ID: [600342](#)

Gene Ontology: [Hyperlink](#)

Gene Summary: This gene encodes a putative retinal G-protein coupled receptor. The gene is a member of the opsin subfamily of the 7 transmembrane, G-protein coupled receptor 1 family. Like other opsins which bind retinaldehyde, it contains a conserved lysine residue in the seventh transmembrane domain. The protein acts as a photoisomerase to catalyze the conversion of all-trans-retinal to 11-cis-retinal. The reverse isomerization occurs with rhodopsin in retinal photoreceptor cells. The protein is exclusively expressed in tissue adjacent to retinal photoreceptor cells, the retinal pigment epithelium and Mueller cells. This gene may be associated with autosomal recessive and autosomal dominant retinitis pigmentosa (arRP and adRP, respectively). Alternative splicing results in multiple transcript variants encoding different isoforms. [provided by RefSeq]

**Other
Designations:** OTTHUMP00000019996,RGR-opsin,RPE retinal G-protein coupled receptor,retinal G-protein coupled receptor

Related Disease

[Alzheimer Disease Genetic Predisposition to Disease](#) [Retinal Diseases](#) [Retinal Dystrophies](#) [Retinitis Pigmentosa](#)

[服務條款](#) | [隱私權政策](#) | [著作及商標](#) | [網站地圖](#)

©2016 亞諾法生技股份有限公司 Abnova Corporation. 版權所有.