



SZABO SCANDIC

Part of Europa Biosite

Produktinformation



Forschungsprodukte & Biochemikalien



Zellkultur & Verbrauchsmaterial



Diagnostik & molekulare Diagnostik



Laborgeräte & Service

Weitere Information auf den folgenden Seiten!
See the following pages for more information!



Lieferung & Zahlungsart

siehe unsere [Liefer- und Versandbedingungen](#)

Zuschläge

- Mindermengenzuschlag
- Trockeneiszuschlag
- Gefahrgutzuschlag
- Expressversand

SZABO-SCANDIC HandelsgmbH

Quellenstraße 110, A-1100 Wien

T. +43(0)1 489 3961-0

F. +43(0)1 489 3961-7

mail@szabo-scandic.com

www.szabo-scandic.com

[linkedin.com/company/szaboscandic](https://www.linkedin.com/company/szaboscandic) 

RGS1 purified MaxPab rabbit polyclonal antibody (D01P) MaxPab®

Catalog # : H00005996-D01P

規格 : [100 ug]

[List All](#)

Specification

Product Description: Rabbit polyclonal antibody raised against a full-length human RGS1 protein.

Immunogen: RGS1 (AAH15510.1, 1 a.a. ~ 196 a.a) full-length human protein.

Sequence:
 MPGMFFSANPKELKGTTHSLDDKMQKRRPKTFGMDMKAYLRSMIPHL
 ESGMKSSKSKDVL SAAEVMQWSQSLEKLLANQTGQNVFGSFLKSEFSE
 ENIEFWLACEDYKKTESDLLPCKAEEIYKAFVHSDAAKQINIDFRTRESTA
 KKIKAPTPTCFDEAQKVIYTLMEKDSYPRFLKSDIYLNLLNLDLQANSLK

Host: Rabbit

Reactivity: Human

Quality Control Testing: Antibody reactive against mammalian transfected lysate.

Storage Buffer: In 1x PBS, pH 7.4

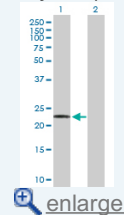
Storage Instruction: Store at -20°C or lower. Aliquot to avoid repeated freezing and thawing.


MSDS:  [Download](#)

Datasheet:  [Download](#)

Application Image

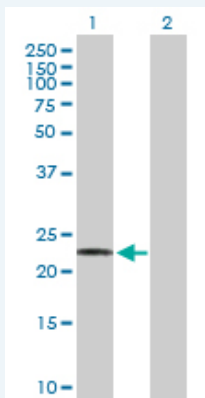
Western Blot (Transfected lysate)



 [enlarge](#)


Applications

Western Blot (Transfected lysate)



Western Blot analysis of RGS1 expression in transfected 293T cell line ([H00005996-T02](#)) by RGS1 MaxPab polyclonal antibody.

Lane 1: RGS1 transfected lysate(22.50 KDa).
 Lane 2: Non-transfected lysate.

 [Protocol Download](#)

Gene Information

Entrez GeneID: [5996](#)

**GeneBank
Accession#:** [NM_002922](#)

**Protein
Accession#:** [AAH15510.1](#)

Gene Name: RGS1

Gene Alias: 1R20,BL34,IER1,IR20

**Gene
Description:** regulator of G-protein signaling 1

Omim ID: [600323](#)

Gene Ontology: [Hyperlink](#)

Gene Summary: This gene encodes a member of the regulator of G-protein signalling family. This protein is located on the cytosolic side of the plasma membrane and contains a conserved, 120 amino acid motif called the RGS domain. The protein attenuates the signalling activity of G-proteins by binding to activated, GTP-bound G alpha subunits and acting as a GTPase activating protein (GAP), increasing the rate of conversion of the GTP to GDP. This hydrolysis allows the G alpha subunits to bind G beta/gamma subunit heterodimers, forming inactive G-protein heterotrimers, thereby terminating the signal. [provided by RefSeq]

**Other
Designations:** B-cell activation protein BL34,OTTHUMP00000033591,early response protein 1R20,immediate-early response 1, B-cell specific,regulator of G-protein signalling 1

Related Disease

[Anorexia Nervosa](#) [Bulimia](#) [Carcinoma, Squamous Cell](#) [Cardiovascular Diseases](#)
[Celiac Disease](#) [Diabetes Mellitus, Type 1](#) [Diabetes Mellitus, Type 2](#) [Edema](#)
[Genetic Predisposition to Disease](#) [Head and Neck Neoplasms](#) [Multiple Sclerosis](#)
[Neoplasm Recurrence, Local](#) [Neoplasms, Second Primary](#)

[服務條款](#) | [隱私權政策](#) | [著作及商標](#) | [網站地圖](#)

©2016 亞諾法生技股份有限公司 Abnova Corporation. 版權所有.