



SZABO SCANDIC

Part of Europa Biosite

Produktinformation



Forschungsprodukte & Biochemikalien



Zellkultur & Verbrauchsmaterial



Diagnostik & molekulare Diagnostik



Laborgeräte & Service

Weitere Information auf den folgenden Seiten!
See the following pages for more information!



Lieferung & Zahlungsart

siehe unsere [Liefer- und Versandbedingungen](#)

Zuschläge

- Mindermengenzuschlag
- Trockeneiszuschlag
- Gefahrgutzuschlag
- Expressversand

SZABO-SCANDIC HandelsgmbH

Quellenstraße 110, A-1100 Wien

T. +43(0)1 489 3961-0

F. +43(0)1 489 3961-7

mail@szabo-scandic.com

www.szabo-scandic.com

[linkedin.com/company/szaboscandic](https://www.linkedin.com/company/szaboscandic) 



RGS13 monoclonal antibody (M10), clone 1D5

Catalog # : H00006003-M10

規格 : [100 ug]

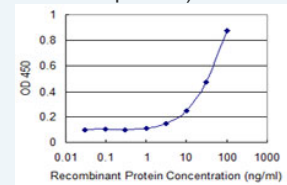
[List All](#)


Specification

Product Description:	Mouse monoclonal antibody raised against a full-length recombinant RGS13.
Immunogen:	RGS13 (AAH16667, 1 a.a. ~ 159 a.a) full-length recombinant protein with GST tag. MW of the GST tag alone is 26 KDa.
Sequence:	MSRRNCWICKMCRDESKRPPSNLTLEEVLQWAQSFENLMATKYGPVY AAYLKMEHSDENIQFWMACETYKKIASRWSRISRAKKLYKIYIQPQSPREIN IDSSTRETIIRNIQEPTETCFEEAQKIVYMHMERDSYPRFLKSEMYQKLLKT MQSNNSF
Host:	Mouse
Reactivity:	Human
Isotype:	IgG2a Kappa
Quality Control Testing:	Antibody Reactive Against Recombinant Protein.
Storage Buffer:	In 1x PBS, pH 7.4
Storage Instruction:	Store at -20°C or lower. Aliquot to avoid repeated freezing and thawing.
MSDS:	 Download
Datasheet:	 Download

Application Image

Sandwich ELISA (Recombinant protein)

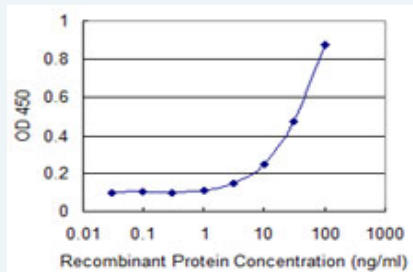


 [enlarge](#)


ELISA

Applications

Sandwich ELISA (Recombinant protein)



Detection limit for recombinant GST tagged RGS13 is 1 ng/ml as a capture antibody.

 [Protocol Download](#)

ELISA

Gene Information

Entrez GeneID: [6003](#)

GeneBank [BC016667](#)

Accession#:**Protein** [AAH16667](#)**Accession#:****Gene Name:** RGS13**Gene Alias:** MGC17173**Gene** regulator of G-protein signaling 13**Description:****Omim ID:** [607190](#)**Gene Ontology:** [Hyperlink](#)

Gene Summary: The protein encoded by this gene is a member of the regulator of G protein signaling (RGS) family. RGS family members share similarity with *S. cerevisiae* SST2 and *C. elegans* egl-10 proteins, which contain a characteristic conserved RGS domain. RGS proteins accelerate GTPase activity of G protein alpha-subunits, thereby driving G protein into their inactive GDP-bound form, thus negatively regulating G protein signaling. RGS proteins have been implicated in the fine tuning of a variety of cellular events in response to G protein-coupled receptor activation. The biological function of this gene, however, is unknown. Two transcript variants encoding the same isoform exist. [provided by RefSeq]

Other OTTHUMP00000033593,regulator of G-protein signalling 13**Designations:****Related Disease**

[Anorexia Nervosa](#) [Bulimia](#) [Carcinoma, Squamous Cell](#) [Genetic Predisposition to Disease](#)
[Head and Neck Neoplasms](#) [Neoplasm Recurrence, Local](#) [Neoplasms, Second Primary](#)

[服務條款](#) | [隱私權政策](#) | [著作及商標](#) | [網站地圖](#)

©2016 亞諾法生技股份有限公司 Abnova Corporation. 版權所有.