



SZABO SCANDIC

Part of Europa Biosite

Produktinformation



Forschungsprodukte & Biochemikalien



Zellkultur & Verbrauchsmaterial



Diagnostik & molekulare Diagnostik



Laborgeräte & Service

Weitere Information auf den folgenden Seiten!
See the following pages for more information!



Lieferung & Zahlungsart

siehe unsere [Liefer- und Versandbedingungen](#)

Zuschläge

- Mindermengenzuschlag
- Trockeneiszuschlag
- Gefahrgutzuschlag
- Expressversand

SZABO-SCANDIC HandelsgmbH

Quellenstraße 110, A-1100 Wien

T. +43(0)1 489 3961-0

F. +43(0)1 489 3961-7

mail@szabo-scandic.com

www.szabo-scandic.com

[linkedin.com/company/szaboscandic](https://www.linkedin.com/company/szaboscandic) 


RHD purified MaxPab mouse polyclonal antibody (B01P) MaxPab®

Catalog # : H00006007-B01P

規格 : [50 ug]

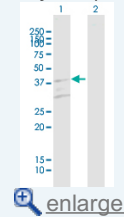
[List All](#)


Specification

| | |
|---------------------------------|---|
| Product Description: | Mouse polyclonal antibody raised against a full-length human RHD protein. |
| Immunogen: | RHD (AAI60075.1, 1 a.a. ~ 417 a.a) full-length human protein. |
| Sequence: | MSSKYPRSVRRCLPLWALTLEAALILLFYFFTHYDASLEDQKGLVASYQV QDLTVMAAIGLGFLTSSFRRHSWSSVAFNLFMLALGVQWAILLDGFLS QFPSGKVVITLFSIRLATMSALSVLISVDAVLGKVNLAQLWVMVLEVTAL GNLRMVISNIFNTDYHMNMMHIYVFAAYFGLSVAWCLPKPLPEGTEKDKQ TATIPSLSAMLGALFLWMFWPSFNSALLRSPIERKNAVFNTYYAVAVSV TAISGSSLAHPQGKISKTYVHSAVLGGVAVGTSCHLIPSPWLAMVGLV AGLISVGGAKYLPGCCNRVLGIPHSSIMGYNFSLLGLLGEIYVLLVLDTV GAGNGMIGFQVLLSIGELSLAVIALTSGLLTGLLLNLKIWKAPHEAKYFDD QVFWKFPHLAVGF |
| Host: | Mouse |
| Reactivity: | Human |
| Quality Control Testing: | Antibody reactive against mammalian transfected lysate. |
| Storage Buffer: | In 1x PBS, pH 7.4 |
| Storage Instruction: | Store at -20°C or lower. Aliquot to avoid repeated freezing and thawing. |
| Datasheet: |  Download |

Application Image

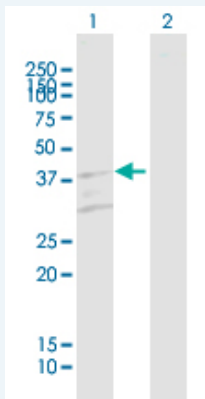
Western Blot (Transfected lysate)



 [enlarge](#)

Applications


Western Blot (Transfected lysate)



Western Blot analysis of RHD expression in transfected 293T cell line (H00006007-T02) by RHD MaxPab polyclonal antibody.

Lane 1: RHD transfected lysate(45.87 KDa).

Lane 2: Non-transfected lysate.

 [Protocol Download](#)

Gene Information

Entrez GeneID: [6007](#)

**GeneBank
Accession#:** [BC160075.1](#)

**Protein
Accession#:** [AAI60075.1](#)

Gene Name: RHD

Gene Alias: CD240D,DIIIc,MGC165007,RH,RH30,RHCED,RHDVA(TT),RHDel,RHPII,
RHXIII,Rh4,RhDCw,RhII,RhK562-II,RhPI

**Gene
Description:** Rh blood group, D antigen

Omim ID: [111680](#)

Gene Ontology: [Hyperlink](#)

Gene Summary: The Rh blood group system is the second most clinically significant of the blood groups, second only to ABO. It is also the most polymorphic of the blood groups, with variations due to deletions, gene conversions, and missense mutations. The Rh blood group includes this gene, which encodes the RhD protein, and a second gene that encodes both the RhC and RhE antigens on a single polypeptide. The two genes, and a third unrelated gene, are found in a cluster on chromosome 1. The classification of Rh-positive and Rh-negative individuals is determined by the presence or absence of the highly immunogenic RhD protein on the surface of erythrocytes. Multiple transcript variants encoding different isoforms have been found for this gene. [provided by RefSeq]

**Other
Designations:** D antigen (DCS),OTTHUMP00000003536,RH polypeptide 2,Rh blood group D antigen,Rh blood group antigen Evans,Rhesus system D polypeptide

Related Disease

[AIDS-Related Opportunistic Infections](#) [Chromosome Deletion](#) [Erythroblastosis, Fetal](#) [Fetal Diseases](#) [Genetic Predisposition to Disease](#) [Liver Cirrhosis](#) [Pregnancy Complications](#), [Hematologic Rh Isoimmunization](#) [Schizophrenia](#) [Schizophrenia](#) [Tuberculosis](#)

[服務條款](#) | [隱私權政策](#) | [著作及商標](#) | [網站地圖](#)

©2016 亞諾法生技股份有限公司 Abnova Corporation. 版權所有.