



SZABO SCANDIC

Part of Europa Biosite

Produktinformation



Forschungsprodukte & Biochemikalien



Zellkultur & Verbrauchsmaterial



Diagnostik & molekulare Diagnostik



Laborgeräte & Service

Weitere Information auf den folgenden Seiten!
See the following pages for more information!



Lieferung & Zahlungsart

siehe unsere [Liefer- und Versandbedingungen](#)

Zuschläge

- Mindermengenzuschlag
- Trockeneiszuschlag
- Gefahrgutzuschlag
- Expressversand

SZABO-SCANDIC HandelsgmbH

Quellenstraße 110, A-1100 Wien

T. +43(0)1 489 3961-0

F. +43(0)1 489 3961-7

mail@szabo-scandic.com

www.szabo-scandic.com

[linkedin.com/company/szaboscandic](https://www.linkedin.com/company/szaboscandic) 



RHEB MaxPab mouse polyclonal antibody (B01) MaxPab®

Catalog # : H00006009-B01

規格 : [50 uL]

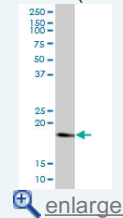
[List All](#)

Specification

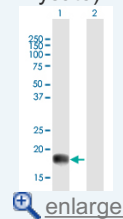
Product Description:	Mouse polyclonal antibody raised against a full-length human RHEB protein.
Immunogen:	RHEB (NP_005605, 1 a.a. ~ 184 a.a) full-length human protein.
Sequence:	MPQSKSRKIALGYRSVGKSSLTIQFVEGQFVDSYDPTIENTFTKLITVNG QEYHLQLVDTAGQDEYSIFPQTYSIDINGYILVYSVTSIKSFVIVIKVIHGKLL DMVGKVIPIMLVGNKKDLHMERSVSYEEGKALAESWNAAFLESSAKENQ TAVDVFRRILEAEKMDGAASQGGKSSCSVM
Host:	Mouse
Reactivity:	Human
Quality Control Testing:	Antibody reactive against mammalian transfected lysate.
Storage Buffer:	No additive
Storage Instruction:	Store at -20°C or lower. Aliquot to avoid repeated freezing and thawing.
Note:	For IHC and IF applications, antibody purification with Protein A will be needed prior to use.
MSDS:	 Download
Datasheet:	 Download

Application Image

Western Blot (Cell lysate)

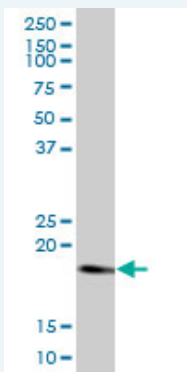


Western Blot (Transfected lysate)



Applications

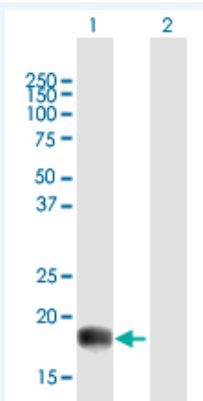
Western Blot (Cell lysate)



RHEB MaxPab polyclonal antibody. Western Blot analysis of RHEB expression in A-431.

 [Protocol Download](#)


Western Blot (Transfected lysate)



Western Blot analysis of RHEB expression in transfected 293T cell line ([H00006009-T01](#)) by RHEB MaxPab polyclonal antibody.

Lane 1: RHEB transfected lysate(20.24 KDa).

Lane 2: Non-transfected lysate.

 [Protocol Download](#)

Gene Information

Entrez GeneID: [6009](#)

GeneBank [NM_005614](#)

Accession#:

Protein [NP_005605](#)

Accession#:

Gene Name: RHEB

Gene Alias: MGC111559,RHEB2

Gene Ras homolog enriched in brain

Description:

Omim ID: [601293](#)

Gene Ontology: [Hyperlink](#)

Gene Summary: This gene is a member of the small GTPase superfamily and encodes a lipid-anchored, cell membrane protein with five repeats of the RAS-related GTP-binding region. This protein is vital in regulation of growth and cell cycle progression due to its role in the insulin/TOR/S6K signaling pathway. The protein has GTPase activity and shuttles between a GDP-bound form and a GTP-bound form, and farnesylation of the protein is required for this activity. Three pseudogenes have been mapped, two on chromosome 10 and one on chromosome 22. [provided by RefSeq]

Other GTP-binding protein Rheb,Ras homolog enriched in brain 2

Designations:

Gene Pathway

[Insulin signaling pathway](#) [mTOR signaling pathway](#)

Related Disease

[Genetic Predisposition to Disease](#) [Urinary Bladder Neoplasms](#)

