



# SZABO SCANDIC

Part of Europa Biosite

## Produktinformation



Forschungsprodukte & Biochemikalien



Zellkultur & Verbrauchsmaterial



Diagnostik & molekulare Diagnostik



Laborgeräte & Service

Weitere Information auf den folgenden Seiten!  
See the following pages for more information!



### Lieferung & Zahlungsart

siehe unsere [Liefer- und Versandbedingungen](#)

### Zuschläge

- Mindermengenzuschlag
- Trockeneiszuschlag
- Gefahrgutzuschlag
- Expressversand

### SZABO-SCANDIC HandelsgmbH

Quellenstraße 110, A-1100 Wien

T. +43(0)1 489 3961-0

F. +43(0)1 489 3961-7

[mail@szabo-scandic.com](mailto:mail@szabo-scandic.com)

[www.szabo-scandic.com](http://www.szabo-scandic.com)

[linkedin.com/company/szaboscandic](https://www.linkedin.com/company/szaboscandic) 

## RHEB purified MaxPab mouse polyclonal antibody (B01P) MaxPab®

Catalog # : H00006009-B01P

規格 : [ 50 ug ]

[List All](#)

### Specification

**Product Description:** Mouse polyclonal antibody raised against a full-length human RHEB protein.

**Immunogen:** RHEB (NP\_005605.1, 1 a.a. ~ 184 a.a) full-length human protein.

**Sequence:**  
 MPQSKSRKIALGYRSVGKSSLTIQFVEGQFVDSYDPTIENTFTKLITVNG  
 QEYHLQLVDTAGQDEYSIFPQTYSIDINGYILVYSVTSIKSFVIVKVIHGKLL  
 DMVGKVIPIMLVGNKKDLHMERSVSYEEGKALAESWNAAFLESSAKENQ  
 TAVDVFRRILEAEKMDGAASQGKSSCSVM

**Host:** Mouse

**Reactivity:** Human

**Quality Control Testing:** Antibody reactive against mammalian transfected lysate.

**Storage Buffer:** In 1x PBS, pH 7.4

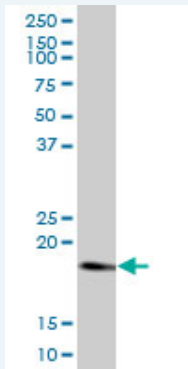
**Storage Instruction:** Store at -20°C or lower. Aliquot to avoid repeated freezing and thawing.

**MSDS:**  [Download](#)


**Datasheet:**  [Download](#)

### Applications

#### Western Blot (Cell lysate)



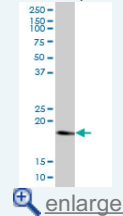
RHEB MaxPab polyclonal antibody. Western Blot analysis of RHEB expression in A-431.

 [Protocol Download](#)

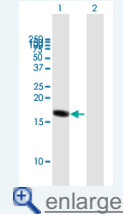
#### Western Blot (Transfected lysate)

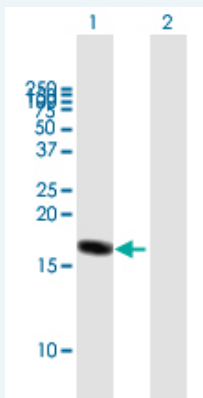
### Application Image

#### Western Blot (Cell lysate)



#### Western Blot (Transfected lysate)





Western Blot analysis of RHEB expression in transfected 293T cell line ([H00006009-T01](#)) by RHEB MaxPab polyclonal antibody.

Lane 1: RHEB transfected lysate(20.24 KDa).

Lane 2: Non-transfected lysate.

Protocol Download

### Gene Information

Entrez GeneID: [6009](#)

GeneBank [NM\\_005614.3](#)

Accession#:

Protein [NP\\_005605.1](#)

Accession#:

Gene Name: RHEB

Gene Alias: MGC111559,RHEB2

Gene Description: Ras homolog enriched in brain

Description:

Omim ID: [601293](#)

Gene Ontology: [Hyperlink](#)

**Gene Summary:** This gene is a member of the small GTPase superfamily and encodes a lipid-anchored, cell membrane protein with five repeats of the RAS-related GTP-binding region. This protein is vital in regulation of growth and cell cycle progression due to its role in the insulin/TOR/S6K signaling pathway. The protein has GTPase activity and shuttles between a GDP-bound form and a GTP-bound form, and farnesylation of the protein is required for this activity. Three pseudogenes have been mapped, two on chromosome 10 and one on chromosome 22. [provided by RefSeq]

Other Designations: GTP-binding protein Rheb,Ras homolog enriched in brain 2

Designations:

### Gene Pathway

[Insulin signaling pathway](#) [mTOR signaling pathway](#)

### Related Disease

[Genetic Predisposition to Disease](#) [Urinary Bladder Neoplasms](#)

