



SZABO SCANDIC

Part of Europa Biosite

Produktinformation



Forschungsprodukte & Biochemikalien



Zellkultur & Verbrauchsmaterial



Diagnostik & molekulare Diagnostik



Laborgeräte & Service

Weitere Information auf den folgenden Seiten!
See the following pages for more information!



Lieferung & Zahlungsart

siehe unsere [Liefer- und Versandbedingungen](#)

Zuschläge

- Mindermengenzuschlag
- Trockeneiszuschlag
- Gefahrgutzuschlag
- Expressversand

SZABO-SCANDIC HandelsgmbH

Quellenstraße 110, A-1100 Wien

T. +43(0)1 489 3961-0

F. +43(0)1 489 3961-7

mail@szabo-scandic.com

www.szabo-scandic.com

[linkedin.com/company/szaboscandic](https://www.linkedin.com/company/szaboscandic) 

RHEB monoclonal antibody (M01), clone 2C11

Catalog # : H00006009-M01

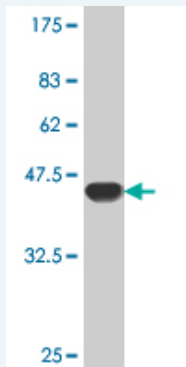
規格 : [100 ug]

List All

Specification

Product Description:	Mouse monoclonal antibody raised against a full-length recombinant RHEB.
Immunogen:	RHEB (AAH16155, 1 a.a. ~ 184 a.a) full-length recombinant protein with GST tag. MW of the GST tag alone is 26 KDa.
Sequence:	MPQSKSRKIALGYRSVVGKSSLTIQFVEGQFVDSYDPTIENTFTKLITVNG QEYHLQLVDTAGQDEYSIFPQTYSIDINGYILVYSVTSIKSFEVIKVIHGKLL DMV/GK/VQIPIMLVGNKKDLHMERSVISYEEGKALAESWNAAFLESSAKENQ TAVDVFRRRIIEAEKMDGAASQGKSSCSVM
Host:	Mouse
Reactivity:	Human, Mouse, Rat
Isotype:	IgG1 Kappa

Quality Control Testing: Antibody Reactive Against Recombinant Protein.



Storage Buffer: In 1x PBS, pH 7.4

Storage Instruction: Store at -20°C or lower. Aliquot to avoid repeated freezing and thawing.

MSDS: [Download](#)

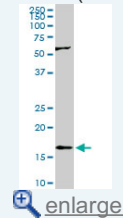
Datasheet: [Download](#)

Publication Reference

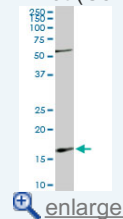
- [p53 Deletion or Hot-spot Mutations Enhance mTORC1 Activity by Altering Lysosomal Dynamics of TSC2 and Rheb.](#)
Agarwal S, Bell CM, Taylor SM, Moran RG. Mol Cancer Res. 2015 Sep 18. [Epub ahead of print]
- [Spatial Control of the TSC Complex Integrates Insulin and Nutrient Regulation of mTORC1 at the Lysosome.](#)
Menon S, Dibble CC, Talbott G, Hoxhaj G, Valvezan AJ, Takahashi H, Cantley LC, Manning BD. Cell. 2014 Feb 13;156(4):771-85.

Application Image

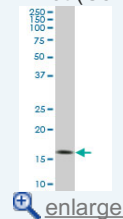
Western Blot (Cell lysate)



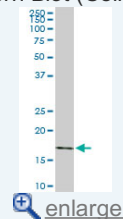
Western Blot (Cell lysate)



Western Blot (Cell lysate)

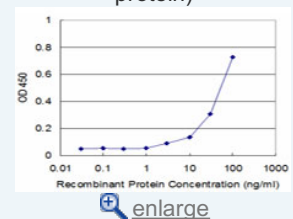


Western Blot (Cell lysate)



Western Blot (Recombinant protein)

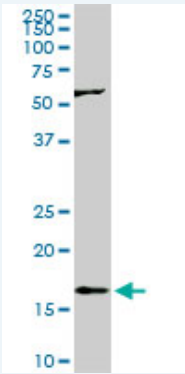
Sandwich ELISA (Recombinant protein)



ELISA

Applications

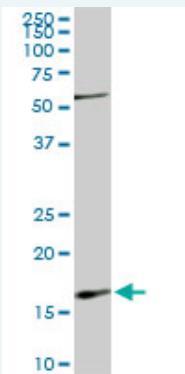
Western Blot (Cell lysate)



RHEB monoclonal antibody (M01), clone 2C11. Western Blot analysis of RHEB expression in PC-12 (Cat # L012V1).

 [Protocol Download](#)

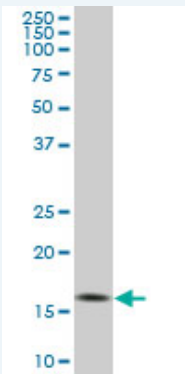
Western Blot (Cell lysate)



RHEB monoclonal antibody (M01), clone 2C11. Western Blot analysis of RHEB expression in Raw 264.7 (Cat # L024V1).

 [Protocol Download](#)

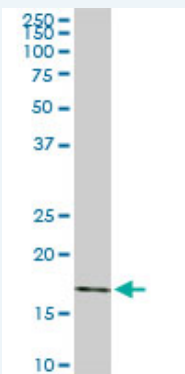
Western Blot (Cell lysate)



RHEB monoclonal antibody (M01), clone 2C11. Western Blot analysis of RHEB expression in Jurkat (Cat # L017V1).

 [Protocol Download](#)

Western Blot (Cell lysate)



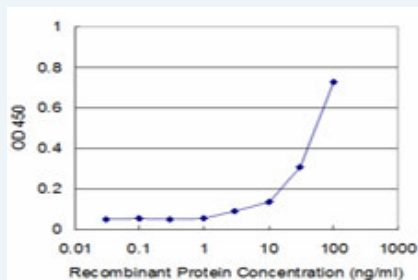
RHEB monoclonal antibody (M01), clone 2C11. Western Blot analysis of RHEB expression in NIH/3T3 (Cat # L018V1).

 [Protocol Download](#)


Western Blot (Recombinant protein)

 [Protocol Download](#)

Sandwich ELISA (Recombinant protein)



Detection limit for recombinant GST tagged RHEB is approximately 3ng/ml as a capture antibody.

 [Protocol Download](#)

ELISA

Gene Information

Entrez GeneID: [6009](#)

GeneBank [BC016155](#)
Accession#:

Protein [AAH16155](#)
Accession#:

Gene Name: RHEB

Gene Alias: MGC111559,RHEB2

Gene Description: Ras homolog enriched in brain

Omim ID: [601293](#)

Gene Ontology: [Hyperlink](#)

Gene Summary: This gene is a member of the small GTPase superfamily and encodes a lipid-anchored, cell membrane protein with five repeats of the RAS-related GTP-binding region. This protein is vital in regulation of growth and cell cycle progression due to its role in the insulin/TOR/S6K signaling pathway. The protein has GTPase activity and shuttles between a GDP-bound form and a GTP-bound form, and farnesylation of the protein is required for this activity. Three pseudogenes have been mapped, two on chromosome 10 and one on chromosome 22. [provided by RefSeq]

Other Designations: GTP-binding protein Rheb,Ras homolog enriched in brain 2

Gene Pathway

[Insulin signaling pathway](#) [mTOR signaling pathway](#)

Related Disease

[Genetic Predisposition to Disease](#) [Urinary Bladder Neoplasms](#)

