



SZABO SCANDIC

Part of Europa Biosite

Produktinformation



Forschungsprodukte & Biochemikalien



Zellkultur & Verbrauchsmaterial



Diagnostik & molekulare Diagnostik



Laborgeräte & Service

Weitere Information auf den folgenden Seiten!
See the following pages for more information!



Lieferung & Zahlungsart

siehe unsere [Liefer- und Versandbedingungen](#)

Zuschläge

- Mindermengenzuschlag
- Trockeneiszuschlag
- Gefahrgutzuschlag
- Expressversand

SZABO-SCANDIC HandelsgmbH

Quellenstraße 110, A-1100 Wien

T. +43(0)1 489 3961-0

F. +43(0)1 489 3961-7

mail@szabo-scandic.com

www.szabo-scandic.com

[linkedin.com/company/szaboscandic](https://www.linkedin.com/company/szaboscandic) 

RHEB monoclonal antibody (M05), clone 1E12

Catalog # : H00006009-M05

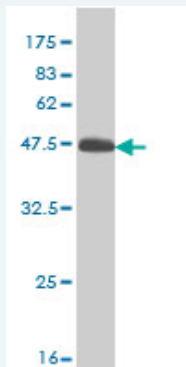
規格 : [100 ug]

[List All](#)

Specification

Product Description:	Mouse monoclonal antibody raised against a full length recombinant RHEB.
Immunogen:	RHEB (AAH16155, 1 a.a. ~ 184 a.a) full-length recombinant protein with GST tag. MW of the GST tag alone is 26 KDa.
Sequence:	MPQSKSRKIALGYRSVVGKSSLTIQFVEGQFVDSYDPTIENTFTKLITVNG QEYHLQLVDTAGQDEYSIFPQTYSIDINGYLVSYSIKSFEVIKVIHGKLL DMVGKVGQIPIMLVGNKDLHMERSVISYEEGKALAESWNAAFLESSAKENQ TAVDVFRRILEAEKMDGAASQGKSSCSVM
Host:	Mouse
Reactivity:	Human
Isotype:	IgG1 Kappa

Quality Control Testing: Antibody Reactive Against Recombinant Protein.



Western Blot detection against Immunogen (45.98 KDa) .

Storage Buffer: In 1x PBS, pH 7.4

Storage Instruction: Store at -20°C or lower. Aliquot to avoid repeated freezing and thawing.

MSDS: [Download](#)

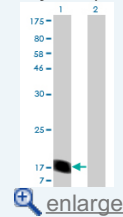
Datasheet: [Download](#)

Applications

Western Blot (Transfected lysate)

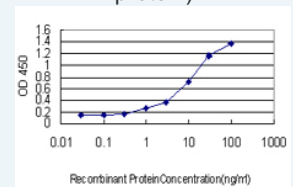
Application Image

Western Blot (Transfected lysate)

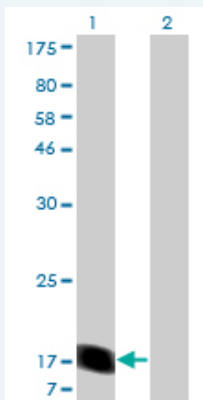


Western Blot (Recombinant protein)

Sandwich ELISA (Recombinant protein)



ELISA



Western Blot analysis of RHEB expression in transfected 293T cell line by RHEB monoclonal antibody (M05), clone 1E12.

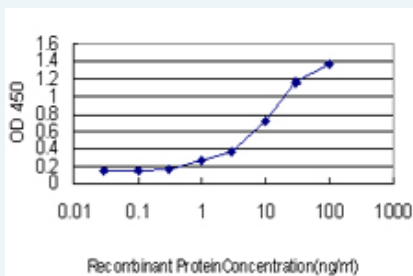
Lane 1: RHEB transfected lysate(20.5 KDa).
Lane 2: Non-transfected lysate.

[Protocol Download](#)

Western Blot (Recombinant protein)

[Protocol Download](#)

Sandwich ELISA (Recombinant protein)



Detection limit for recombinant GST tagged RHEB is approximately 0.1ng/ml as a capture antibody.

[Protocol Download](#)

ELISA

Gene Information

Entrez GeneID: [6009](#)

GeneBank [BC016155](#)
Accession#:

Protein [AAH16155](#)
Accession#:

Gene Name: RHEB

Gene Alias: MGC111559,RHEB2

Gene Description: Ras homolog enriched in brain

Omim ID: [601293](#)

Gene Ontology: [Hyperlink](#)

Gene Summary: This gene is a member of the small GTPase superfamily and encodes a lipid-anchored, cell membrane protein with five repeats of the RAS-related GTP-binding region. This protein is vital in regulation of growth and cell cycle progression due to its role in the insulin/TOR/S6K signaling pathway. The protein has GTPase activity and shuttles

between a GDP-bound form and a GTP-bound form, and farnesylation of the protein is required for this activity. Three pseudogenes have been mapped, two on chromosome 10 and one on chromosome 22. [provided by RefSeq]

Other Designations: GTP-binding protein Rheb,Ras homolog enriched in brain 2

Gene Pathway

[Insulin signaling pathway](#) [mTOR signaling pathway](#)

Related Disease

[Genetic Predisposition to Disease](#) [Urinary Bladder Neoplasms](#)

[服務條款](#) | [隱私權政策](#) | [著作及商標](#) | [網站地圖](#)

©2016 亞諾法生技股份有限公司 Abnova Corporation. 版權所有.