



SZABO SCANDIC

Part of Europa Biosite

Produktinformation



Forschungsprodukte & Biochemikalien



Zellkultur & Verbrauchsmaterial



Diagnostik & molekulare Diagnostik



Laborgeräte & Service

Weitere Information auf den folgenden Seiten!
See the following pages for more information!



Lieferung & Zahlungsart

siehe unsere [Liefer- und Versandbedingungen](#)

Zuschläge

- Mindermengenzuschlag
- Trockeneiszuschlag
- Gefahrgutzuschlag
- Expressversand

SZABO-SCANDIC HandelsgmbH

Quellenstraße 110, A-1100 Wien

T. +43(0)1 489 3961-0

F. +43(0)1 489 3961-7

mail@szabo-scandic.com

www.szabo-scandic.com

[linkedin.com/company/szaboscandic](https://www.linkedin.com/company/szaboscandic) 

GRK1 polyclonal antibody (A01)

Catalog # : H00006011-A01

規格 : [50 uL]

List All

Specification

Product Description: Mouse polyclonal antibody raised against a partial recombinant GRK1.

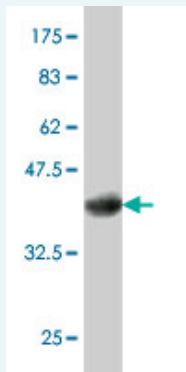
Immunogen: GRK1 (NP_002920.1, 51 a.a. ~ 150 a.a) partial recombinant protein with GST tag.

Sequence: RDSLSEFESVLCLEQPIGKKLFQQFLQSAEKHLPALWLDIEDYDTADN
DLQPQKAQTILAQYLDPAKLFCSFLDEGVAKFKEGPVEIQDGLFQPLL

Host: Mouse

Reactivity: Human

Quality Control Testing: Antibody Reactive Against Recombinant Protein.



Western Blot detection against Immunogen (37 KDa) .

Storage Buffer: 50 % glycerol

Storage Instruction: Store at -20°C or lower. Aliquot to avoid repeated freezing and thawing.

MSDS: [Download](#)

Datasheet: [Download](#)

Applications

Western Blot (Recombinant protein)

[Protocol Download](#)

ELISA

Gene Information

Entrez GeneID: [6011](#)

GeneBank Accession#: [NM_002929](#)

Application Image

Western Blot (Recombinant protein)

ELISA

Protein [NP_002920.1](#)

Accession#:

Gene Name: GRK1

Gene Alias: GPRK1,RHOK,RK

Gene G protein-coupled receptor kinase 1

Description:

Omim ID: [180381](#), [258100](#)

Gene Ontology: [Hyperlink](#)

Gene Summary: This gene encodes a member of the guanine nucleotide-binding protein (G protein)-coupled receptor kinase subfamily of the Ser/Thr protein kinase family. The protein phosphorylates rhodopsin and initiates its deactivation. Defects in GRK1 are known to cause Oguchi disease 2 (also known as stationary night blindness Oguchi type-2). [provided by RefSeq]

Other rhodopsin kinase

Designations:

Gene Pathway

[Chemokine signaling pathway](#) [Endocytosis](#)

[服務條款](#) | [隱私權政策](#) | [著作及商標](#) | [網站地圖](#)

©2016 亞諾法生技股份有限公司 Abnova Corporation. 版權所有.