



# SZABO SCANDIC

Part of Europa Biosite

## Produktinformation



Forschungsprodukte & Biochemikalien



Zellkultur & Verbrauchsmaterial



Diagnostik & molekulare Diagnostik



Laborgeräte & Service

Weitere Information auf den folgenden Seiten!  
See the following pages for more information!



### Lieferung & Zahlungsart

siehe unsere [Liefer- und Versandbedingungen](#)

### Zuschläge

- Mindermengenzuschlag
- Trockeneiszuschlag
- Gefahrgutzuschlag
- Expressversand

### SZABO-SCANDIC HandelsgmbH

Quellenstraße 110, A-1100 Wien

T. +43(0)1 489 3961-0

F. +43(0)1 489 3961-7

[mail@szabo-scandic.com](mailto:mail@szabo-scandic.com)

[www.szabo-scandic.com](http://www.szabo-scandic.com)

[linkedin.com/company/szaboscandic](https://www.linkedin.com/company/szaboscandic) 

## RLN1 MaxPab mouse polyclonal antibody (B01) MaxPab®

Catalog # : H00006013-B01

規格 : [ 50 uL ]

[List All](#)

### Specification

**Product Description:** Mouse polyclonal antibody raised against a full-length human RLN1 protein.

**Immunogen:** RLN1 (NP\_008842.1, 1 a.a. ~ 185 a.a) full-length human protein.

**Sequence:**  
 MPRLFLFHLLLEFCLLLNQFSRAVAAKWKDDVIKLCGRELVRAQIAICGMS  
 TWSKRSLSQEDAPQTPRPVAEIVPSFINKDTETIIIMLEFIANLPPELKAALS  
 ERQPSLPELQQYVPALKDSNLSFEFEFKKLIRNRQSEAADSNPSELKYLGL  
 DTHSQKKRRPYVALFEKCCLIGCTKRSLAKYC

**Host:** Mouse

**Reactivity:** Human

**Quality Control Testing:** Antibody reactive against mammalian transfected lysate.

**Storage Buffer:** No additive

**Storage Instruction:** Store at -20°C or lower. Aliquot to avoid repeated freezing and thawing.

**Note:** For IHC and IF applications, antibody purification with Protein A will be needed prior to use.

**MSDS:**  [Download](#)

**Datasheet:**  [Download](#)

### Application Image

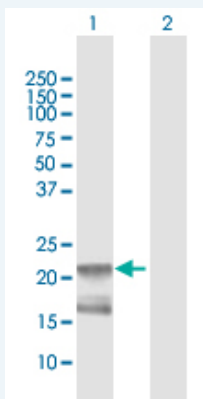
Western Blot (Transfected lysate)



 [enlarge](#)

### Applications


#### Western Blot (Transfected lysate)



Western Blot analysis of RLN1 expression in transfected 293T cell line (H00006013-T01) by RLN1 MaxPab polyclonal antibody.

Lane 1: RLN1 transfected lysate(20.35 KDa).

Lane 2: Non-transfected lysate.

 [Protocol Download](#)

## Gene Information

---

**Entrez GeneID:** [6013](#)

---

**GeneBank  
Accession#:** [NM\\_006911.2](#)

---

**Protein  
Accession#:** [NP\\_008842.1](#)

---

**Gene Name:** RLN1

---

**Gene Alias:** H1,RLXH1,bA12D24.3.1,bA12D24.3.2

---

**Gene  
Description:** relaxin 1

---

**Omim ID:** [179730](#)

---

**Gene Ontology:** [Hyperlink](#)

---

**Gene Summary:** Relaxins are known endocrine and autocrine/paracrine hormones, belonging to the insulin gene superfamily. In the human there are three non-allelic relaxin genes, RLN1, RLN2 and RLN3. RLN1 and RLN2 share high sequence homology. This encoded protein is synthesized as a single-chain polypeptide but the active form consists of an A chain and a B chain linked by disulfide bonds; however, their exact cleavage sites have not been described. Relaxin is produced by the ovary, and targets the mammalian reproductive system to ripen the cervix, elongate the pubic symphysis and inhibit uterine contraction. It may have additional roles in enhancing sperm motility, regulating blood pressure, controlling heart rate and releasing oxytocin and vasopressin. This gene has multiple polyadenylation sites. There are multiple alternatively spliced transcript variants described for this gene but their full length nature is not known yet. [provided by RefSeq]

---

**Other  
Designations:** OTTHUMP00000021026,preprorelaxin H1,prorelaxin,relaxin H1

---

## Related Disease

---

[Genetic Predisposition to Disease](#) [Premature Birth](#)