



SZABO SCANDIC

Part of Europa Biosite

Produktinformation



Forschungsprodukte & Biochemikalien



Zellkultur & Verbrauchsmaterial



Diagnostik & molekulare Diagnostik



Laborgeräte & Service

Weitere Information auf den folgenden Seiten!
See the following pages for more information!



Lieferung & Zahlungsart

siehe unsere [Liefer- und Versandbedingungen](#)

Zuschläge

- Mindermengenzuschlag
- Trockeneiszuschlag
- Gefahrgutzuschlag
- Expressversand

SZABO-SCANDIC HandelsgmbH

Quellenstraße 110, A-1100 Wien

T. +43(0)1 489 3961-0

F. +43(0)1 489 3961-7

mail@szabo-scandic.com

www.szabo-scandic.com

[linkedin.com/company/szaboscandic](https://www.linkedin.com/company/szaboscandic) 

RLN1 purified MaxPab rabbit polyclonal antibody (D01P) MaxPab®

Catalog # : H00006013-D01P

規格 : [100 ug]

[List All](#)

Specification

Product Description: Rabbit polyclonal antibody raised against a full-length human RLN1 protein.

Immunogen: RLN1 (NP_008842.1, 1 a.a. ~ 185 a.a) full-length human protein.

Sequence:
 MPRLFLFHLLLEFCLLLNQFSRAVAAKWKDDVIKLCGRELVRAQIAICGMS
 TWSKRSLSQEDAPQTPRPVAEIVPSFINKDTETIIIMLEFIANLPPELKAALS
 ERQPSPLELQQYVPALKDSNLSFEFEFKLIRNRQSEAADSNPSELKYLGL
 DTHSQKKRRPYVALFEKCCLIGCTKRSLAKYC

Host: Rabbit

Reactivity: Human

Quality Control Testing: Antibody reactive against mammalian transfected lysate.

Storage Buffer: In 1x PBS, pH 7.4

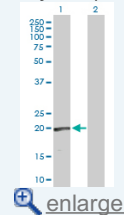
Storage Instruction: Store at -20°C or lower. Aliquot to avoid repeated freezing and thawing.

MSDS:  [Download](#)

Datasheet:  [Download](#)

Application Image

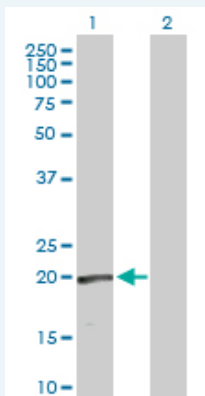
Western Blot (Transfected lysate)



 [enlarge](#)


Applications

Western Blot (Transfected lysate)



Western Blot analysis of RLN1 expression in transfected 293T cell line ([H00006013-T01](#)) by RLN1 MaxPab polyclonal antibody.

Lane 1: RLN1 transfected lysate(21.10 kDa).
 Lane 2: Non-transfected lysate.

 [Protocol Download](#)

Gene Information

Entrez GeneID: [6013](#)

**GeneBank
Accession#:** [NM_006911.2](#)

**Protein
Accession#:** [NP_008842.1](#)

Gene Name: RLN1

Gene Alias: H1,RLXH1,bA12D24.3.1,bA12D24.3.2

**Gene
Description:** relaxin 1

Omim ID: [179730](#)

Gene Ontology: [Hyperlink](#)

Gene Summary: Relaxins are known endocrine and autocrine/paracrine hormones, belonging to the insulin gene superfamily. In the human there are three non-allelic relaxin genes, RLN1, RLN2 and RLN3. RLN1 and RLN2 share high sequence homology. This encoded protein is synthesized as a single-chain polypeptide but the active form consists of an A chain and a B chain linked by disulfide bonds; however, their exact cleavage sites have not been described. Relaxin is produced by the ovary, and targets the mammalian reproductive system to ripen the cervix, elongate the pubic symphysis and inhibit uterine contraction. It may have additional roles in enhancing sperm motility, regulating blood pressure, controlling heart rate and releasing oxytocin and vasopressin. This gene has multiple polyadenylation sites. There are multiple alternatively spliced transcript variants described for this gene but their full length nature is not known yet. [provided by RefSeq]

**Other
Designations:** OTTHUMP00000021026,preprorelaxin H1,prorelaxin,relaxin H1

Related Disease

[Genetic Predisposition to Disease](#) [Premature Birth](#)