



SZABO SCANDIC

Part of Europa Biosite

Produktinformation



Forschungsprodukte & Biochemikalien



Zellkultur & Verbrauchsmaterial



Diagnostik & molekulare Diagnostik



Laborgeräte & Service

Weitere Information auf den folgenden Seiten!
See the following pages for more information!



Lieferung & Zahlungsart

siehe unsere [Liefer- und Versandbedingungen](#)

Zuschläge

- Mindermengenzuschlag
- Trockeneiszuschlag
- Gefahrgutzuschlag
- Expressversand

SZABO-SCANDIC HandelsgmbH

Quellenstraße 110, A-1100 Wien

T. +43(0)1 489 3961-0

F. +43(0)1 489 3961-7

mail@szabo-scandic.com

www.szabo-scandic.com

[linkedin.com/company/szaboscandic](https://www.linkedin.com/company/szaboscandic) 

RLN1 293T Cell Transient Overexpression Lysate(Denatured)

Catalog # : H00006013-T01

規格 : [100 uL]

[List All](#)

Specification

Transfected Cell Line: 293T

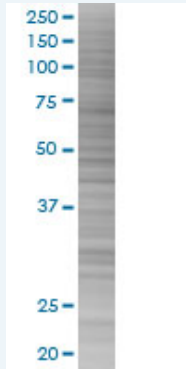
Plasmid: pCMV-RLN1 full-length

Host: Human

Theoretical MW (kDa): 21.1

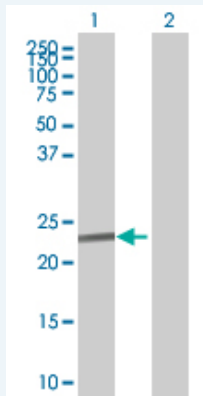
Quality Control Testing: Transient overexpression cell lysate was tested with Anti-RLN1 antibody (H00006013-B01) by Western Blots.

SDS-PAGE Gel



RLN1 transfected lysate.

Western Blot



Lane 1: RLN1 transfected lysate (21.1 KDa)

Lane 2: Non-transfected lysate.

Storage Buffer: 1X Sample Buffer (50 mM Tris-HCl, 2% SDS, 10% glycerol, 300 mM 2-mercaptoethanol, 0.01% Bromophenol blue)

Storage Instruction: Store at -80°C. Aliquot to avoid repeated freezing and thawing.

MSDS:  [Download](#)

Applications

Application Image

Western Blot

Western Blot

Gene Information

Entrez GeneID: [6013](#)

GeneBank Accession#: [NM_006911.2](#)

Protein Accession#: -

Gene Name: [RLN1](#)

Gene Alias: [H1,RLXH1,bA12D24.3.1,bA12D24.3.2](#)

Gene Description: [relaxin 1](#)

Omim ID: [179730](#)

Gene Ontology: [Hyperlink](#)

Gene Summary: Relaxins are known endocrine and autocrine/paracrine hormones, belonging to the insulin gene superfamily. In the human there are three non-allelic relaxin genes, RLN1, RLN2 and RLN3. RLN1 and RLN2 share high sequence homology. This encoded protein is synthesized as a single-chain polypeptide but the active form consists of an A chain and a B chain linked by disulfide bonds; however, their exact cleavage sites have not been described. Relaxin is produced by the ovary, and targets the mammalian reproductive system to ripen the cervix, elongate the pubic symphysis and inhibit uterine contraction. It may have additional roles in enhancing sperm motility, regulating blood pressure, controlling heart rate and releasing oxytocin and vasopressin. This gene has multiple polyadenylation sites. There are multiple alternatively spliced transcript variants described for this gene but their full length nature is not known yet. [provided by RefSeq]

Other Designations: [OTTHUMP00000021026,preprorelaxin H1,prorelaxin,relaxin H1](#)

Related Disease

[Genetic Predisposition to Disease](#) [Premature Birth](#)