



SZABO SCANDIC

Part of Europa Biosite

Produktinformation



Forschungsprodukte & Biochemikalien



Zellkultur & Verbrauchsmaterial



Diagnostik & molekulare Diagnostik



Laborgeräte & Service

Weitere Information auf den folgenden Seiten!
See the following pages for more information!



Lieferung & Zahlungsart

siehe unsere [Liefer- und Versandbedingungen](#)

Zuschläge

- Mindermengenzuschlag
- Trockeneiszuschlag
- Gefahrgutzuschlag
- Expressversand

SZABO-SCANDIC HandelsgmbH

Quellenstraße 110, A-1100 Wien

T. +43(0)1 489 3961-0

F. +43(0)1 489 3961-7

mail@szabo-scandic.com

www.szabo-scandic.com

[linkedin.com/company/szaboscandic](https://www.linkedin.com/company/szaboscandic) 



RIT2 MaxPab mouse polyclonal antibody (B01) MaxPab®

Catalog # : H00006014-B01

規格 : [50 uL]

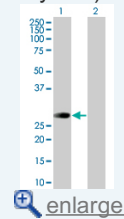
[List All](#)

Specification

Product Description:	Mouse polyclonal antibody raised against a full-length human RIT2 protein.
Immunogen:	RIT2 (NP_002921, 1 a.a. ~ 217 a.a) full-length human protein.
Sequence:	MEVENEASCSPGSASGGSREYKVVMLGAGGVGKSAMTMQFISHQFPD YHDPTIEDAYKTQVRIDNEPAYLDILDTAGQAEFTAMREQYMRGGEGFIIC YSVTDQRSFQEAAKFKELIFQVRHTYEIPLVLVGNKIDLEQFRQVSTEEG LSLAQEYNCGFFETSAALRFCIDDAFHGLVREIRKKESMPSLMEKKLKRK DSLWKKLKGSLKKKRENMT
Host:	Mouse
Reactivity:	Human
Quality Control Testing:	Antibody reactive against mammalian transfected lysate.
Storage Buffer:	No additive
Storage Instruction:	Store at -20°C or lower. Aliquot to avoid repeated freezing and thawing.
Note:	For IHC and IF applications, antibody purification with Protein A will be needed prior to use.
MSDS:	 Download
Datasheet:	 Download

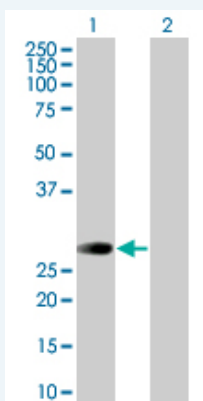
Application Image

Western Blot (Transfected lysate)



Applications


Western Blot (Transfected lysate)



Western Blot analysis of RIT2 expression in transfected 293T cell line (H00006014-T01) by RIT2 MaxPab polyclonal antibody.

Lane 1: RIT2 transfected lysate(23.87 KDa).

Lane 2: Non-transfected lysate.

 [Protocol Download](#)

Gene Information

Entrez GeneID: [6014](#)

GeneBank Accession#: [NM_002930](#)

Protein Accession#: [NP_002921](#)

Gene Name: RIT2

Gene Alias: RIBA,RIN,ROC2

Gene Description: Ras-like without CAAX 2

Omim ID: [609592](#)

Gene Ontology: [Hyperlink](#)

Gene Summary: RIN belongs to the RAS (HRAS; MIM 190020) superfamily of small GTPases (Shao et al., 1999 [PubMed 10545207]).[supplied by OMIM]

Other Designations: GTP-binding protein Roc2,Ric-like, expressed in neurons

Related Disease

[Genetic Predisposition to Disease](#) [Schizophrenia](#) [Tobacco Use Disorder](#)

[服務條款](#) | [隱私權政策](#) | [著作及商標](#) | [網站地圖](#)

©2016 亞諾法生技股份有限公司 Abnova Corporation. 版權所有.