



SZABO SCANDIC

Part of Europa Biosite

Produktinformation



Forschungsprodukte & Biochemikalien



Zellkultur & Verbrauchsmaterial



Diagnostik & molekulare Diagnostik



Laborgeräte & Service

Weitere Information auf den folgenden Seiten!
See the following pages for more information!



Lieferung & Zahlungsart

siehe unsere [Liefer- und Versandbedingungen](#)

Zuschläge

- Mindermengenzuschlag
- Trockeneiszuschlag
- Gefahrgutzuschlag
- Expressversand

SZABO-SCANDIC HandelsgmbH

Quellenstraße 110, A-1100 Wien

T. +43(0)1 489 3961-0

F. +43(0)1 489 3961-7

mail@szabo-scandic.com

www.szabo-scandic.com

[linkedin.com/company/szaboscandic](https://www.linkedin.com/company/szaboscandic) 

RIT2 monoclonal antibody (M01), clone 3F2

Catalog # : H00006014-M01

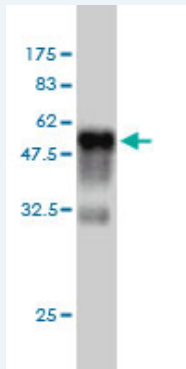
規格 : [100 ug]

[List All](#)

Specification

Product Description:	Mouse monoclonal antibody raised against a full length recombinant RIT2.
Immunogen:	RIT2 (AAH18060, 1 a.a. ~ 217 a.a) full-length recombinant protein with GST tag. MW of the GST tag alone is 26 KDa.
Sequence:	MEVENEASCSPGSASGGSREYKWMLGAGGVGKSAMTMQFISHQFPD YHDPTIEDAYKTQVRIDNEPAYLDILDITAGQAEFTAMREQYMRGGEGFIIC YSVTDRQSFQEAAKFKEIFQVRHTYEIPLVLVGNKIDLEQFRQVSTEEG LSLAQEYNCGFETSAALRFCIDDAFHGLVREIRKESMPSLMEKCLKRK DCLWKLLKGSLLKKRENMT
Host:	Mouse
Reactivity:	Human
Isotype:	IgG1 kappa

Quality Control Testing: Antibody Reactive Against Recombinant Protein.



Western Blot detection against Immunogen (49.61 KDa) .

Storage Buffer: In 1x PBS, pH 7.4

Storage Instruction: Store at -20°C or lower. Aliquot to avoid repeated freezing and thawing.

MSDS: [Download](#)

Datasheet: [Download](#)

Applications

Western Blot (Recombinant protein)

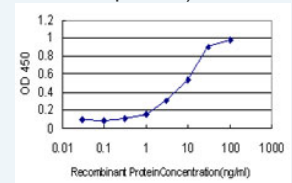
[Protocol Download](#)

Sandwich ELISA (Recombinant protein)

Application Image

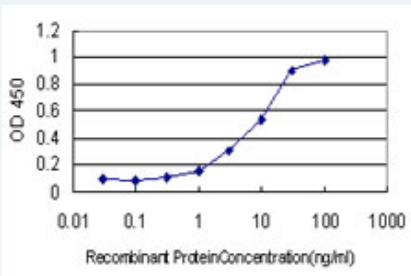
Western Blot (Recombinant protein)

Sandwich ELISA (Recombinant protein)



[enlarge](#)

ELISA



Detection limit for recombinant GST tagged RIT2 is approximately 0.3ng/ml as a capture antibody.

 [Protocol Download](#)

ELISA

Gene Information

Entrez GeneID: [6014](#)

GeneBank [BC018060](#)

Accession#:

Protein [AAH18060](#)

Accession#:

Gene Name: RIT2

Gene Alias: RIBA,RIN,ROC2

Gene Description: Ras-like without CAAX 2

Omim ID: [609592](#)

Gene Ontology: [Hyperlink](#)

Gene Summary: RIN belongs to the RAS (HRAS; MIM 190020) superfamily of small GTPases (Shao et al., 1999 [PubMed 10545207]).[supplied by OMIM]

Other Designations: GTP-binding protein Roc2,Ric-like, expressed in neurons

Related Disease

[Genetic Predisposition to Disease Schizophrenia Tobacco Use Disorder](#)

[服務條款](#) | [隱私權政策](#) | [著作及商標](#) | [網站地圖](#)

©2016 亞諾法生技股份有限公司 Abnova Corporation. 版權所有.