



SZABO SCANDIC

Part of Europa Biosite

Produktinformation



Forschungsprodukte & Biochemikalien



Zellkultur & Verbrauchsmaterial



Diagnostik & molekulare Diagnostik



Laborgeräte & Service

Weitere Information auf den folgenden Seiten!
See the following pages for more information!



Lieferung & Zahlungsart

siehe unsere [Liefer- und Versandbedingungen](#)

Zuschläge

- Mindermengenzuschlag
- Trockeneiszuschlag
- Gefahrgutzuschlag
- Expressversand

SZABO-SCANDIC HandelsgmbH

Quellenstraße 110, A-1100 Wien

T. +43(0)1 489 3961-0

F. +43(0)1 489 3961-7

mail@szabo-scandic.com

www.szabo-scandic.com

[linkedin.com/company/szaboscandic](https://www.linkedin.com/company/szaboscandic) 

RING1 MaxPab mouse polyclonal antibody (B01) MaxPab®

Catalog # : H00006015-B01

規格 : [50 uL]

[List All](#)

Specification

Product Description: Mouse polyclonal antibody raised against a full-length human RING1 protein.

Immunogen: RING1 (AAH02922, 1 a.a. ~ 377 a.a) full-length human protein.

Sequence:
 MDGTEIAVSPRSLHSELMCPICLDMLKNTMTTKECLHRFCSDCMTALRS
 GNKECPTCRKKL VSKRSLRPDPNFDALISKIYPSREEYEAHQDRVLIRLSR
 LHNQQALSSSIEEGLRMQAMHRAQRVRRPIPGSDQTTTMSGGEGEPGE
 GEGDGEDVSSDSAPDSAPGPAPKRPARGGGAGSSVGTGGGGTGGVG
 GGAGSEDSGDRGGTLGGGTGPPSPPGAPSPPEPGGEIELVFRPHLL
 VEKGEYCQTRYVKTTGNATVDHLSKYLALRIALERRQQQEAGEPGGPG
 GGASDTGGPDGCGGEGGGAGGGDGPEEPALPSLEGVSEKQYTYIAP
 GGGAF TTLNGSLTLELVNEKFWKVSRLPLELCYAPT KDPK

Host: Mouse

Reactivity: Human

Quality Control Testing: Antibody reactive against mammalian transfected lysate.

Storage Buffer: No additive

Storage Instruction: Store at -20°C or lower. Aliquot to avoid repeated freezing and thawing.

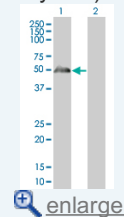
Note: For IHC and IF applications, antibody purification with Protein A will be needed prior to use.


MSDS:  [Download](#)

Datasheet:  [Download](#)

Application Image

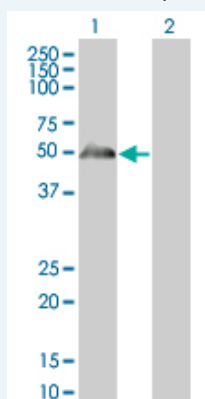
Western Blot (Transfected lysate)



 [enlarge](#)

Applications

Western Blot (Transfected lysate)



Western Blot analysis of RING1 expression in transfected 293T cell line ([H00006015-T01](#)) by RING1 MaxPab polyclonal antibody.

Lane 1: RING1 transfected lysate(41.47 KDa).

Gene Information

Entrez GeneID: [6015](#)

GeneBank Accession#: [BC002922](#)

Protein Accession#: [AAH02922](#)

Gene Name: RING1

Gene Alias: RING1A,RNF1

Gene Description: ring finger protein 1

Omim ID: [602045](#)

Gene Ontology: [Hyperlink](#)

Gene Summary: This gene belongs to the RING finger family, members of which encode proteins characterized by a RING domain, a zinc-binding motif related to the zinc finger domain. The gene product can bind DNA and can act as a transcriptional repressor. It is associated with the multimeric polycomb group protein complex. The gene product interacts with the polycomb group proteins BMI1, EDR1, and CBX4, and colocalizes with these proteins in large nuclear domains. It interacts with the CBX4 protein via its glycine-rich C-terminal domain. The gene maps to the HLA class II region, where it is contiguous with the RING finger genes FABGL and HKE4. [provided by RefSeq]

Other Designations: OTTHUMP00000029416

Related Disease

[Carcinoma, Renal Cell](#) [Cardiovascular Diseases](#) [Diabetes Mellitus, Type 1](#)
[Diabetes Mellitus, Type 2](#) [Edema](#) [Genetic Predisposition to Disease](#)
[Head and Neck Neoplasms](#) [Kidney Neoplasms](#) [Lupus Erythematosus, Systemic](#)
[Neoplasm Recurrence, Local](#) [Neoplasms, Second Primary](#)