



SZABO SCANDIC

Part of Europa Biosite

Produktinformation



Forschungsprodukte & Biochemikalien



Zellkultur & Verbrauchsmaterial



Diagnostik & molekulare Diagnostik



Laborgeräte & Service

Weitere Information auf den folgenden Seiten!
See the following pages for more information!



Lieferung & Zahlungsart

siehe unsere [Liefer- und Versandbedingungen](#)

Zuschläge

- Mindermengenzuschlag
- Trockeneiszuschlag
- Gefahrgutzuschlag
- Expressversand

SZABO-SCANDIC HandelsgmbH

Quellenstraße 110, A-1100 Wien

T. +43(0)1 489 3961-0

F. +43(0)1 489 3961-7

mail@szabo-scandic.com

www.szabo-scandic.com

[linkedin.com/company/szaboscandic](https://www.linkedin.com/company/szaboscandic) 

RLBP1 purified MaxPab rabbit polyclonal antibody (D01P) MaxPab®

Catalog # : H00006017-D01P

規格 : [100 ug]

[List All](#)

Specification

Product Description: Rabbit polyclonal antibody raised against a full-length human RLBP1 protein.

Immunogen: RLBP1 (NP_000317.1, 1 a.a. ~ 317 a.a) full-length human protein.

Sequence:
 MSEGVTFRM/PEEEEQLRAQLEQLTTKDHGPVFGPCSQLPRHTLQK
 AKDELNEREETREEAVRELQEMVQAQAASGEELAVAVAERVQEKDSGF
 FLRFIRARKFNVGRAYELLRGYVNFRLQYPELFDLSPEAVRCTIEAGYP
 GVLSSRDKYGRVVMLFNENWQSQEITFDEILQAYCFILEKLENEETQIN
 GFCIENFKGFTMQQAASLRTSDLRKMDMLQDSFPARFKAIHFHQPWY
 FTTTYNVVKPFLKSKLLERVVHGDDLSGFYQEIDENILPSDFGGTLPKY
 DGKAVAEQLFGPQAQAENTAF

Host: Rabbit

Reactivity: Human

Quality Control Testing: Antibody reactive against mammalian transfected lysate.

Storage Buffer: In 1x PBS, pH 7.4

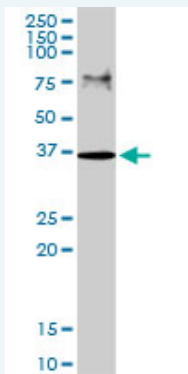
Storage Instruction: Store at -20°C or lower. Aliquot to avoid repeated freezing and thawing.

MSDS:  [Download](#)

Datasheet:  [Download](#)

Applications

Western Blot (Cell lysate)



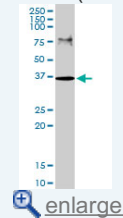
RLBP1 MaxPab rabbit polyclonal antibody. Western Blot analysis of RLBP1 expression in HeLa.

 [Protocol Download](#)

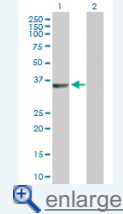
Western Blot (Transfected lysate)

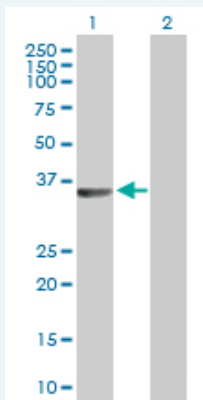
Application Image

Western Blot (Cell lysate)



Western Blot (Transfected lysate)





Western Blot analysis of RLBP1 expression in transfected 293T cell line ([H00006017-T01](#)) by RLBP1 MaxPab polyclonal antibody.

Lane 1: RLBP1 transfected lysate(36.50 KDa).
Lane 2: Non-transfected lysate.

 [Protocol Download](#)

Gene Information

Entrez GeneID: [6017](#)

GeneBank Accession#: [NM_000326.3](#)

Protein Accession#: [NP_000317.1](#)

Gene Name: RLBP1

Gene Alias: CRALBP,MGC3663

Gene Description: retinaldehyde binding protein 1

Omim ID: [136880](#), [180090](#), [268000](#), [607475](#), [607476](#)

Gene Ontology: [Hyperlink](#)

Gene Summary: The protein encoded by this gene is a 36-kD water-soluble protein which carries 11-cis-retinaldehyde or 11-cis-retinal as physiologic ligands. It may be a functional component of the visual cycle. Mutations of this gene have been associated with severe rod-cone dystrophy, Bothnia dystrophy (nonsyndromic autosomal recessive retinitis pigmentosa) and retinitis punctata albescens. [provided by RefSeq]

Other Designations: cellular retinaldehyde-binding protein-1,retinaldehyde-binding protein 1

Related Disease

[Retinal Diseases](#) [Retinitis Pigmentosa](#)