



# SZABO SCANDIC

Part of Europa Biosite

## Produktinformation



Forschungsprodukte & Biochemikalien



Zellkultur & Verbrauchsmaterial



Diagnostik & molekulare Diagnostik



Laborgeräte & Service

Weitere Information auf den folgenden Seiten!  
See the following pages for more information!



### Lieferung & Zahlungsart

siehe unsere [Liefer- und Versandbedingungen](#)

### Zuschläge

- Mindermengenzuschlag
- Trockeneiszuschlag
- Gefahrgutzuschlag
- Expressversand

### SZABO-SCANDIC HandelsgmbH

Quellenstraße 110, A-1100 Wien

T. +43(0)1 489 3961-0

F. +43(0)1 489 3961-7

[mail@szabo-scandic.com](mailto:mail@szabo-scandic.com)

[www.szabo-scandic.com](http://www.szabo-scandic.com)

[linkedin.com/company/szaboscandic](https://www.linkedin.com/company/szaboscandic) 

## RLBP1 monoclonal antibody (M01), clone 1H7

Catalog # : H00006017-M01

規格 : [ 100 ug ]

[List All](#)

### Specification

**Product Description:** Mouse monoclonal antibody raised against a full length recombinant RLBP1.

**Immunogen:** RLBP1 (AAH04199, 1 a.a. ~ 317 a.a) full-length recombinant protein with GST tag. MW of the GST tag alone is 26 KDa.

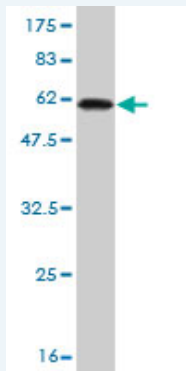
**Sequence:**  
 MSEGVTFRMVPEEEQELRAQLEQLTTKDHGVPVFGPCSQLPRHTLQK  
 AKDELNEREETREEAVRELQEMVQAQAASGEELAVAVAERVQEKDSGF  
 FLRFIRARKFNVGRAYELLRGYVNFRLQYPELFDLSPEAVRCTIEAGYP  
 GVLSSRDKYGRVMLFNENWQSQEITFDEILQAYCFILEKLLENEETQIN  
 GFCIIENFKGFTMQQAASLRTSDLRKMDMLQDSFPARFKAIHFHQWPY  
 FTTTYNVKPFKSKLLERVFVHGDDLSGFYQEIDENILPSDFGGTLPKY  
 DGKAVAEQLFGPQAQAENTAF

**Host:** Mouse

**Reactivity:** Human

**Isotype:** IgG2a Kappa

**Quality Control Testing:** Antibody Reactive Against Recombinant Protein.



Western Blot detection against Immunogen (60.61 KDa) .

**Storage Buffer:** In 1x PBS, pH 7.4

**Storage Instruction:** Store at -20°C or lower. Aliquot to avoid repeated freezing and thawing.

**MSDS:** [Download](#)

**Datasheet:** [Download](#)

### Applications

**Western Blot (Recombinant protein)**

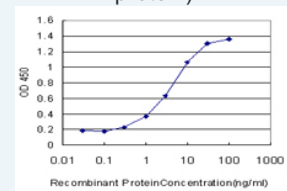
[Protocol Download](#)

**Sandwich ELISA (Recombinant protein)**

### Application Image

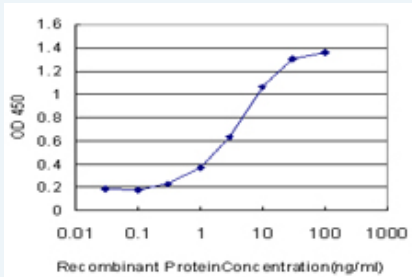
Western Blot (Recombinant protein)

Sandwich ELISA (Recombinant protein)



[enlarge](#)

ELISA



Detection limit for recombinant GST tagged RLBP1 is approximately 0.3ng/ml as a capture antibody.

 [Protocol Download](#)

## ELISA

### Gene Information

Entrez GeneID: [6017](#)

GeneBank [BC004199](#)

Accession#:

Protein [AAH04199](#)

Accession#:

Gene Name: RLBP1

Gene Alias: CRALBP, MGC3663

Gene Description: retinaldehyde binding protein 1

Omim ID: [136880](#), [180090](#), [268000](#), [607475](#), [607476](#)

Gene Ontology: [Hyperlink](#)

**Gene Summary:** The protein encoded by this gene is a 36-kD water-soluble protein which carries 11-cis-retinaldehyde or 11-cis-retinal as physiologic ligands. It may be a functional component of the visual cycle. Mutations of this gene have been associated with severe rod-cone dystrophy, Bothnia dystrophy (nonsyndromic autosomal recessive retinitis pigmentosa) and retinitis punctata albescens. [provided by RefSeq]

**Other Designations:** cellular retinaldehyde-binding protein-1, retinaldehyde-binding protein 1

### Related Disease

[Retinal Diseases](#) [Retinitis Pigmentosa](#)