



SZABO SCANDIC

Part of Europa Biosite

Produktinformation



Forschungsprodukte & Biochemikalien



Zellkultur & Verbrauchsmaterial



Diagnostik & molekulare Diagnostik



Laborgeräte & Service

Weitere Information auf den folgenden Seiten!
See the following pages for more information!



Lieferung & Zahlungsart

siehe unsere [Liefer- und Versandbedingungen](#)

Zuschläge

- Mindermengenzuschlag
- Trockeneiszuschlag
- Gefahrgutzuschlag
- Expressversand

SZABO-SCANDIC HandelsgmbH

Quellenstraße 110, A-1100 Wien

T. +43(0)1 489 3961-0

F. +43(0)1 489 3961-7

mail@szabo-scandic.com

www.szabo-scandic.com

[linkedin.com/company/szaboscandic](https://www.linkedin.com/company/szaboscandic) 

RLBP1 monoclonal antibody (M02), clone 4H5

Catalog # : H00006017-M02

規格 : [100 ug]

[List All](#)

Specification

Product Description: Mouse monoclonal antibody raised against a full length recombinant RLBP1.

Immunogen: RLBP1 (AAH04199, 1 a.a. ~ 317 a.a) full-length recombinant protein with GST tag. MW of the GST tag alone is 26 KDa.

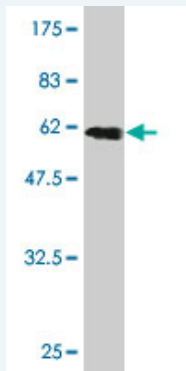
Sequence:
 MSEGVTFRMVPPEEEQELRAQLEQLTTKDHGPVFGPCSQLPRHTLQK
 AKDELNEREETREEAVRELQEMVQAQAASGEELAVAVAERVQEKDSGF
 FLRFIRARKFNVGRAYELLRGYVNFRLQYPELFDLSPEAVRCTIEAGYP
 GVLSSRDKYGRVMLFNENWQSQEITFDEILQAYCFILEKLLENEETQIN
 GFCIENFKGFTMQQAASLRSDLRKMDMLQDSFPARFKAIHFHQWPY
 FTTTYNVVKPFLKSKLLERFVHGDDLSGFYQEIDENILPSDFGGTLPKY
 DGKAVAEQLFGPQAQAENTAF

Host: Mouse

Reactivity: Human

Isotype: IgG1 kappa

Quality Control Testing: Antibody Reactive Against Recombinant Protein.



Western Blot detection against Immunogen (60.61 KDa) .

Storage Buffer: In 1x PBS, pH 7.4

Storage Instruction: Store at -20°C or lower. Aliquot to avoid repeated freezing and thawing.

MSDS: [Download](#)

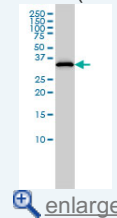
Datasheet: [Download](#)

Applications

Western Blot (Cell lysate)

Application Image

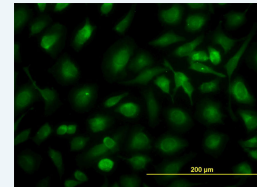
Western Blot (Cell lysate)



[enlarge](#)

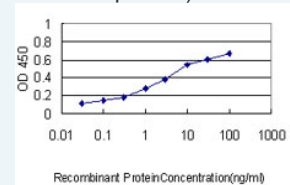
Western Blot (Recombinant protein)

Immunofluorescence



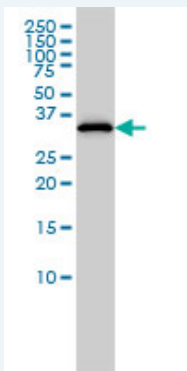
[enlarge](#)

Sandwich ELISA (Recombinant protein)



[enlarge](#)

ELISA



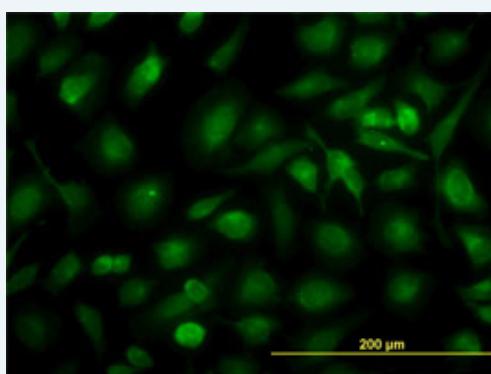
RLBP1 monoclonal antibody (M02), clone 4H5 Western Blot analysis of RLBP1 expression in HepG2 (Cat # L019V1).

[Protocol Download](#)

Western Blot (Recombinant protein)

[Protocol Download](#)

Immunofluorescence

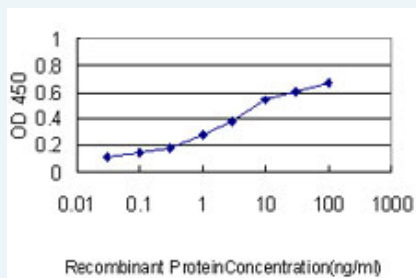


[enlarge this image](#)

Immunofluorescence of monoclonal antibody to RLBP1 on HeLa cell. [antibody concentration 20 ug/ml]

[Protocol Download](#)

Sandwich ELISA (Recombinant protein)



Detection limit for recombinant GST tagged RLBP1 is approximately 0.1ng/ml as a capture antibody.

[Protocol Download](#)

ELISA

Gene Information

Entrez GeneID: [6017](#)

GeneBank [BC004199](#)
Accession#:

Protein [AAH04199](#)
Accession#:

Gene Name: RLBP1

Gene Alias: CRALBP, MGC3663

Gene retinaldehyde binding protein 1

Description:

Omim ID: [136880](#), [180090](#), [268000](#), [607475](#), [607476](#)

Gene Ontology: [Hyperlink](#)

Gene Summary: The protein encoded by this gene is a 36-kD water-soluble protein which carries 11-cis-retinaldehyde or 11-cis-retinal as physiologic ligands. It may be a functional component of the visual cycle. Mutations of this gene have been associated with severe rod-cone dystrophy, Bothnia dystrophy (nonsyndromic autosomal recessive retinitis pigmentosa) and retinitis punctata albescens. [provided by RefSeq]

Other Designations: cellular retinaldehyde-binding protein-1,retinaldehyde-binding protein 1

Related Disease

[Retinal Diseases](#) [Retinitis Pigmentosa](#)

[服務條款](#) | [隱私權政策](#) | [著作及商標](#) | [網站地圖](#)

©2016 亞諾法生技股份有限公司 Abnova Corporation. 版權所有.