



SZABO SCANDIC

Part of Europa Biosite

Produktinformation



Forschungsprodukte & Biochemikalien



Zellkultur & Verbrauchsmaterial



Diagnostik & molekulare Diagnostik



Laborgeräte & Service

Weitere Information auf den folgenden Seiten!
See the following pages for more information!



Lieferung & Zahlungsart

siehe unsere [Liefer- und Versandbedingungen](#)

Zuschläge

- Mindermengenzuschlag
- Trockeneiszuschlag
- Gefahrgutzuschlag
- Expressversand

SZABO-SCANDIC HandelsgmbH

Quellenstraße 110, A-1100 Wien

T. +43(0)1 489 3961-0

F. +43(0)1 489 3961-7

mail@szabo-scandic.com

www.szabo-scandic.com

[linkedin.com/company/szaboscandic](https://www.linkedin.com/company/szaboscandic) 

RLF monoclonal antibody (M05), clone 2G2

Catalog # : H00006018-M05

規格 : [100 ug]

[List All](#)

Specification

Product Description: Mouse monoclonal antibody raised against a partial recombinant RLF.

Immunogen: RLF (NP_036553.1, 1805 a.a. ~ 1913 a.a) partial recombinant protein with GST tag. MW of the GST tag alone is 26 KDa.

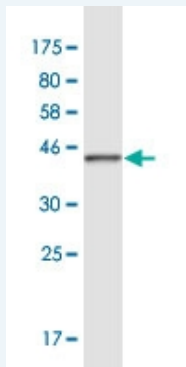
Sequence: SNDLTGNVVANNMVDNSEPEVDIPHSSSDSTIHENLTAIPPLIVAETTTVPS
LENLRVLDKALTDGELALKQLHYLRPVVVLERSKFSTPILDLFPTKKTDELCVGS

Host: Mouse

Reactivity: Human

Isotype: IgG2a Kappa

Quality Control Testing: Antibody Reactive Against Recombinant Protein.



Western Blot detection against Immunogen (37.73 KDa) .

Storage Buffer: In 1x PBS, pH 7.4

Storage Instruction: Store at -20°C or lower. Aliquot to avoid repeated freezing and thawing.

MSDS: [Download](#)

Datasheet: [Download](#)

Publication Reference

1. An ENU mutagenesis screen identifies novel and known genes involved in epigenetic processes in the mouse. Daxinger L, Harten SK, Oey H, Epp T, Isbel L, Huang E, Whitelaw N, Apedaile A, Sorolla A, Yong J, Bharti V, Sutton J, Ashe A, Pang Z, Wallace N, Gerhardt DJ, Blewitt ME, Jeddloh JA, Whitelaw E. *Genome Biol.* 2013 Sep 11;14(9):R96.

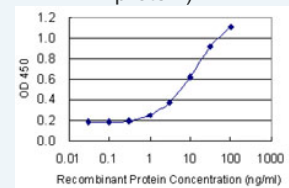
Applications

Western Blot (Recombinant protein)

Application Image

Western Blot (Recombinant protein)

Sandwich ELISA (Recombinant protein)

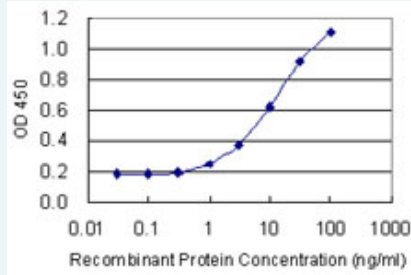


[enlarge](#)

ELISA

[Protocol Download](#)

Sandwich ELISA (Recombinant protein)



Detection limit for recombinant GST tagged RLF is 0.3 ng/ml as a capture antibody.

 [Protocol Download](#)

ELISA

Gene Information

Entrez GeneID: [6018](#)

GeneBank [NM_012421](#)

Accession#:

Protein [NP_036553.1](#)

Accession#:

Gene Name: RLF

Gene Alias: MGC142226,ZN-15L,ZNF292L

Gene Description: rearranged L-myc fusion

Description:

Omim ID: [180610](#)

Gene Ontology: [Hyperlink](#)

Other Designations: OTTHUMP00000006395,Zn-15 related,rearranged L-myc fusion

sequence

[服務條款](#) | [隱私權政策](#) | [著作及商標](#) | [網站地圖](#)

©2016 亞諾法生技股份有限公司 Abnova Corporation. 版權所有.