



# SZABO SCANDIC

Part of Europa Biosite

## Produktinformation



Forschungsprodukte & Biochemikalien



Zellkultur & Verbrauchsmaterial



Diagnostik & molekulare Diagnostik



Laborgeräte & Service

Weitere Information auf den folgenden Seiten!  
See the following pages for more information!



### Lieferung & Zahlungsart

siehe unsere [Liefer- und Versandbedingungen](#)

### Zuschläge

- Mindermengenzuschlag
- Trockeneiszuschlag
- Gefahrgutzuschlag
- Expressversand

### SZABO-SCANDIC HandelsgmbH

Quellenstraße 110, A-1100 Wien

T. +43(0)1 489 3961-0

F. +43(0)1 489 3961-7

[mail@szabo-scandic.com](mailto:mail@szabo-scandic.com)

[www.szabo-scandic.com](http://www.szabo-scandic.com)

[linkedin.com/company/szaboscandic](https://www.linkedin.com/company/szaboscandic) 

# RNASE2 purified MaxPab rabbit polyclonal antibody (D01P) MaxPab®

Catalog # : H00006036-D01P

規格 : [ 100 ug ]

[List All](#)

## Specification

**Product Description:** Rabbit polyclonal antibody raised against a full-length human RNASE2 protein.

**Immunogen:** RNASE2 (NP\_002925.1, 1 a.a. ~ 161 a.a) full-length human protein.

**Sequence:**  
 MVPKLFTSQICLLLLLGLLAVEGSLHVKPPQFTWAQWFETQHINMTSQQ  
 CTNAMQVINNYQRRCKNQNTFLLTFANVNVCGNPMTCPNKRKNC  
 HHSGSQVPLIHCNLTTPSPQNISNCRYAQTANMFYVACDNRDQRRDPP  
 QYPWVPVHLDRII

**Host:** Rabbit

**Reactivity:** Human

**Quality Control Testing:** Antibody reactive against mammalian transfected lysate.

**Storage Buffer:** In 1x PBS, pH 7.4

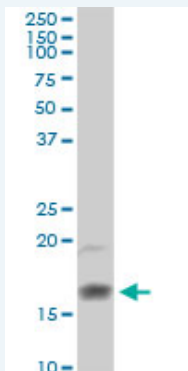
**Storage Instruction:** Store at -20°C or lower. Aliquot to avoid repeated freezing and thawing.

**MSDS:**  [Download](#)

**Datasheet:**  [Download](#)

## Applications

### Western Blot (Tissue lysate)



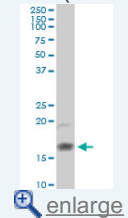
RNASE2 MaxPab rabbit polyclonal antibody. Western Blot analysis of RNASE2 expression in human spleen.

 [Protocol Download](#)

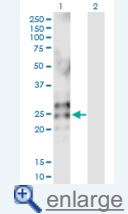
### Western Blot (Transfected lysate)

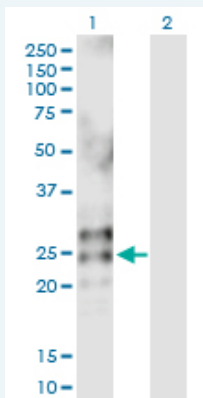
## Application Image

### Western Blot (Tissue lysate)



### Western Blot (Transfected lysate)





Western Blot analysis of RNASE2 expression in transfected 293T cell line ([H00006036-T01](#)) by RNASE2 MaxPab polyclonal antibody.

Lane 1: RNASE2 transfected lysate(18.40 KDa).  
Lane 2: Non-transfected lysate.

 [Protocol Download](#)

### Gene Information

**Entrez GeneID:** [6036](#)

**GeneBank Accession#:** [NM\\_002934.2](#)

**Protein Accession#:** [NP\\_002925.1](#)

**Gene Name:** RNASE2

**Gene Alias:** EDN,RNS2

**Gene Description:** ribonuclease, RNase A family, 2 (liver, eosinophil-derived neurotoxin)

**Omim ID:** [131410](#)

**Gene Ontology:** [Hyperlink](#)

**Other Designations:** -

### Related Disease

[Dermatitis, Atopic](#) [Filariasis](#) [Pulmonary Eosinophilia](#)