



SZABO SCANDIC

Part of Europa Biosite

Produktinformation



Forschungsprodukte & Biochemikalien



Zellkultur & Verbrauchsmaterial



Diagnostik & molekulare Diagnostik



Laborgeräte & Service

Weitere Information auf den folgenden Seiten!
See the following pages for more information!



Lieferung & Zahlungsart

siehe unsere [Liefer- und Versandbedingungen](#)

Zuschläge

- Mindermengenzuschlag
- Trockeneiszuschlag
- Gefahrgutzuschlag
- Expressversand

SZABO-SCANDIC HandelsgmbH

Quellenstraße 110, A-1100 Wien

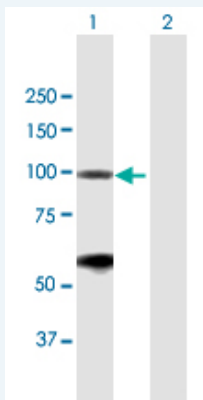
T. +43(0)1 489 3961-0

F. +43(0)1 489 3961-7

mail@szabo-scandic.com

www.szabo-scandic.com

[linkedin.com/company/szaboscandic](https://www.linkedin.com/company/szaboscandic) 

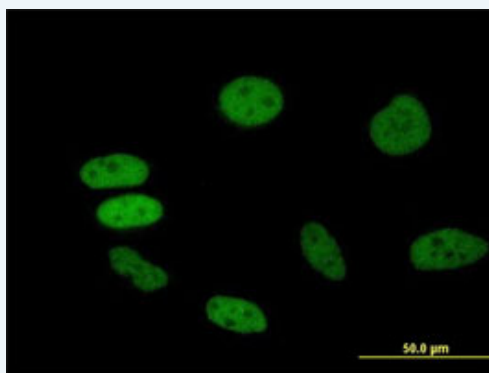


Western Blot analysis of BRD2 expression in transfected 293T cell line ([H00006046-T01](#)) by BRD2 MaxPab polyclonal antibody.

Lane 1: BRD2 transfected lysate(88.11 KDa).
Lane 2: Non-transfected lysate.

[Protocol Download](#)

Immunofluorescence



enlarge this image

Immunofluorescence of purified MaxPab antibody to BRD2 on HeLa cell. [antibody concentration 10 ug/ml]

[Protocol Download](#)

Gene Information

Entrez GeneID: [6046](#)

GeneBank Accession#: [NM_005104.2](#)

Protein Accession#: [NP_005095.1](#)

Gene Name: BRD2

Gene Alias: D6S113E,DKFZp686N0336,FLJ31942,FSH,FSRG1,KIAA9001,NAT,RING3,RNF3

Gene Description: bromodomain containing 2

Omim ID: [601540](#)

Gene Ontology: [Hyperlink](#)

Gene Summary: This gene encodes a transcriptional regulator that belongs to the BET (bromodomains and extra terminal domain) family of proteins. This protein associates with transcription complexes and with acetylated chromatin during mitosis, and it selectively binds to the acetylated lysine-12 residue of histone H4 via its two bromodomains. The gene maps to the major histocompatibility complex (MHC) class II region on chromosome 6p21.3, but sequence comparison suggests that the

protein is not involved in the immune response. This gene has been implicated in juvenile myoclonic epilepsy, a common form of epilepsy that becomes apparent in adolescence. Multiple alternatively spliced variants have been described for this gene, but the full-length nature of some of these variants has not been determined. [provided by RefSeq

Other OTTHUMP00000029350,bromodomain-containing 2,female sterile
Designations: homeotic-related gene 1

Related Disease

[Abortion, Spontaneous](#) [Alzheimer Disease](#) [Alzheimer disease](#) [Cerebral Amyloid Angiopathy](#)
[Epilepsy Genetic Predisposition to Disease](#) [Lupus Erythematosus, Systemic](#)
[Myoclonic Epilepsy, Juvenile](#) [Neuroblastoma](#) [Oligospermia](#) [Photosensitivity Disorders](#)

[服務條款](#) | [隱私權政策](#) | [著作及商標](#) | [網站地圖](#)

©2016 亞諾法生技股份有限公司 Abnova Corporation. 版權所有.