



# SZABO SCANDIC

Part of Europa Biosite

## Produktinformation



Forschungsprodukte & Biochemikalien



Zellkultur & Verbrauchsmaterial



Diagnostik & molekulare Diagnostik



Laborgeräte & Service

Weitere Information auf den folgenden Seiten!  
See the following pages for more information!



### Lieferung & Zahlungsart

siehe unsere [Liefer- und Versandbedingungen](#)

### Zuschläge

- Mindermengenzuschlag
- Trockeneiszuschlag
- Gefahrgutzuschlag
- Expressversand

### SZABO-SCANDIC HandelsgmbH

Quellenstraße 110, A-1100 Wien

T. +43(0)1 489 3961-0

F. +43(0)1 489 3961-7

[mail@szabo-scandic.com](mailto:mail@szabo-scandic.com)

[www.szabo-scandic.com](http://www.szabo-scandic.com)

[linkedin.com/company/szaboscandic](https://www.linkedin.com/company/szaboscandic) 

## RNPEP polyclonal antibody (A01)

Catalog # : H00006051-A01

規格 : [ 50 uL ]

List All

### Specification

**Product Description:** Mouse polyclonal antibody raised against a partial recombinant RNPEP.

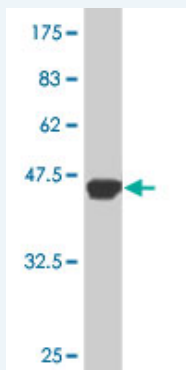
**Immunogen:** RNPEP (NP\_064601, 551 a.a. ~ 650 a.a) partial recombinant protein with GST tag.

**Sequence:** GNVKKLGDTYPSISNARNAELRLRWGQIVLKNHQEDFWKVKEFLHNQG KQKYTLPLYHAMMGSEVAQTLAKETFASTASQLHSNVVNYVQQIVAPK GS

**Host:** Mouse

**Reactivity:** Human

**Quality Control Testing:** Antibody Reactive Against Recombinant Protein.



Western Blot detection against Immunogen (37.11 kDa) .

**Storage Buffer:** 50 % glycerol

**Storage Instruction:** Store at -20°C or lower. Aliquot to avoid repeated freezing and thawing.

**MSDS:** [Download](#)

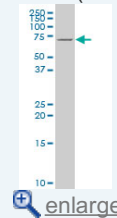
**Datasheet:** [Download](#)

### Applications

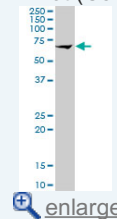
Western Blot (Cell lysate)

### Application Image

Western Blot (Cell lysate)

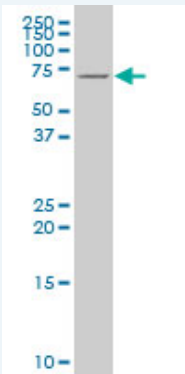


Western Blot (Cell lysate)



Western Blot (Recombinant protein)

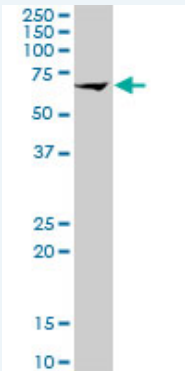
ELISA



RNPEP polyclonal antibody (A01), Lot # 061101JCS1 Western Blot analysis of RNPEP expression in C32 ( Cat # L002V1 ).

 [Protocol Download](#)

#### Western Blot (Cell lysate)



RNPEP polyclonal antibody (A01), Lot # 061101JCS1. Western Blot analysis of RNPEP expression in K-562.

 [Protocol Download](#)

#### Western Blot (Recombinant protein)

 [Protocol Download](#)

#### ELISA

#### Gene Information

**Entrez GeneID:** [6051](#)

**GeneBank Accession#:** [NM\\_020216](#)

**Protein Accession#:** [NP\\_064601](#)

**Gene Name:** RNPEP

**Gene Alias:** DKFZp547H084

**Gene Description:** arginyl aminopeptidase (aminopeptidase B)

**Omim ID:** [602675](#)

**Gene Ontology:** [Hyperlink](#)

**Other Designations:** OTTHUMP00000034046,aminopeptidase B

