



# SZABO SCANDIC

Part of Europa Biosite

## Produktinformation



Forschungsprodukte & Biochemikalien



Zellkultur & Verbrauchsmaterial



Diagnostik & molekulare Diagnostik



Laborgeräte & Service

Weitere Information auf den folgenden Seiten!  
See the following pages for more information!



### Lieferung & Zahlungsart

siehe unsere [Liefer- und Versandbedingungen](#)

### Zuschläge

- Mindermengenzuschlag
- Trockeneiszuschlag
- Gefahrgutzuschlag
- Expressversand

### SZABO-SCANDIC HandelsgmbH

Quellenstraße 110, A-1100 Wien

T. +43(0)1 489 3961-0

F. +43(0)1 489 3961-7

[mail@szabo-scandic.com](mailto:mail@szabo-scandic.com)

[www.szabo-scandic.com](http://www.szabo-scandic.com)

[linkedin.com/company/szaboscandic](https://www.linkedin.com/company/szaboscandic) 

## RNPEP purified MaxPab rabbit polyclonal antibody (D01P) MaxPab®

Catalog # : H00006051-D01P

規格 : [ 100 ug ]

[List All](#)

### Specification

**Product Description:** Rabbit polyclonal antibody raised against a full-length human RNPEP protein.

**Immunogen:** RNPEP (NP\_064601.3, 1 a.a. ~ 650 a.a) full-length human protein.

**Sequence:**  
 MASGEHSPGSGAARRPLHSAQAVDVASASNFRAFELLHLHLDLRAEFGP  
 PGPGAGSRGLSGTAVLRLRCLEPEGAELRLDSHPCLEVTAALRRER  
 PGSEPPAEPVSFYTQPF SHYGQALCVSFPQPCRAAERLQVLLTYRVG  
 EGPVVCWLAPEQTAGKKKPFVYTQQQAVLNRAFFPCFDTPAVKYKYS  
 LIEVPDGF TAVMSASTWEKRGPNKFFFQMCQPIPSYLIALAIGDLVSAEV  
 GPRSRVWAEPCLIDAAKEEYNGVIEEF LAT GEKLF GPHYVWGRYDLLFMP  
 PSFPFGGMENPCLTFVTPCLLAGDRSLADVIIHEISHSWFGNLVTNANWG  
 EFWLNEGFTMYAQRRISTILF GAAYT CLEAAT GRALLRQHMDITGEENPL  
 NKLRVKIEPGVDPDDTYNETPYEKGF CFVSYLAHLVGDQDQFDSFLKAY  
 VHEFKFRSILADDFLDYLEYFPELKKKRVDIIPGFEFDRWLNTPGWPPY  
 LPDLSPGDSLMPAEELAQWAAEELDMKAIEAVAISPWKTYQLVYFLDK  
 ILQKSPLPPGNVKKLGDYPSISNARNAELRLRWGQIVLKNHDHEDFWKV  
 KEFLHNQGGKQYTLPLYHAMMGGSEVAQTLAKETFASTASQLHSNVVNY  
 VQQIVAPKGS

**Host:** Rabbit

**Reactivity:** Human

**Quality Control Testing:** Antibody reactive against mammalian transfected lysate.

**Storage Buffer:** In 1x PBS, pH 7.4

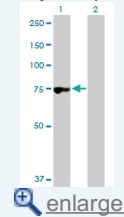
**Storage Instruction:** Store at -20°C or lower. Aliquot to avoid repeated freezing and thawing.

**MSDS:**  [Download](#)

**Datasheet:**  [Download](#)

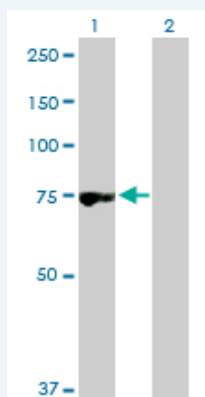
### Application Image

Western Blot (Transfected lysate)



### Applications

Western Blot (Transfected lysate)



Western Blot analysis of RNPEP expression in transfected 293T cell line (H00006051-T01)

by RNPEP MaxPab polyclonal antibody.

Lane 1: RNPEP transfected lysate(72.60 KDa).

Lane 2: Non-transfected lysate.

 [Protocol Download](#)

---

### Gene Information

---

**Entrez GeneID:** [6051](#)

---

**GeneBank** [NM\\_020216.3](#)

**Accession#:**

---

**Protein** [NP\\_064601.3](#)

**Accession#:**

---

**Gene Name:** RNPEP

---

**Gene Alias:** DKFZp547H084

---

**Gene** arginyl aminopeptidase (aminopeptidase B)

**Description:**

---

**Omim ID:** [602675](#)

---

**Gene Ontology:** [Hyperlink](#)

---

**Other** OTTHUMP00000034046,aminopeptidase B

**Designations:**

---

---

[服務條款](#) | [隱私權政策](#) | [著作及商標](#) | [網站地圖](#)

©2016 亞諾法生技股份有限公司 Abnova Corporation. 版權所有.