



SZABO SCANDIC

Part of Europa Biosite

Produktinformation



Forschungsprodukte & Biochemikalien



Zellkultur & Verbrauchsmaterial



Diagnostik & molekulare Diagnostik



Laborgeräte & Service

Weitere Information auf den folgenden Seiten!
See the following pages for more information!



Lieferung & Zahlungsart

siehe unsere [Liefer- und Versandbedingungen](#)

Zuschläge

- Mindermengenzuschlag
- Trockeneiszuschlag
- Gefahrgutzuschlag
- Expressversand

SZABO-SCANDIC HandelsgmbH

Quellenstraße 110, A-1100 Wien

T. +43(0)1 489 3961-0

F. +43(0)1 489 3961-7

mail@szabo-scandic.com

www.szabo-scandic.com

[linkedin.com/company/szaboscandic](https://www.linkedin.com/company/szaboscandic) 

ROBO1 polyclonal antibody (A01)

Catalog # : H00006091-A01

規格 : [50 uL]

List All

Specification

Product Description: Mouse polyclonal antibody raised against a partial recombinant ROBO1.

Immunogen: ROBO1 (NP_002932, 491 a.a. ~ 589 a.a) partial recombinant protein with GST tag.

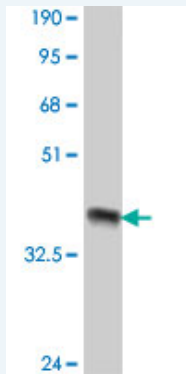
Sequence: DGVLVSTQDSRIKQLENGVLQIRYAKLGDTGRYTCASTPSGEATWSAYI
EVQEFGVPVQPPRPTDNLIPSAPSKPEVTDVSRNTVTLWQPNLNSGA

Host: Mouse

Reactivity: Human

Quality Control Antibody Reactive Against Recombinant Protein.

Testing:



Western Blot detection against Immunogen (37 KDa) .

Storage Buffer: 50 % glycerol

Storage Instruction: Store at -20°C or lower. Aliquot to avoid repeated freezing and thawing.

MSDS: [Download](#)

Datasheet: [Download](#)

Applications

Western Blot (Recombinant protein)

[Protocol Download](#)

ELISA

Gene Information

Entrez GeneID: [6091](#)

GeneBank [NM_002941](#)

Accession#:

Protein [NP_002932](#)

Accession#:

Gene Name: ROBO1

Gene Alias: DUTT1,FLJ21882,MGC131599,MGC133277,SAX3

Gene Description: roundabout, axon guidance receptor, homolog 1 (Drosophila)

Omim ID: [602430](#)

Gene Ontology: [Hyperlink](#)

Gene Summary: Bilateral symmetric nervous systems have special midline structures that establish a partition between the two mirror image halves. Some axons project toward and across the midline in response to long-range chemoattractants emanating from the midline. The product of this gene is a member of the immunoglobulin gene superfamily and encodes an integral membrane protein that functions in axon guidance and neuronal precursor cell migration. This receptor is activated by SLIT-family proteins, resulting in a repulsive effect on glioma cell guidance in the developing brain. A related gene is located at an adjacent region on chromosome 3. Multiple transcript variants encoding different isoforms have been found for this gene. [provided by RefSeq]

Other Designations: axon guidance receptor,roundabout 1

Gene Pathway

[Axon guidance](#)

Related Disease

[Asthma](#) [Genetic Predisposition to Disease](#) [Obesity](#) [Obesity](#) [Schizophrenia](#) [Schizophrenia](#) [Tobacco Use Disorder](#)