



SZABO SCANDIC

Part of Europa Biosite

Produktinformation



Forschungsprodukte & Biochemikalien



Zellkultur & Verbrauchsmaterial



Diagnostik & molekulare Diagnostik



Laborgeräte & Service

Weitere Information auf den folgenden Seiten!
See the following pages for more information!



Lieferung & Zahlungsart

siehe unsere [Liefer- und Versandbedingungen](#)

Zuschläge

- Mindermengenzuschlag
- Trockeneiszuschlag
- Gefahrgutzuschlag
- Expressversand

SZABO-SCANDIC HandelsgmbH

Quellenstraße 110, A-1100 Wien

T. +43(0)1 489 3961-0

F. +43(0)1 489 3961-7

mail@szabo-scandic.com

www.szabo-scandic.com

[linkedin.com/company/szaboscandic](https://www.linkedin.com/company/szaboscandic) 

ROBO1 monoclonal antibody (M01), clone 2G6

Catalog # : H00006091-M01

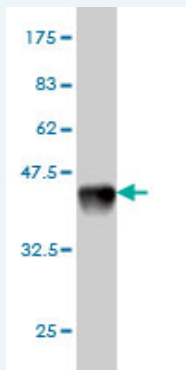
規格 : [100 ug]

[List All](#)

Specification

Product Description:	Mouse monoclonal antibody raised against a partial recombinant ROBO1.
Immunogen:	ROBO1 (NP_002932, 491 a.a. ~ 589 a.a) partial recombinant protein with GST tag. MW of the GST tag alone is 26 KDa.
Sequence:	DGVLVSTQDSRIKQLENGVLQIRYAKLGDTGRYTCASTPSGEATWSAYI EVQEFGVPVQPPRPTDNLIPSAPSKPEVTDVSRNTVTLWQPNLNSGA
Host:	Mouse
Reactivity:	Human
Isotype:	IgG2a Kappa

Quality Control Testing: Antibody Reactive Against Recombinant Protein.



Western Blot detection against Immunogen (36.63 KDa) .

Storage Buffer: In 1x PBS, pH 7.4

Storage Instruction: Store at -20°C or lower. Aliquot to avoid repeated freezing and thawing.

MSDS: [Download](#)

Datasheet: [Download](#)

Applications

Western Blot (Recombinant protein)

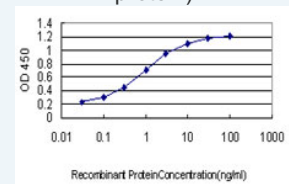
[Protocol Download](#)

Sandwich ELISA (Recombinant protein)

Application Image

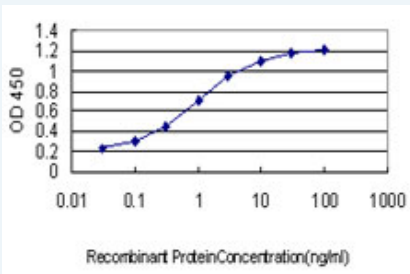
Western Blot (Recombinant protein)

Sandwich ELISA (Recombinant protein)



[enlarge](#)

ELISA



Detection limit for recombinant GST tagged ROBO1 is approximately 0.03ng/ml as a capture antibody.

 [Protocol Download](#)

ELISA

Gene Information

Entrez GeneID: [6091](#)

GeneBank [NM_002941](#)

Accession#:

Protein [NP_002932](#)

Accession#:

Gene Name: ROBO1

Gene Alias: DUTT1,FLJ21882,MGC131599,MGC133277,SAX3

Gene Description: roundabout, axon guidance receptor, homolog 1 (Drosophila)

Omim ID: [602430](#)

Gene Ontology: [Hyperlink](#)

Gene Summary: Bilateral symmetric nervous systems have special midline structures that establish a partition between the two mirror image halves. Some axons project toward and across the midline in response to long-range chemoattractants emanating from the midline. The product of this gene is a member of the immunoglobulin gene superfamily and encodes an integral membrane protein that functions in axon guidance and neuronal precursor cell migration. This receptor is activated by SLIT-family proteins, resulting in a repulsive effect on glioma cell guidance in the developing brain. A related gene is located at an adjacent region on chromosome 3. Multiple transcript variants encoding different isoforms have been found for this gene. [provided by RefSeq]

Other Designations: axon guidance receptor,roundabout 1

Gene Pathway

[Axon guidance](#)

Related Disease

[Asthma Genetic Predisposition to Disease](#) [Obesity](#) [Obesity](#) [Schizophrenia](#) [Schizophrenia](#) [Tobacco Use Disorder](#)