



# SZABO SCANDIC

Part of Europa Biosite

## Produktinformation



Forschungsprodukte & Biochemikalien



Zellkultur & Verbrauchsmaterial



Diagnostik & molekulare Diagnostik



Laborgeräte & Service

Weitere Information auf den folgenden Seiten!  
See the following pages for more information!



### Lieferung & Zahlungsart

siehe unsere [Liefer- und Versandbedingungen](#)

### Zuschläge

- Mindermengenzuschlag
- Trockeneiszuschlag
- Gefahrgutzuschlag
- Expressversand

### SZABO-SCANDIC HandelsgmbH

Quellenstraße 110, A-1100 Wien

T. +43(0)1 489 3961-0

F. +43(0)1 489 3961-7

[mail@szabo-scandic.com](mailto:mail@szabo-scandic.com)

[www.szabo-scandic.com](http://www.szabo-scandic.com)

[linkedin.com/company/szaboscandic](https://www.linkedin.com/company/szaboscandic) 

## ROBO2 polyclonal antibody (A01)

Catalog # : H00006092-A01

規格 : [ 50 uL ]

List All

### Specification

**Product Description:** Mouse polyclonal antibody raised against a partial recombinant ROBO2.

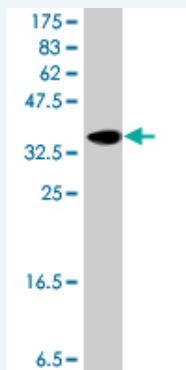
**Immunogen:** ROBO2 (NP\_002933, 441 a.a. ~ 540 a.a) partial recombinant protein with GST tag.

**Sequence:** ATGDPLPVISWLKEGFTFPGRDPRATIQEQGTLQIKNLRISDTGYTCVA  
TSSSGETSWSAVLVDVTEGATISKNYDLSDLPGPPSKPQVTDVTKNSVT  
L

**Host:** Mouse

**Reactivity:** Human

**Quality Control Testing:** Antibody Reactive Against Recombinant Protein.



Western Blot detection against Immunogen (37.11 kDa) .

**Storage Buffer:** 50 % glycerol

**Storage Instruction:** Store at -20°C or lower. Aliquot to avoid repeated freezing and thawing.

**MSDS:** [Download](#)

**Datasheet:** [Download](#)

### Applications

**Western Blot (Recombinant protein)**

[Protocol Download](#)

**ELISA**

### Gene Information

**Entrez GeneID:** [6092](#)

**GeneBank Accession#:** [NM\\_002942](#)

### Application Image

Western Blot (Recombinant protein)

ELISA

**Protein Accession#:** [NP\\_002933](#)

**Gene Name:** ROBO2

**Gene Alias:** KIAA1568,SAX3

**Gene Description:** roundabout, axon guidance receptor, homolog 2 (Drosophila)

**Omim ID:** [602431](#), [610878](#)

**Gene Ontology:** [Hyperlink](#)

**Gene Summary:** This gene belongs to the ROBO family, part of the immunoglobulin superfamily proteins that are highly conserved from fly to human. The encoded protein is a receptor for SLIT2, molecules known to function in axon guidance and cell migration. Defects in this gene are the cause of vesicoureteral reflux type 2. Alternatively spliced transcript variants encoding different isoforms have been described for this gene. [provided by RefSeq]

**Other Designations:** roundabout, axon guidance receptor, homolog 2

#### Gene Pathway

[Axon guidance](#)

#### Related Disease

[Antisocial Personality Disorder](#) [Celiac Disease](#) [Conduct Disorder](#) [Diseases in Twins](#) [Genetic Predisposition to Disease](#) [Personality Assessment](#) [Psychometrics](#) [Schizophrenia](#) [Schizophrenia](#) [Tobacco Use Disorder](#) [Vesico-Ureteral Reflux](#)