



SZABO SCANDIC

Part of Europa Biosite

Produktinformation



Forschungsprodukte & Biochemikalien



Zellkultur & Verbrauchsmaterial



Diagnostik & molekulare Diagnostik



Laborgeräte & Service

Weitere Information auf den folgenden Seiten!
See the following pages for more information!



Lieferung & Zahlungsart

siehe unsere [Liefer- und Versandbedingungen](#)

Zuschläge

- Mindermengenzuschlag
- Trockeneiszuschlag
- Gefahrgutzuschlag
- Expressversand

SZABO-SCANDIC HandelsgmbH

Quellenstraße 110, A-1100 Wien

T. +43(0)1 489 3961-0

F. +43(0)1 489 3961-7

mail@szabo-scandic.com

www.szabo-scandic.com

[linkedin.com/company/szaboscandic](https://www.linkedin.com/company/szaboscandic) 

ROBO2 purified MaxPab mouse polyclonal antibody (B01P) MaxPab®

Catalog # : H00006092-B01P

規格 : [50 ug]

[List All](#)

Specification

Product Description: Mouse polyclonal antibody raised against a full-length human ROBO2 protein.

Immunogen: ROBO2 (NP_002933.1, 1 a.a. ~ 1378 a.a) full-length human protein.

Sequence:
 MSLLMFTQLLLCGFLYVRVDGSRLRQEDFPPRIVEHPSDVIVSKGEPTTL
 NCKAEGRPTPTIEWYKDGERVETDKDDPRSHRMLLPSGSLFFLRIVHGR
 RSKPDEGSYVCVARNYLGEAVSRNASLEVALLRDDFRQNPTDVVVAAG
 EPAILECQPPRGHPEPTIYWKKDKVRIDDKEERISIRGGKLMISNTRKSDA
 GMYTCVGTNMVGERDSDPAELTVFERPTFLRRPINQVVLEEEAVEFRC
 QVQGDQPQTVRWKDDADLPRGRYDIKDDYTLRIKKT MSTDEGTYMCIA
 ENRVGKMEASATLTVRAPPQFVWRPRDQVAQGRVTVFCETKGNPQP
 AVFWQKEGSQNLFFPNQPQQPNRCSVSPTGDLTITNIQRSDAGYYICQ
 ALTVAGSILAKAQLEVTDVLTDRPPPIILQGPNQTLAVDGTALLKCKATG
 DLPVVISWLKEGFTFPGRDPRATIQEQGTLQIKNLRISDTGTYT CVATSS
 SGETSWSAVLDVTEGATISKNYDLSLPGPPSKPQVTDVTKNSVTL SW
 QPGTPTLPASAYIIEAFSQSVSNWQTVANHVKTLYTVRGLRPNTIYL
 FMVRAINPQGLSDPSPMSDPVRTQDISPPAQGVDRQVQKELGDVLRVRL
 HNPVVLTPPTVQVTWTVDRQPQFIQGYRVMYRQTSGLQATSSWQNL D
 AKVPTERSAVLVNLKKGVTYEIKVRPYFNEFQGMDESSEKTVRTTEEAPSA
 PPQSVTVLTVGSYNST SISVSWDPPPPDHQNGIIQEYKIWCLGNETRFHIN
 KTVDAAIRSVIIGGLFPGIQYRVEVAASTSAGVGVKSEPQPIIIIGRRNEVIT
 ENNNSITEQITDVVKQPAFIAGIGGACWVILMGFSIWLYWRRKKRKGLSNY
 AVTFQRGDGGLMSNGSRPGLLNAGDPSYPWLADSWPATSLPVNNSNS
 GPNEIGNFGRGDVLPVPGQGDKTATMLSDGAIYSSIDFTTKTSYNSSS
 QITQATPYATTQILHSNSIHELAVDLPDPQWKSSIQQKTDLMGFGYSLPD
 QNKGNNGGKGGKKNKNSKPKQKNGSTWANVPLPPPPVQPLPGTEL
 EHYAVEQKENGYSDSWCPPLPVQTYLHQGLEDELEEDDDRVPPTPPVR
 GVASSPAISFGQQSTATLTPSPREEMQPMQLQAHLDELTRAYQFDIAKQT
 WHIQSNNQPQPPVPLGYVSGALISDLETDVADDDADDEEEALEIPRPL
 RALDQTPGSSMDNLDSSVTGKAFTSSQRPRPTSPFSTDSNTSAALSQS
 QRPRPTKKHKGGRMDQQPALPHRREGMTDEEALVPYKPSFSPGGH
 SSSGTASSKGSTGPRKTEVLRAGHQRNASDLLDIGYMGSSNSQGQFTGE
 L

Host: Mouse

Reactivity: Human

Quality Control Testing: Antibody reactive against mammalian transfected lysate.

Storage Buffer: In 1x PBS, pH 7.4

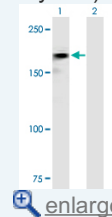
Storage Instruction: Store at -20°C or lower. Aliquot to avoid repeated freezing and thawing.

MSDS:  [Download](#)

Datasheet:  [Download](#)

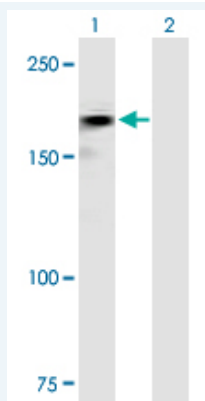
Application Image

Western Blot (Transfected lysate)



Applications

Western Blot (Transfected lysate)



Western Blot analysis of ROBO2 expression in transfected 293T cell line ([H00006092-T02](#)) by ROBO2 MaxPab polyclonal antibody.

Lane 1: ROBO2 transfected lysate(151.58 KDa).

Lane 2: Non-transfected lysate.

 [Protocol Download](#)

Gene Information

Entrez GeneID: [6092](#)

GeneBank [NM_002942.2](#)

Accession#:

Protein [NP_002933.1](#)

Accession#:

Gene Name: ROBO2

Gene Alias: KIAA1568,SAX3

Gene roundabout, axon guidance receptor, homolog 2 (Drosophila)

Description:

Omim ID: [602431](#), [610878](#)

Gene Ontology: [Hyperlink](#)

Gene Summary: This gene belongs to the ROBO family, part of the immunoglobulin superfamily proteins that are highly conserved from fly to human. The encoded protein is a receptor for SLIT2, molecules known to function in axon guidance and cell migration. Defects in this gene are the cause of vesicoureteral reflux type 2. Alternatively spliced transcript variants encoding different isoforms have been described for this gene.
[provided by RefSeq]

Other roundabout, axon guidance receptor, homolog 2

Designations:

Gene Pathway

[Axon guidance](#)

Related Disease

[Antisocial Personality Disorder](#) [Celiac Disease](#) [Conduct Disorder](#) [Diseases in Twins](#)
[Genetic Predisposition to Disease](#) [Personality Assessment](#) [Psychometrics](#) [Schizophrenia](#)
[Schizophrenia](#) [Tobacco Use Disorder](#) [Vesico-Ureteral Reflux](#)

