



SZABO SCANDIC

Part of Europa Biosite

Produktinformation



Forschungsprodukte & Biochemikalien



Zellkultur & Verbrauchsmaterial



Diagnostik & molekulare Diagnostik



Laborgeräte & Service

Weitere Information auf den folgenden Seiten!
See the following pages for more information!



Lieferung & Zahlungsart

siehe unsere [Liefer- und Versandbedingungen](#)

Zuschläge

- Mindermengenzuschlag
- Trockeneiszuschlag
- Gefahrgutzuschlag
- Expressversand

SZABO-SCANDIC HandelsgmbH

Quellenstraße 110, A-1100 Wien

T. +43(0)1 489 3961-0

F. +43(0)1 489 3961-7

mail@szabo-scandic.com

www.szabo-scandic.com

[linkedin.com/company/szaboscandic](https://www.linkedin.com/company/szaboscandic) 

ROBO2 monoclonal antibody (M01), clone 4G5

Catalog # : H00006092-M01

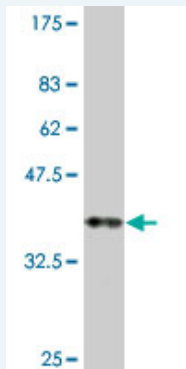
規格 : [100 ug]

[List All](#)

Specification

Product Description:	Mouse monoclonal antibody raised against a partial recombinant ROBO2.
Immunogen:	ROBO2 (NP_002933, 441 a.a. ~ 540 a.a) partial recombinant protein with GST tag. MW of the GST tag alone is 26 KDa.
Sequence:	ATGDPLPVISWLKEGFTFPGRDPRATIQEQGLQIKNLRISDTGTYTCVA TSSSGETSWSAVLDVTEGATISKNYDLSDLPGPPSKPQVTDVTKNSVT L
Host:	Mouse
Reactivity:	Human
Isotype:	IgG2b Kappa

Quality Control Testing: Antibody Reactive Against Recombinant Protein.



Western Blot detection against Immunogen (36.74 KDa) .

Storage Buffer: In 1x PBS, pH 7.4

Storage Instruction: Store at -20°C or lower. Aliquot to avoid repeated freezing and thawing.

MSDS: [Download](#)

Datasheet: [Download](#)

Applications

Western Blot (Recombinant protein)

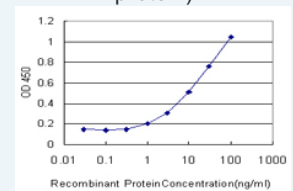
[Protocol Download](#)

Sandwich ELISA (Recombinant protein)

Application Image

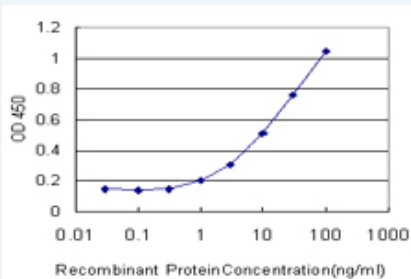
Western Blot (Recombinant protein)

Sandwich ELISA (Recombinant protein)



[enlarge](#)

ELISA



Detection limit for recombinant GST tagged ROBO2 is approximately 1ng/ml as a capture antibody.

 [Protocol Download](#)

ELISA

Gene Information

Entrez GeneID: [6092](#)

GeneBank [NM_002942](#)

Accession#:

Protein [NP_002933](#)

Accession#:

Gene Name: ROBO2

Gene Alias: KIAA1568,SAX3

Gene Description: roundabout, axon guidance receptor, homolog 2 (Drosophila)

Omim ID: [602431](#), [610878](#)

Gene Ontology: [Hyperlink](#)

Gene Summary: This gene belongs to the ROBO family, part of the immunoglobulin superfamily proteins that are highly conserved from fly to human. The encoded protein is a receptor for SLIT2, molecules known to function in axon guidance and cell migration. Defects in this gene are the cause of vesicoureteral reflux type 2. Alternatively spliced transcript variants encoding different isoforms have been described for this gene. [provided by RefSeq]

Other Designations: roundabout, axon guidance receptor, homolog 2

Gene Pathway

[Axon guidance](#)

Related Disease

[Antisocial Personality Disorder](#) [Celiac Disease](#) [Conduct Disorder](#) [Diseases in Twins](#) [Genetic Predisposition to Disease](#) [Personality Assessment](#) [Psychometrics](#) [Schizophrenia](#) [Schizophrenia](#) [Tobacco Use Disorder](#) [Vesico-Ureteral Reflux](#)