



SZABO SCANDIC

Part of Europa Biosite

Produktinformation



Forschungsprodukte & Biochemikalien



Zellkultur & Verbrauchsmaterial



Diagnostik & molekulare Diagnostik



Laborgeräte & Service

Weitere Information auf den folgenden Seiten!
See the following pages for more information!



Lieferung & Zahlungsart

siehe unsere [Liefer- und Versandbedingungen](#)

Zuschläge

- Mindermengenzuschlag
- Trockeneiszuschlag
- Gefahrgutzuschlag
- Expressversand

SZABO-SCANDIC HandelsgmbH

Quellenstraße 110, A-1100 Wien

T. +43(0)1 489 3961-0

F. +43(0)1 489 3961-7

mail@szabo-scandic.com

www.szabo-scandic.com

[linkedin.com/company/szaboscandic](https://www.linkedin.com/company/szaboscandic) 

ROBO2 293T Cell Transient Overexpression Lysate(Denatured)

Catalog # : H00006092-T02

規格 : [100 uL]

List All

Specification

Transfected Cell Line: 293T

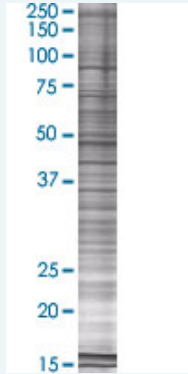
Plasmid: pCMV-ROBO2 full-length

Host: Human

Theoretical MW (kDa): 151.2

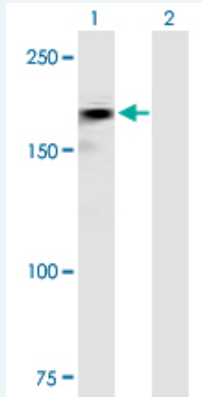
Quality Control Testing: Transient overexpression cell lysate was tested with Anti-ROBO2 antibody (H00006092-B01P) by Western Blots.

SDS-PAGE Gel



ROBO2 transfected lysate.

Western Blot



Lane 1: ROBO2 transfected lysate (151.2 KDa)

Lane 2: Non-transfected lysate.

Storage Buffer: 1X Sample Buffer (50 mM Tris-HCl, 2% SDS, 10% glycerol, 300 mM 2-mercaptoethanol, 0.01% Bromophenol blue)

Storage Instruction: Store at -80°C. Aliquot to avoid repeated freezing and thawing.

MSDS:  [Download](#)

Applications

Application Image

Western Blot

Western Blot

Gene Information

Entrez GeneID: [6092](#)

**GeneBank
Accession#:** [NM_002942.2](#)

**Protein
Accession#:** [NP_002933.1](#)

Gene Name: ROBO2

Gene Alias: KIAA1568,SAX3

**Gene
Description:** roundabout, axon guidance receptor, homolog 2 (Drosophila)

Omim ID: [602431](#), [610878](#)

Gene Ontology: [Hyperlink](#)

Gene Summary: This gene belongs to the ROBO family, part of the immunoglobulin superfamily proteins that are highly conserved from fly to human. The encoded protein is a receptor for SLIT2, molecules known to function in axon guidance and cell migration. Defects in this gene are the cause of vesicoureteral reflux type 2. Alternatively spliced transcript variants encoding different isoforms have been described for this gene.
[provided by RefSeq]

**Other
Designations:** roundabout, axon guidance receptor, homolog 2

Gene Pathway

[Axon guidance](#)

Related Disease

[Antisocial Personality Disorder](#) [Celiac Disease](#) [Conduct Disorder](#) [Diseases in Twins](#)
[Genetic Predisposition to Disease](#) [Personality Assessment](#) [Psychometrics](#) [Schizophrenia](#)
[Schizophrenia](#) [Tobacco Use Disorder](#) [Vesico-Ureteral Reflux](#)

[服務條款](#) | [隱私權政策](#) | [著作及商標](#) | [網站地圖](#)

©2016 亞諾法生技股份有限公司 Abnova Corporation. 版權所有.