



SZABO SCANDIC

Part of Europa Biosite

Produktinformation



Forschungsprodukte & Biochemikalien



Zellkultur & Verbrauchsmaterial



Diagnostik & molekulare Diagnostik



Laborgeräte & Service

Weitere Information auf den folgenden Seiten!
See the following pages for more information!



Lieferung & Zahlungsart

siehe unsere [Liefer- und Versandbedingungen](#)

Zuschläge

- Mindermengenzuschlag
- Trockeneiszuschlag
- Gefahrgutzuschlag
- Expressversand

SZABO-SCANDIC HandelsgmbH

Quellenstraße 110, A-1100 Wien

T. +43(0)1 489 3961-0

F. +43(0)1 489 3961-7

mail@szabo-scandic.com

www.szabo-scandic.com

[linkedin.com/company/szaboscandic](https://www.linkedin.com/company/szaboscandic) 

ROCK1 monoclonal antibody (M01), clone 2E2

Catalog # : H00006093-M01

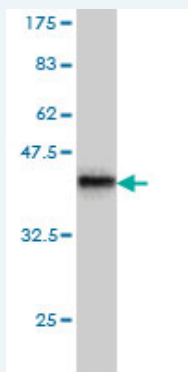
規格 : [100 ug]

[List All](#)

Specification

Product Description:	Mouse monoclonal antibody raised against a partial recombinant ROCK1.
Immunogen:	ROCK1 (NP_005397, 401 a.a. ~ 510 a.a) partial recombinant protein with GST tag. MW of the GST tag alone is 26 KDa.
Sequence:	SNRRYLSSANPNDNRTSSNADKSLQESLQKTIYKLEEQLHNEMQLKDEM EQKCRSTSNIKL DKIMKELDEEGNQRRNLESTVSQIEKEKMLLQHRINEYQR KAEQENEKRR
Host:	Mouse
Reactivity:	Human
Isotype:	IgG1 Kappa

Quality Control Testing: Antibody Reactive Against Recombinant Protein.



Western Blot detection against Immunogen (37.84 KDa) .

Storage Buffer: In 1x PBS, pH 7.4

Storage Instruction: Store at -20°C or lower. Aliquot to avoid repeated freezing and thawing.

MSDS: [Download](#)

Datasheet: [Download](#)

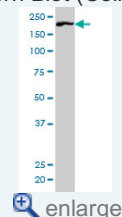
Publication Reference

1. [A novel role of Rho-kinase in the regulation of ligand-induced phosphorylated EGFR endocytosis via the early/late endocytic pathway in human fibrosarcoma cells.](#)
Nishimura Y, Bereczky B, Yoshioka K, Taniguchi S, Itoh K. *J Mol Histol.* 2011 Oct;42(5):427-42. Epub 2011 Aug 17.
2. [Integration of virtual screening with high-throughput screening for the identification of novel Rho-kinase I inhibitors.](#)
Gong LL, Fang LH, Peng JH, Liu AL, Du GH. *J Biotechnol.* 2009 Dec 4. [Epub ahead of print]

Applications

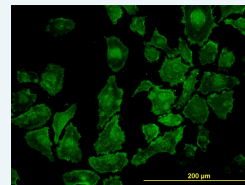
Application Image

Western Blot (Cell lysate)

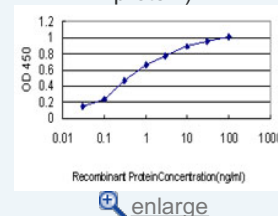


Western Blot (Recombinant protein)

Immunofluorescence

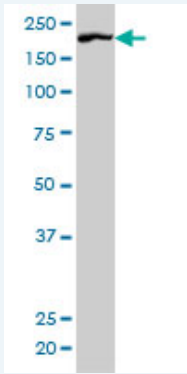


Sandwich ELISA (Recombinant protein)



ELISA

Western Blot (Cell lysate)



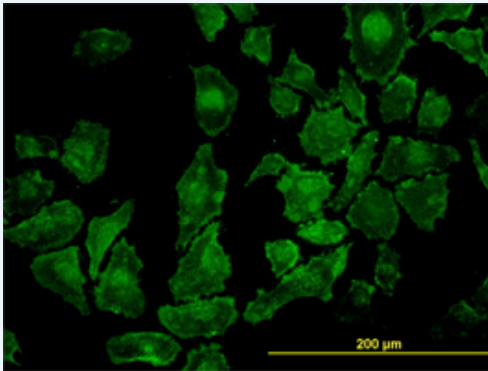
ROCK1 monoclonal antibody (M01), clone 2E2 Western Blot analysis of ROCK1 expression in HeLa S3 NE (Cat # L013V3).

[Protocol Download](#)

Western Blot (Recombinant protein)

[Protocol Download](#)

Immunofluorescence

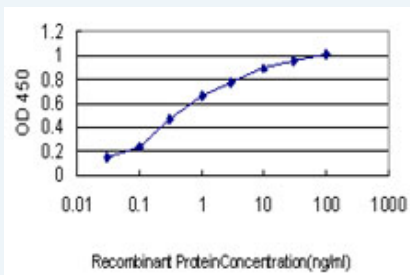


[enlarge this image](#)

Immunofluorescence of monoclonal antibody to ROCK1 on HeLa cell. [antibody concentration 10 ug/ml]

[Protocol Download](#)

Sandwich ELISA (Recombinant protein)



Detection limit for recombinant GST tagged ROCK1 is approximately 0.03ng/ml as a capture antibody.

[Protocol Download](#)

ELISA

Gene Information

Entrez GeneID: [6093](#)

GeneBank [NM_005406](#)
Accession#:

Protein [NP_005397](#)
Accession#:

Gene Name: ROCK1

Gene Alias: MGC131603,MGC43611,P160ROCK,PRO0435

Gene Description: Rho-associated, coiled-coil containing protein kinase 1

Omim ID: [601702](#)

Gene Ontology: [Hyperlink](#)

Gene Summary: This gene encodes a protein serine/threonine kinase that is activated when bound to the GTP-bound form of Rho. The small GTPase Rho regulates formation of focal adhesions and stress fibers of fibroblasts, as well as adhesion and aggregation of platelets and lymphocytes by shuttling between the inactive GDP-bound form and the active GTP-bound form. Rho is also essential in cytokinesis and plays a role in transcriptional activation by serum response factor. This protein, a downstream effector of Rho, phosphorylates and activates LIM kinase, which in turn, phosphorylates cofilin, inhibiting its actin-depolymerizing activity. [provided by RefSeq]

Other Designations: OTTHUMP00000162514,p160-ROCK

Gene Pathway

[Axon guidance](#) [Chemokine signaling pathway](#) [Focal adhesion](#)
[Leukocyte transendothelial migration](#) [Pathogenic Escherichia coli infection - EHEC](#)
[Regulation of actin cytoskeleton](#) [TGF-beta signaling pathway](#)
[Vascular smooth muscle contraction](#) [Wnt signaling pathway](#)

Related Disease

[Adenocarcinoma](#) [Cardiovascular Diseases](#) [Diabetes Mellitus, Type 2](#) [Edema](#)
[Genetic Predisposition to Disease](#) [HIV Infections](#) [Obesity](#) [Ovarian Failure](#), [Premature](#)
[Pancreatic Neoplasms](#) [Polycystic Ovary Syndrome](#) [Puberty, Delayed](#) [Puberty, Precocious](#)
[Schizophrenia](#) [Schizophrenia](#) [Thrombophilia](#) [Tobacco Use Disorder](#)

[服務條款](#) | [隱私權政策](#) | [著作及商標](#) | [網站地圖](#)

©2016 亞諾法生技股份有限公司 Abnova Corporation. 版權所有.