



# SZABO SCANDIC

Part of Europa Biosite

## Produktinformation



Forschungsprodukte & Biochemikalien



Zellkultur & Verbrauchsmaterial



Diagnostik & molekulare Diagnostik



Laborgeräte & Service

Weitere Information auf den folgenden Seiten!  
See the following pages for more information!



### Lieferung & Zahlungsart

siehe unsere [Liefer- und Versandbedingungen](#)

### Zuschläge

- Mindermengenzuschlag
- Trockeneiszuschlag
- Gefahrgutzuschlag
- Expressversand

### SZABO-SCANDIC HandelsgmbH

Quellenstraße 110, A-1100 Wien

T. +43(0)1 489 3961-0

F. +43(0)1 489 3961-7

[mail@szabo-scandic.com](mailto:mail@szabo-scandic.com)

[www.szabo-scandic.com](http://www.szabo-scandic.com)

[linkedin.com/company/szaboscandic](https://www.linkedin.com/company/szaboscandic) 

## ROM1 polyclonal antibody (A02)

Catalog # : H00006094-A02

規格 : [ 50 uL ]

List All

### Specification

**Product Description:** Mouse polyclonal antibody raised against a partial recombinant ROM1.

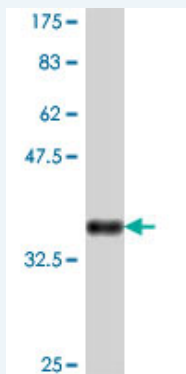
**Immunogen:** ROM1 (NP\_000318, 163 a.a. ~ 264 a.a) partial recombinant protein with GST tag.

**Sequence:** QLRyhCCGRhGYKDWFGVQWSSRYLDPGDRDVADRIQSNVEGLYLT  
DGVPFSCCNPHSPRPCLQNRLSDSYAHPLFDPRQPQNQLWAQGCHEVL  
LEHLQDL

**Host:** Mouse

**Reactivity:** Human

**Quality Control Testing:** Antibody Reactive Against Recombinant Protein.



Western Blot detection against Immunogen (37.33 kDa) .

**Storage Buffer:** 50 % glycerol

**Storage Instruction:** Store at -20°C or lower. Aliquot to avoid repeated freezing and thawing.

**MSDS:** [Download](#)

**Datasheet:** [Download](#)

### Applications

Western Blot (Recombinant protein)

[Protocol Download](#)

ELISA

### Gene Information

**Entrez GeneID:** [6094](#)

**GeneBank Accession#:** [NM\\_000327](#)

### Application Image

Western Blot (Recombinant protein)

ELISA

**Protein Accession#:** [NP\\_000318](#)

**Gene Name:** ROM1

**Gene Alias:** ROM,ROSP1,TSPAN23

**Gene Description:** retinal outer segment membrane protein 1

**Omim ID:** [180721](#)

**Gene Ontology:** [Hyperlink](#)

**Gene Summary:** This gene is a member of a photoreceptor-specific gene family and encodes an integral membrane protein found in the photoreceptor disk rim of the eye. This protein can form homodimers or can heterodimerize with another photoreceptor, retinal degeneration slow (RDS). It is essential for disk morphogenesis, and may also function as an adhesion molecule involved in the stabilization and compaction of outer segment disks or in the maintenance of the curvature of the rim. Certain defects in this gene have been associated with the degenerative eye disease retinitis pigmentosa. [provided by RefSeq]

**Other Designations:** rod outer segment membrane protein 1

#### **Related Disease**

[Retinal Diseases](#)