



SZABO SCANDIC

Part of Europa Biosite

Produktinformation



Forschungsprodukte & Biochemikalien



Zellkultur & Verbrauchsmaterial



Diagnostik & molekulare Diagnostik



Laborgeräte & Service

Weitere Information auf den folgenden Seiten!
See the following pages for more information!



Lieferung & Zahlungsart

siehe unsere [Liefer- und Versandbedingungen](#)

Zuschläge

- Mindermengenzuschlag
- Trockeneiszuschlag
- Gefahrgutzuschlag
- Expressversand

SZABO-SCANDIC HandelsgmbH

Quellenstraße 110, A-1100 Wien

T. +43(0)1 489 3961-0

F. +43(0)1 489 3961-7

mail@szabo-scandic.com

www.szabo-scandic.com

[linkedin.com/company/szaboscandic](https://www.linkedin.com/company/szaboscandic) 

ROM1 purified MaxPab mouse polyclonal antibody (B01P) MaxPab®

Catalog # : H00006094-B01P

規格 : [50 ug]

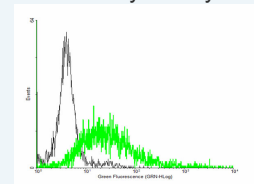
[List All](#)

Specification

Product Description:	Mouse polyclonal antibody raised against a full-length human ROM1 protein.
Immunogen:	ROM1 (NP_000318.1, 1 a.a. ~ 351 a.a) full-length human protein.
Sequence:	MAPVLPLVLPLQPRIRLAQGLWLLSWLLALAGGVILLCSGHLLVQLRHLG TFLAPSCQFPVLPQAALAAGAVALGTGLVGVGASRASLNAALYPPWRG VLGPLL VAGTAGGGGLLWALGLALALPGSLDEALEEGLVTALAHYKDT EVPGHQCAKRLVDELQLRYHCCGRHGYKDFWVGVQWVSSRYLDPGDR DVADRIQSNVEGLYLTGVPFSCCNPHSPRPCLQNRLSDSYAHLFDPR QPNQNLWAQGCVLLEHLQDLAGTLGSM LAVTFLLQALVLLGLRYLQ TALEGLGGVIDAGGETQGYLFP SGLK DMLKTAWLQGGVACRPAPPEEAP PGEAPPKEDLSEA
Host:	Mouse
Reactivity:	Human
Quality Control Testing:	Antibody reactive against mammalian transfected lysate.
Storage Buffer:	In 1x PBS, pH 7.4
Storage Instruction:	Store at -20°C or lower. Aliquot to avoid repeated freezing and thawing.
MSDS:	Download
Datasheet:	Download

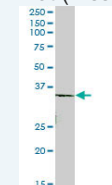
Application Image

Flow Cytometry



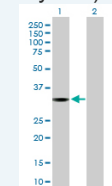
[enlarge](#)

Western Blot (Tissue lysate)



[enlarge](#)

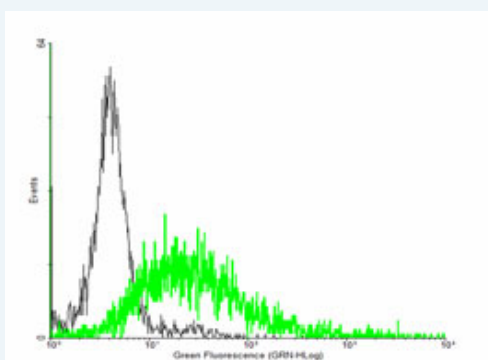
Western Blot (Transfected lysate)



[enlarge](#)

Applications

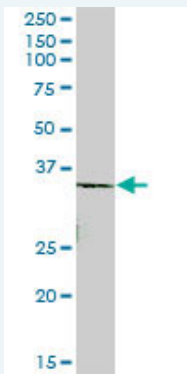
Flow Cytometry



[enlarge this image](#)

FACS analysis of negative control 293 cells (Black) and ROM1 expressing 293 cells (Green) using ROM1 purified MaxPab mouse polyclonal antibody.

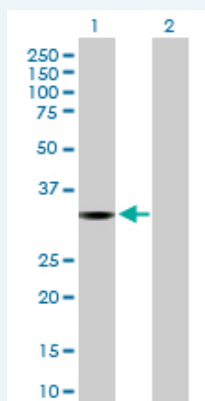
Western Blot (Tissue lysate)



ROM1 MaxPab polyclonal antibody. Western Blot analysis of ROM1 expression in human kidney.

 [Protocol Download](#)

Western Blot (Transfected lysate)



Western Blot analysis of ROM1 expression in transfected 293T cell line ([H00006094-T01](#)) by ROM1 MaxPab polyclonal antibody.

Lane1:ROM1 transfected lysate(38.61 KDa).

Lane2:Non-transfected lysate.

 [Protocol Download](#)

Gene Information

Entrez GeneID: [6094](#)

GeneBank [NM_000327.2](#)

Accession#:

Protein [NP_000318.1](#)

Accession#:

Gene Name: ROM1

Gene Alias: ROM,ROSP1,TSPAN23

Gene retinal outer segment membrane protein 1

Description:

Omim ID: [180721](#)

Gene Ontology: [Hyperlink](#)

Gene Summary: This gene is a member of a photoreceptor-specific gene family and encodes an integral membrane protein found in the photoreceptor disk rim of the eye. This protein can form homodimers or can heterodimerize with another photoreceptor, retinal degeneration slow (RDS). It is essential for disk morphogenesis, and may also function as an adhesion molecule involved in the stabilization and compaction of outer segment disks or in the maintenance of the curvature of the rim. Certain defects in this gene have been associated with the degenerative eye disease

retinitis pigmentosa. [provided by RefSeq]

Other rod outer segment membrane protein 1
Designations:

Related Disease

Retinal Diseases

[服務條款](#) | [隱私權政策](#) | [著作及商標](#) | [網站地圖](#)

©2016 亞諾法生技股份有限公司 Abnova Corporation. 版權所有.