



SZABO SCANDIC

Part of Europa Biosite

Produktinformation



Forschungsprodukte & Biochemikalien



Zellkultur & Verbrauchsmaterial



Diagnostik & molekulare Diagnostik



Laborgeräte & Service

Weitere Information auf den folgenden Seiten!
See the following pages for more information!



Lieferung & Zahlungsart

siehe unsere [Liefer- und Versandbedingungen](#)

Zuschläge

- Mindermengenzuschlag
- Trockeneiszuschlag
- Gefahrgutzuschlag
- Expressversand

SZABO-SCANDIC HandelsgmbH

Quellenstraße 110, A-1100 Wien

T. +43(0)1 489 3961-0

F. +43(0)1 489 3961-7

mail@szabo-scandic.com

www.szabo-scandic.com

[linkedin.com/company/szaboscandic](https://www.linkedin.com/company/szaboscandic) 

ROM1 293T Cell Transient Overexpression Lysate(Denatured)

Catalog # : H00006094-T01

規格 : [100 uL]

[List All](#)

Specification

Transfected Cell Line: 293T

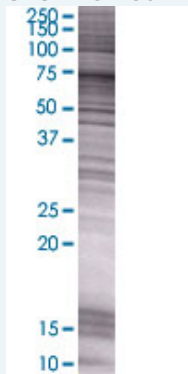
Plasmid: pCMV-ROM1 full-length

Host: Human

Theoretical MW (kDa): 38.72

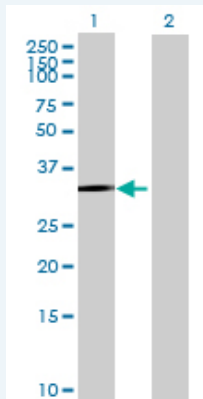
Quality Control Testing: Transient overexpression cell lysate was tested with Anti-ROM1 antibody ([H00006094-B01](#)) by Western Blots.

SDS-PAGE Gel



ROM1 transfected lysate.

Western Blot



Lane 1: ROM1 transfected lysate (38.72 KDa)

Lane 2: Non-transfected lysate.

Storage Buffer: 1X Sample Buffer (50 mM Tris-HCl, 2% SDS, 10% glycerol, 300 mM 2-mercaptoethanol, 0.01% Bromophenol blue)

Storage Instruction: Store at -80°C. Aliquot to avoid repeated freezing and thawing.

MSDS:  [Download](#)

Applications

Western Blot

Gene Information

Entrez GeneID: [6094](#)

GeneBank Accession#: [NM_000327.2](#)

Protein Accession#: [NP_000318.1](#)

Gene Name: ROM1

Gene Alias: ROM,ROSP1,TSPAN23

Gene Description: retinal outer segment membrane protein 1

Omim ID: [180721](#)

Gene Ontology: [Hyperlink](#)

Gene Summary: This gene is a member of a photoreceptor-specific gene family and encodes an integral membrane protein found in the photoreceptor disk rim of the eye. This protein can form homodimers or can heterodimerize with another photoreceptor, retinal degeneration slow (RDS). It is essential for disk morphogenesis, and may also function as an adhesion molecule involved in the stabilization and compaction of outer segment disks or in the maintenance of the curvature of the rim. Certain defects in this gene have been associated with the degenerative eye disease retinitis pigmentosa. [provided by RefSeq]

Other Designations: rod outer segment membrane protein 1

Related Disease

[Retinal Diseases](#)