



SZABO SCANDIC

Part of Europa Biosite

Produktinformation



Forschungsprodukte & Biochemikalien



Zellkultur & Verbrauchsmaterial



Diagnostik & molekulare Diagnostik



Laborgeräte & Service

Weitere Information auf den folgenden Seiten!
See the following pages for more information!



Lieferung & Zahlungsart

siehe unsere [Liefer- und Versandbedingungen](#)

Zuschläge

- Mindermengenzuschlag
- Trockeneiszuschlag
- Gefahrgutzuschlag
- Expressversand

SZABO-SCANDIC HandelsgmbH

Quellenstraße 110, A-1100 Wien

T. +43(0)1 489 3961-0

F. +43(0)1 489 3961-7

mail@szabo-scandic.com

www.szabo-scandic.com

[linkedin.com/company/szaboscandic](https://www.linkedin.com/company/szaboscandic) 

RORA purified MaxPab rabbit polyclonal antibody (D01P) MaxPab®

Catalog # : H00006095-D01P

規格 : [100 ug]

[List All](#)

Specification

Product Description: Rabbit polyclonal antibody raised against a full-length human RORA protein.

Immunogen: RORA (NP_599024.1, 1 a.a. ~ 468 a.a) full-length human protein.

Sequence:
 MMYFVIAAMKAQIEIIPCKICGDKSSGIHYGVITCEGCKGFFRRSQSNAT
 YSCPRQKNCLIDRTSRNRCQHCLQKCLAVGMSRDAVKFGRMSKKQR
 DSLYAEVQKHRMQQQRDHQQQPGAEPLTPTYNISANGLTELHDDL
 NYIDGHTPEGSKADSAVSSFYLDIQSPDQSGLDINGIKPEPICDYTPASG
 FFPYCSFTNGETSPTVSMAELEHLAQNISKSHLETQYLRLEELQKITWQT
 FLQEEIENYQNKQREVMMWQLCAIKITEAIQYVVEFAKRIDGFMELCQNDQI
 VLLKAGSLEVVFFIRMCRAFDSQNNVYFDGKYASPDVFKSLGCEDFISFV
 FEFGKSLCSMHLTEDEIALFSAFVLMASDRSWLQEKVKIEKLQQKIQLLAL
 QHVLQKNHREDGILTKLICKVSTLRALCGRHTEKLMFAFKAIYPDIVRLHFP
 PLYKELFTSEFEPAMQIDG

Host: Rabbit

Reactivity: Human

Quality Control Testing: Antibody reactive against mammalian transfected lysate.

Storage Buffer: In 1x PBS, pH 7.4

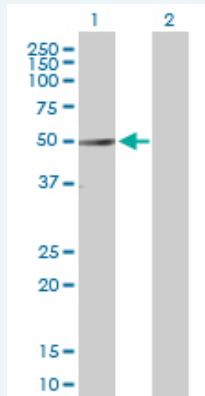
Storage Instruction: Store at -20°C or lower. Aliquot to avoid repeated freezing and thawing.

MSDS: [Download](#)

Datasheet: [Download](#)

Applications

Western Blot (Transfected lysate)

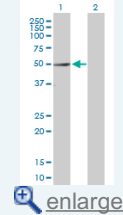


Western Blot analysis of RORA expression in transfected 293T cell line (H00006095-T02) by RORA MaxPab polyclonal antibody.

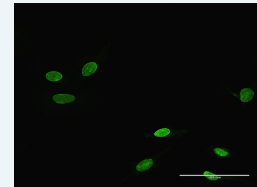
Lane 1: RORA transfected lysate(53.50 KDa).
 Lane 2: Non-transfected lysate.

Application Image

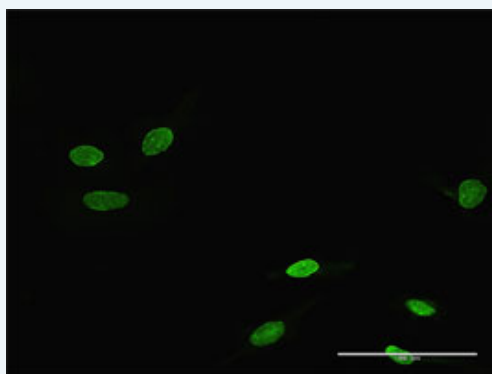
Western Blot (Transfected lysate)




Immunofluorescence



Immunofluorescence



 enlarge this image

Immunofluorescence of purified MaxPab antibody to RORA on HeLa cell. [antibody concentration 10 ug/ml]

Gene Information

Entrez GeneID: [6095](#)

GeneBank [NM_134262.1](#)

Accession#:

Protein [NP_599024.1](#)

Accession#:

Gene Name: RORA

Gene Alias: DKFZp686M2414,MGC119326,MGC119329,NR1F1,ROR1,ROR2,ROR3,RZR-ALPHA,RZRA

Gene RAR-related orphan receptor A

Description:

Omim ID: [600825](#)

Gene Ontology: [Hyperlink](#)

Gene Summary: The protein encoded by this gene is a member of the NR1 subfamily of nuclear hormone receptors. It can bind as a monomer or as a homodimer to hormone response elements upstream of several genes to enhance the expression of those genes. The specific functions of this protein are not known, but it has been shown to interact with NM23-2, a nucleoside diphosphate kinase involved in organogenesis and differentiation, as well as with NM23-1, the product of a tumor metastasis suppressor candidate gene. Four transcript variants encoding different isoforms have been described for this gene. [provided by RefSeq]

Other Designations: RAR-related orphan receptor alpha,ROR-alpha,retinoic acid receptor-related orphan receptor alpha,retinoid-related orphan receptor alpha,transcription factor RZR-alpha

Related Disease

[Bipolar Disorder](#) [Cardiovascular Diseases](#) [Choroidal Neovascularization](#) [Chronobiology Disorders](#) [Depressive Disorder](#) [Depressive Disorder, Major](#) [Diabetes Mellitus, Type 2](#) [Disease Models, Animal](#) [Edema](#) [Genetic Predisposition to Disease](#) [Macular Degeneration](#) [Mood Disorders](#) [Psychiatric Status Rating Scales](#) [Sleep Disorders](#) [Tobacco Use Disorder](#)

