



SZABO SCANDIC

Part of Europa Biosite

Produktinformation



Forschungsprodukte & Biochemikalien



Zellkultur & Verbrauchsmaterial



Diagnostik & molekulare Diagnostik



Laborgeräte & Service

Weitere Information auf den folgenden Seiten!
See the following pages for more information!



Lieferung & Zahlungsart

siehe unsere [Liefer- und Versandbedingungen](#)

Zuschläge

- Mindermengenzuschlag
- Trockeneiszuschlag
- Gefahrgutzuschlag
- Expressversand

SZABO-SCANDIC HandelsgmbH

Quellenstraße 110, A-1100 Wien

T. +43(0)1 489 3961-0

F. +43(0)1 489 3961-7

mail@szabo-scandic.com

www.szabo-scandic.com

[linkedin.com/company/szaboscandic](https://www.linkedin.com/company/szaboscandic) 

RORB monoclonal antibody (M08), clone 1E5

Catalog # : H00006096-M08

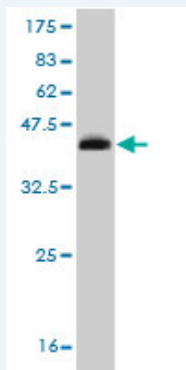
規格 : [100 ug]

[List All](#)

Specification

Product Description:	Mouse monoclonal antibody raised against a partial recombinant RORB.
Immunogen:	RORB (NP_008845, 136 a.a. ~ 224 a.a) partial recombinant protein with GST tag. MW of the GST tag alone is 26 KDa.
Sequence:	ETSGTYANGHVIDLPKSEGYYNVDSGQSPDQSGLDMTGIKQIKQEPIYD LTSVPNLFYSSFNNGQLAPGITMTEIDRIAQNIKSHL
Host:	Mouse
Reactivity:	Human
Isotype:	IgG1 Lambda

Quality Control Testing: Antibody Reactive Against Recombinant Protein.



Western Blot detection against Immunogen (35.53 KDa) .

Storage Buffer: In 1x PBS, pH 7.4

Storage Instruction: Store at -20°C or lower. Aliquot to avoid repeated freezing and thawing.

MSDS: [Download](#)

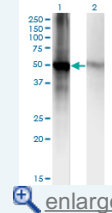
Datasheet: [Download](#)

Applications

Western Blot (Transfected lysate)

Application Image

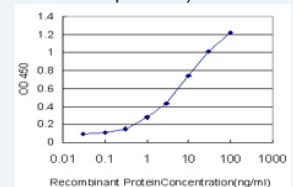
Western Blot (Transfected lysate)



[enlarge](#)

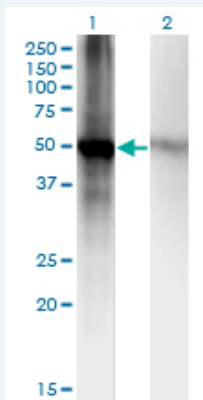
Western Blot (Recombinant protein)

Sandwich ELISA (Recombinant protein)



[enlarge](#)

ELISA



Western Blot analysis of RORB expression in transfected 293T cell line by RORB monoclonal antibody (M08), clone 1E5.

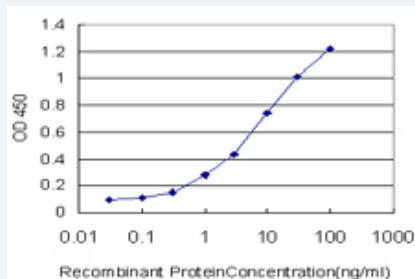
Lane 1: RORB transfected lysate (Predicted MW: 52.1 KDa).
Lane 2: Non-transfected lysate.

[Protocol Download](#)

Western Blot (Recombinant protein)

[Protocol Download](#)

Sandwich ELISA (Recombinant protein)



Detection limit for recombinant GST tagged RORB is approximately 0.1ng/ml as a capture antibody.

[Protocol Download](#)

ELISA

Gene Information

Entrez GeneID: [6096](#)

GeneBank [NM_006914](#)
Accession#:

Protein [NP_008845](#)
Accession#:

Gene Name: RORB

Gene Alias: NR1F2,ROR-BETA,RZR-BETA,RZRB,bA133M9.1

Gene Description: RAR-related orphan receptor B

Omim ID: [601972](#)

Gene Ontology: [Hyperlink](#)

Gene Summary: The protein encoded by this gene is a member of the NR1 subfamily of nuclear hormone receptors. It is a DNA-binding protein that can bind as a monomer or as a homodimer to hormone response elements upstream of several genes to enhance the expression of those genes. The specific functions of this protein are not known, but it has been

shown to interact with NM23-2, a nucleoside diphosphate kinase involved in organogenesis and differentiation. [provided by RefSeq]

Other Designations: OTTHUMP00000021486,RAR-related orphan receptor beta,nuclear receptor RZR-beta,retinoic acid-binding receptor beta,retinoid-related orphan receptor beta

Related Disease

[Bipolar Disorder Disease Models, Animal Genetic Predisposition to Disease](#)
[Psychiatric Status Rating Scales Psychotic Disorders Schizophrenia Tobacco Use Disorder](#)

[服務條款](#) | [隱私權政策](#) | [著作及商標](#) | [網站地圖](#)

©2016 亞諾法生技股份有限公司 Abnova Corporation. 版權所有.