



SZABO SCANDIC

Part of Europa Biosite

Produktinformation



Forschungsprodukte & Biochemikalien



Zellkultur & Verbrauchsmaterial



Diagnostik & molekulare Diagnostik



Laborgeräte & Service

Weitere Information auf den folgenden Seiten!
See the following pages for more information!



Lieferung & Zahlungsart

siehe unsere [Liefer- und Versandbedingungen](#)

Zuschläge

- Mindermengenzuschlag
- Trockeneiszuschlag
- Gefahrgutzuschlag
- Expressversand

SZABO-SCANDIC HandelsgmbH

Quellenstraße 110, A-1100 Wien

T. +43(0)1 489 3961-0

F. +43(0)1 489 3961-7

mail@szabo-scandic.com

www.szabo-scandic.com

[linkedin.com/company/szaboscandic](https://www.linkedin.com/company/szaboscandic) 

RORC monoclonal antibody (M01), clone 1G7

Catalog # : H00006097-M01

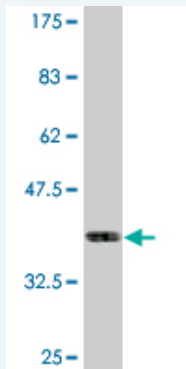
規格 : [100 ug]

[List All](#)

Specification

| | |
|-----------------------------|---|
| Product Description: | Mouse monoclonal antibody raised against a partial recombinant RORC. |
| Immunogen: | RORC (NP_005051.2, 412 a.a. ~ 517 a.a) partial recombinant protein with GST tag. MW of the GST tag alone is 26 KDa. |
| Sequence: | FSEDEIALYALVLINAHRPGLQEKRKVEQLQYNLELAFHHHLCKTHRQSI LAKLPPKGLRSLCSQHVERLQIFQHLHPIVQAAFPPPLYKELFSTETESP VGLS |
| Host: | Mouse |
| Reactivity: | Human |
| Isotype: | IgG2b Kappa |

Quality Control Testing: Antibody Reactive Against Recombinant Protein.



Western Blot detection against Immunogen (37.4 KDa) .

Storage Buffer: In 1x PBS, pH 7.4

Storage Instruction: Store at -20°C or lower. Aliquot to avoid repeated freezing and thawing.

MSDS: [Download](#)

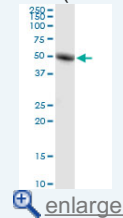
Datasheet: [Download](#)

Applications

Western Blot (Tissue lysate)

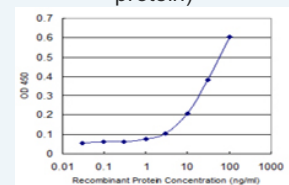
Application Image

Western Blot (Tissue lysate)



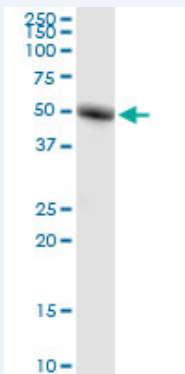
Western Blot (Recombinant protein)

Sandwich ELISA (Recombinant protein)



[enlarge](#)

ELISA



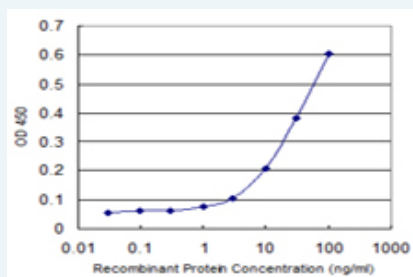
RORC monoclonal antibody (M01), clone 1G7. Western Blot analysis of RORC expression in human kidney.

 [Protocol Download](#)


Western Blot (Recombinant protein)

 [Protocol Download](#)

Sandwich ELISA (Recombinant protein)



Detection limit for recombinant GST tagged RORC is 1 ng/ml as a capture antibody.

 [Protocol Download](#)

ELISA

Gene Information

Entrez GeneID: [6097](#)

GeneBank [NM_005060](#)

Accession#:

Protein [NP_005051.2](#)

Accession#:

Gene Name: RORC

Gene Alias: MGC129539,NR1F3,RORG,RZR-GAMMA,RZRG,TOR

Gene Description: RAR-related orphan receptor C

Description:

Omim ID: [602943](#)

Gene Ontology: [Hyperlink](#)

Gene Summary: The protein encoded by this gene is a DNA-binding transcription factor and is a member of the NR1 subfamily of nuclear hormone receptors. The specific functions of this protein are not known; however, studies of a similar gene in mice have shown that this gene may be essential for lymphoid organogenesis and may play an important regulatory role in thymopoiesis. In addition, studies in mice suggest that the protein encoded by this gene may inhibit the expression of Fas ligand and IL2. Two transcript variants encoding different isoforms have been found for this gene. [provided by RefSeq]

Other OTTHUMP00000015253,RAR-related orphan receptor C, isoform
Designations: a,RAR-related orphan receptor gamma,nuclear receptor ROR-
gamma,retinoic acid-binding receptor gamma,retinoid-related orphan
receptor gamma

Related Disease

[Lymphedema Tobacco Use Disorder](#)

[服務條款](#) | [隱私權政策](#) | [著作及商標](#) | [網站地圖](#)

©2016 亞諾法生技股份有限公司 Abnova Corporation. 版權所有.