



# SZABO SCANDIC

Part of Europa Biosite

## Produktinformation



Forschungsprodukte & Biochemikalien



Zellkultur & Verbrauchsmaterial



Diagnostik & molekulare Diagnostik



Laborgeräte & Service

Weitere Information auf den folgenden Seiten!  
See the following pages for more information!



### Lieferung & Zahlungsart

siehe unsere [Liefer- und Versandbedingungen](#)

### Zuschläge

- Mindermengenzuschlag
- Trockeneiszuschlag
- Gefahrgutzuschlag
- Expressversand

### SZABO-SCANDIC HandelsgmbH

Quellenstraße 110, A-1100 Wien

T. +43(0)1 489 3961-0

F. +43(0)1 489 3961-7

[mail@szabo-scandic.com](mailto:mail@szabo-scandic.com)

[www.szabo-scandic.com](http://www.szabo-scandic.com)

[linkedin.com/company/szaboscandic](https://www.linkedin.com/company/szaboscandic) 

## RPA1 purified MaxPab mouse polyclonal antibody (B01P) MaxPab®

Catalog # : H00006117-B01P

規格 : [ 50 ug ]

[List All](#)

### Specification

**Product Description:** Mouse polyclonal antibody raised against a full-length human RPA1 protein.

**Immunogen:** RPA1 (NP\_002936.1, 1 a.a. ~ 616 a.a) full-length human protein.

**Sequence:**  
 MVGQLSEGAIAAIMQKGDNTNIKPIQVINIRPITGNSPPRYRLLMSDGLNT  
 LSSFMLATQLNPLVEEEQLSSNCVCQIHRFIVNTLKDGRRVILMELEVLK  
 SAEAVGVKIGNPVYPYNEGLGQPQVAPPAPAASPAASSRPQPQNGSSGM  
 GSTVSKAYGASKTFGKAAGPSLSHTSGGTQSKVPIASLTPYQSKWTIC  
 ARVTNKSQIRTWSNSRGEKLFSELELVDESGEIRATAFNEQVDKFFPLIE  
 VNKVYYFSKGLTKIANKQFTAVKNDYEMTFNETSVMPCEDDHLPTVQ  
 FDFTGIDDLLENKSKDSLVDIIGICKSYEDATKITVRSNNREVAKRNIYLM  
 DTSKGVVATLWGEDADKFDGSRQPVLAIKGARVSDFGGRSLSVLSSSTIIA  
 NPDIFEAYKLRGWFDAEGQALDGVVISDLKSGGVGGSNTNWKTLYEVKS  
 ENLQGQDKPDYFSSVATVWYLRKENCMYQACPTQDCNKKVIDQQNGLY  
 RCEKCDTEFPNFKYRMILSVNIADFQENQWVTCFQESAEALGQNAAYLG  
 ELKDKNEQAFEEVFQANFRSIFRVRVKVETYNDESRIKATVMDVKPVD  
 YREYGRRLVMSIRRSALM

**Host:** Mouse

**Reactivity:** Human

**Quality Control Testing:** Antibody reactive against mammalian transfected lysate.

**Storage Buffer:** In 1x PBS, pH 7.4

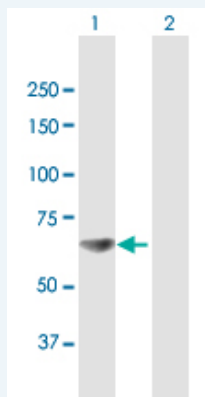
**Storage Instruction:** Store at -20°C or lower. Aliquot to avoid repeated freezing and thawing.

**MSDS:** [Download](#)

**Datasheet:** [Download](#)

### Applications

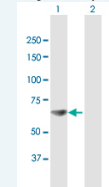
#### Western Blot (Transfected lysate)



Western Blot analysis of RPA1 expression in transfected 293T cell line ([H00006117-T01](#)) by RPA1 MaxPab polyclonal antibody.

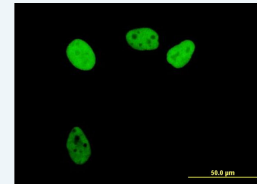
### Application Image

#### Western Blot (Transfected lysate)




[enlarge](#)

#### Immunofluorescence

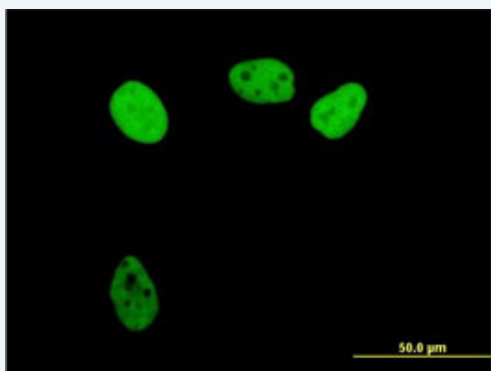



[enlarge](#)

Lane 1: RPA1 transfected lysate(67.76 KDa).  
Lane 2: Non-transfected lysate.

 [Protocol Download](#)

### Immunofluorescence



 [enlarge this image](#)

Immunofluorescence of purified MaxPab antibody to RPA1 on HeLa cell. [antibody concentration 10 ug/ml]

 [Protocol Download](#)

### Gene Information

Entrez GeneID: [6117](#)

GeneBank [NM\\_002945](#)

Accession#:

Protein [NP\\_002936.1](#)

Accession#:

Gene Name: RPA1

Gene Alias: HSSB,REPA1,RF-A,RP-A,RPA70

Gene replication protein A1, 70kDa

Description:

Omim ID: [179835](#)

Gene Ontology: [Hyperlink](#)

Other replication protein A 70 kDa DNA-binding subunit,replication protein A1

Designations: (70kD)

### Gene Pathway

[DNA replication](#) [Homologous recombination](#) [Mismatch repair](#) [Nucleotide excision repair](#)

### Related Disease

[Carcinoma, Small Cell](#) [Carcinoma, Squamous Cell](#) [Genetic Predisposition to Disease](#)  
[Head and Neck Neoplasms](#) [Leukemia, Myeloid, Chronic-Phase](#) [Lung carcinoma, small cell](#)  
[Lung Neoplasms](#) [Multiple Sclerosis](#) [Neoplasm Recurrence, Local](#)  
[Neoplasms, Second Primary](#) [Urinary Bladder Neoplasms](#)